

## Cleaning the imaging area

1



2



## Indicator Lights

The power button is illuminated blue when the Scan Station is on and ready. Following is a description of LED status:

LED	Remedy
<b>Steady blue</b>	Scan Station is on and ready to scan.
<b>Flashing blue</b>	Indicates the Scan Station is initializing from powering on or warming up and preparing to scan.
<b>Flashing or steady red</b>	Indicates a Scan Station error, such as the Scan Station cover is open.

## Supplies and Accessories

CAT No.	Description
148 4864	<i>Kodak</i> Feed Rollers
173 6115	<i>Kodak</i> Separation Module
826 9607	<i>Kodak</i> Feed Module
853 5981	<i>Kodak</i> Roller Cleaning Pads
169 0783	<i>Kodak</i> Transport Cleaning Sheets
896 5519	Staticide Wipes for <i>Kodak</i> Scanners

Kodak Alaris Inc.  
2400 Mt. Read Blvd.  
Rochester, New York 14615  
© 2014 Kodak Alaris Inc. All Rights Reserved  
A-61803 / Part 5K3799 September 2014

The Kodak trademark and trade dress are used under license from Eastman Kodak Company



## Scan Station 700 Series



## Maintenance Reference Guide

## Support Information

[www.kodakalaris.com/go/disupport](http://www.kodakalaris.com/go/disupport)

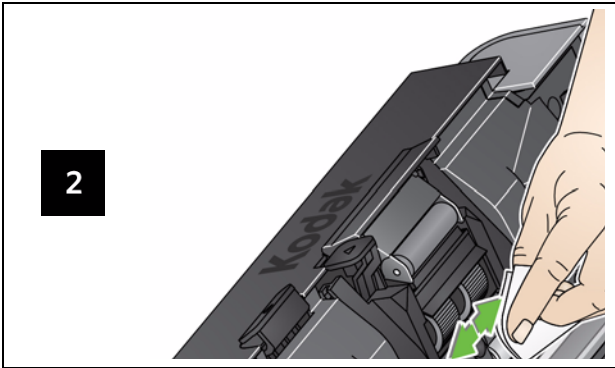
**1.800.822.1414**

(US&C only; all other regions, contact your local Kodak Alaris Support Center)

When contacting support, have the following available:

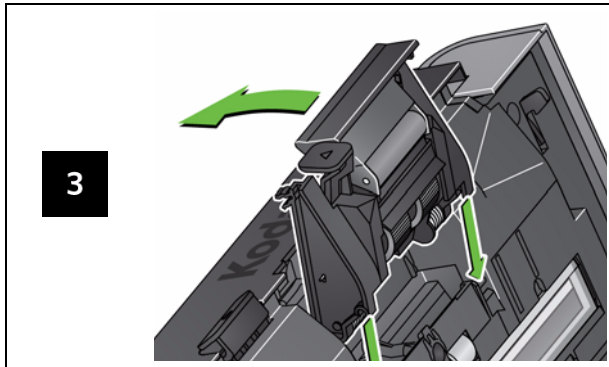
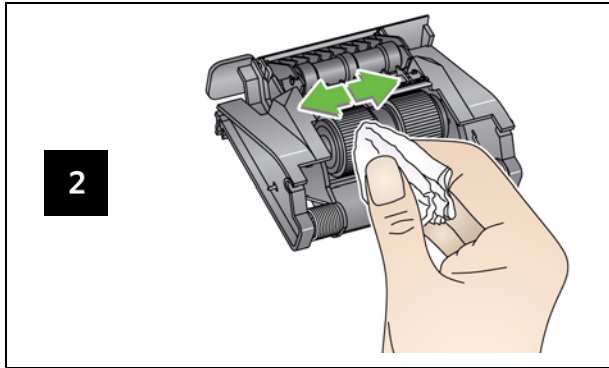
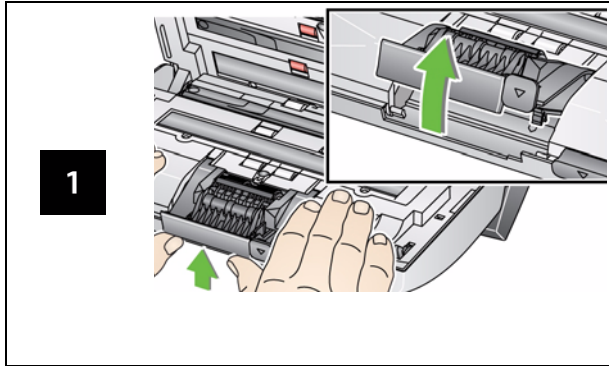
- A description of your problem
- Scan Station serial number

## Cleaning the rollers



**IMPORTANT:** The Roller Cleaning Pad contains sodium lauryl ether sulfate which can cause eye irritation. Refer to the MSDS for more information.

## Cleaning and replacing the separation module



## Cleaning and replacing the feed module

