



Kodak

A3 Flatbed Accessory
A4 Flatbed Accessory
for i2400/i2600/i2800 Scanners

User's Guide

Safety

User Precautions

- Place the scanner on a sturdy, level work surface capable of supporting 5.5 kg (12 lbs.).
- Do not install the scanner in a location subject to dust, humidity or steam. This may cause electrical shock or a fire. Only use the scanner indoors in a dry location.
- Make sure the electrical power outlet is located within 1.52 meters (5 feet) of the scanner and is easily accessible.
- Use only the power cord that was provided with the scanner. Using any other power cord may cause electrical shock and/or damage the product.
- Be sure the power cord is securely plugged into the wall outlet. Failure to do so may cause electrical shock or fire.
- Do not damage, knot, cut or modify the power cord. This may cause electrical shock or fire.
- The scanner requires a dedicated power outlet. Do not use an extension cord or power strip with the scanner.
- Use only the AC adapter that is supplied with the scanner. Do not use the scanner's AC adapter with any other product.
- Leave sufficient space around the power outlet so it can be easily unplugged in case of an emergency.
- Do not use the scanner if it becomes inordinately hot, has a strange odor, emits smoke, or makes unfamiliar noises. Immediately stop the scanner and disconnect the power cord from the power outlet. Contact Kodak Service.
- Do not disassemble or modify the scanner or the AC power adapter.
- Do not move the scanner with the power cord and interface cable attached. This may cause damage to the cord/cable. Remove the power cord from the wall outlet before moving the scanner.
- Follow the Kodak recommended cleaning procedures. Do not use air, liquid or gas spray cleaners. These cleaners displacedust, dirt and debris to other locations within the scanner, which may cause the scanner to malfunction.

Environmental information

- The *Kodak A4 Flatbed Accessory* and *Kodak A3 Flatbed Accessory* is designed to meet worldwide environmental requirements.
- Guidelines are available for the disposal of consumable items that are replaced during maintenance or service; follow local regulations or contact Kodak locally for more information.
- Disposal of this material may be regulated due to environmental considerations. For disposal or recycling information, contact your local authorities or, in the USA, visit the Electronics Industry Alliance website: www.eiae.org.

NOTE: Product contains mercury, dispose according to local, state or federal laws.

- The product packaging is recyclable.
- Material Safety Data Sheets (MSDS) for chemical products are available on the Kodak website at: www.kodak.com/go/msds. When accessing the MSDSs from the website, you will be required to provide a keyword or catalog number of the consumable you want the Material Safety Data Sheet for.

European Union



This symbol indicates that when the last user wishes to discard this product, it must be sent to appropriate facilities for recovery and recycling. Please contact your local Kodak representative or refer to www.kodak.com/go/recycle for additional information on the collection and recovery programs available for this product.

Please consult www.kodak.com/go/REACH for information about the presence of substances included on the candidate list according to article 59(1) of Regulation (EC) No. 1907/2006 (REACH).

Acoustic emission

Maschinenlärminformationsverordnung – 3, GSGV
Der arbeitsplatzbezogene Emissionswert beträgt <70 db(A).

[Machine Noise Information Ordinance — 3, GSGV
The operator-position noise emission value is <70 dB(A).]

EMC statements

United States

This equipment has been tested and found to comply with the limits for a Class A digital device pursuant to Part 15 of the FCC rules. These limits are designed to provide reasonable protection against harmful interference when the equipment is operated in a commercial environment. This equipment generates, uses, and can radiate radio frequency energy and, if not installed and used in accordance with the instruction manual, may cause harmful interference to radio communications. Operation of this equipment in a residential area is likely to cause harmful interference in which case the user will be required to correct the interference at his own expense.

Any changes or modifications not expressly approved by the party responsible for compliance could void the user's authority to operate the equipment. Where shielded interface cables have been provided with the product or specified additional components or accessories elsewhere defined to be used with the installation of the product, they must be used in order to ensure compliance with FCC regulation.

European Union

WARNING: This is a Class A product. In a domestic environment this product may cause radio interference in which case the user may be required to take adequate measures.

Japan

This is a Class A product based on the standard of the Voluntary Control Council for interference by information Technology Equipment (VCCI). If this is used in a domestic environment, radio disturbance may arise. When such trouble occurs, the user may be required to take corrective actions.

この装置は、情報処理装置等電波障害自主規制協議会（VCCI）の基準に基づくクラスA情報技術装置です。この装置を家庭環境で使用すると電波障害を引き起こすことがあります。この場合には使用者が適切な対策を講ずるよう要求されることがあります。

Taiwan

WARNING: This is a Class A product. In a domestic environment this product may cause radio interference in which case the user may be required to take adequate measures.

警告使用者：

這是甲類的資訊產品，在居住的環境中使用時，可能會造成射頻干擾，在這種情況下，使用者會被要求採取某些適當的對策。

Peoples Republic of China

WARNING: This is a Class A product. In a domestic environment this product may cause radio interference in which case the user may be required to take adequate measures.

声明，该产

此为A级产品，在生活环境中品可能会造成无线电干扰。在这种情况下，可能需要用户对其干扰采取切实可行的措施

Korean

Please note that this equipment has obtained EMC registration for commercial use. In the event that it has been mistakenly sold or purchased, please exchange it for equipment certified for home use.

이 기기는 업무용으로 전자파적합등록을 한 기기이오니 판매자
또는 사용자는 이점을 주의하시기 바라며, 만약 잘못 판매 또는
구입하였을 때에는 가정용으로 교환하시기 바랍니다.

NOTE:When this accessory is connected to the base scanner, the system is Class A.

Using the *Kodak A4/A3 Flatbed Accessory*

The *Kodak A4 Flatbed Accessory* and *Kodak A3 Flatbed Accessory* adds scanning capability for exception documents to your *Kodak Scanner*. Scanner models include: i2400, i2600 and i2800.

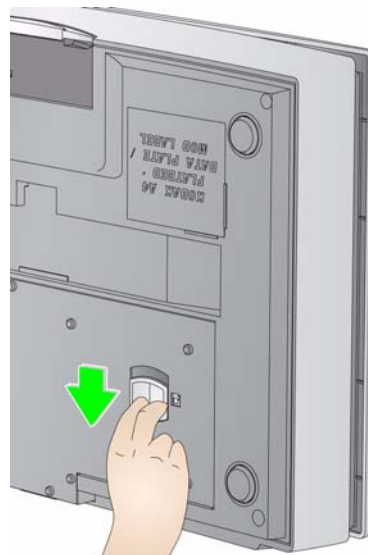
Specifications

Features	A3 Flatbed	A4 Flatbed
Height	15.9 cm (6.26 in.)	8.7 cm (3.38 in.)
Width	43.8 cm (17.24 in.)	28.6 cm (11.25 in.)
Length	71.1 cm (28 in.)	47.6 cm (18.75 in.)
Weight	10.8 kg (24 lb.)	3.7 kg (8.05 lb.)
Optical Resolution	600 dpi	1200 dpi
Accommodates document sizes up to	A3 / 297 x 420 mm (11.69 x 16.54 in.) or tabloid size (11 x 17 in.)	A4 / 210 x 297 mm (8.27 x 11.69 in.) or letter size (8.5 x 11 in.)

Unlocking the flatbed

When the *Kodak A4* or *A3 Flatbed Accessory* is shipped, the flatbed is placed in a *Locked* position. Unlock the flatbed before you install it. The Lock/Unlock lever is on the bottom of the scanner.

1. Turn the scanner over to locate the Lock/Unlock lever.
2. Move the lever into the *Unlocked* position.

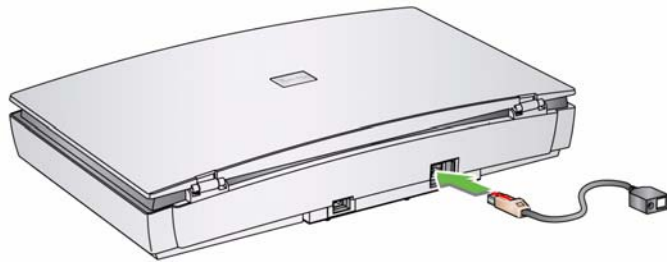


NOTE: It is not necessary to lock the flatbed accessory unless you need to ship it to another location.

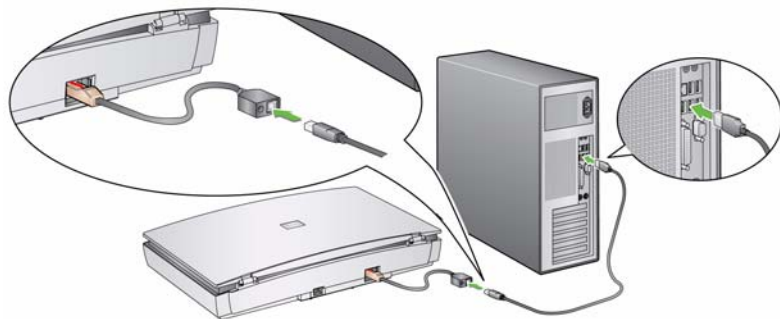
Installing the flatbed

Before you begin, be sure your *Kodak i2400/i2600/i2800* Scanner is already installed.

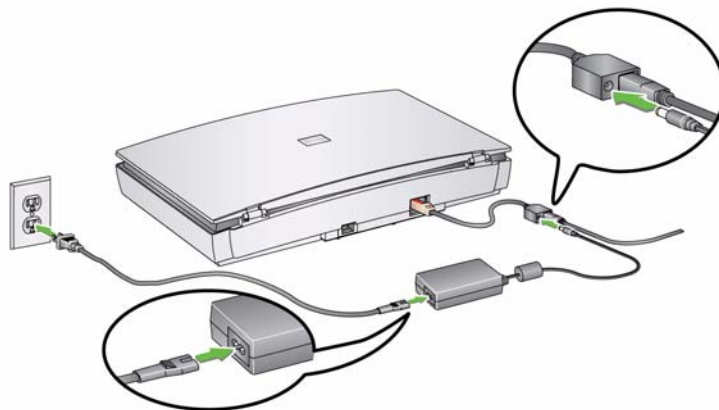
1. Attach the USB/power adapter to the *Kodak A4* or *A3 Flatbed Accessory*.



2. Insert the USB cable into the USB port on the USB/power adapter, then insert the other end of the USB connector into an available USB port on the host PC (must be USB 2.0 high-speed compatible).



3. Attach the power supply to the USB/power adapter.
4. Attach the AC power cord to the power supply and then plug the AC power cord into wall outlet.



5. When the green LED is on and steady on the flatbed, the flatbed is ready to use.
6. Verify that the green LED on the flatbed is **on** before turning on the i2400/i2600/i2800 scanner. If the scanner power was on **before** the green LED was on and steady on the flatbed, you will need to power cycle your scanner.

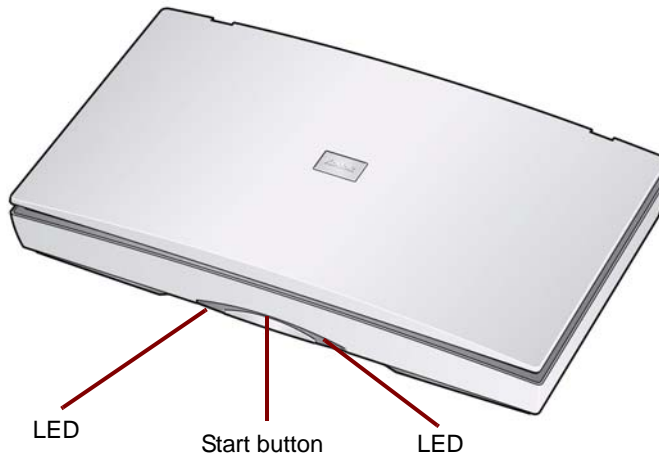
NOTE: If you need to remove the USB/power adapter, push down on the red tab to release it from its position.

LEDs and Start button

You can scan a document using the Start button on the scanner or from the host PC. When you press the Start button on the flatbed, it initiates the same action as pressing the Start button on the scanner which launches the selected application that is associated with the displayed number in the function window.

If you are scanning several exception documents using the flatbed, it may be easier to use the Start button on the flatbed to start scanning.

NOTE: Each press of the Start button results in **one** image file.



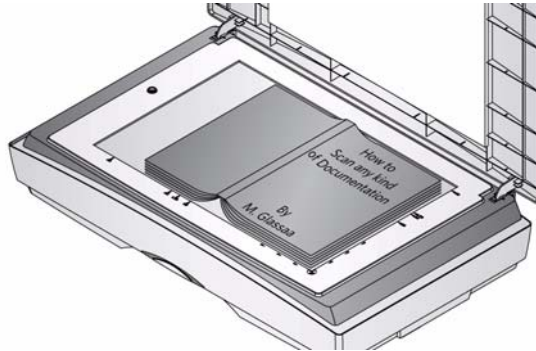
Indicator LED lights — illuminates or flashes indicating scanner status.

- **Steady green:** flatbed is ready to scan.
- **Steady red:** indicates an error.
- **Flashing green:** waiting/Energy Star mode; scanning/busy.
- **Flashing red:** flatbed failure.

Using the flatbed

Use the flatbed to scan documents that cannot be scanned using the automatic document feeder.

1. Open the flatbed cover.
2. Place the document **face down** on the glass platen.
3. Position the document in the corner aligned with the arrow.



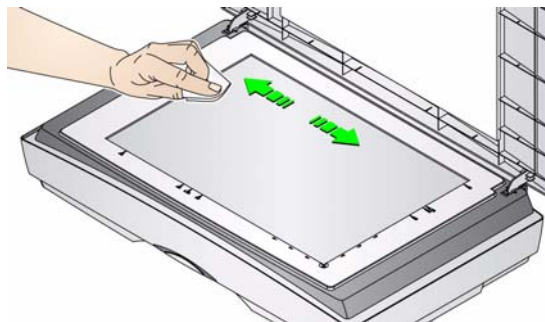
4. Close the flatbed cover.
5. Start scanning. You can scan the document using the Start button on the scanner, flatbed or host PC.

Cleaning the flatbed

The flatbed's glass platen can collect fingerprints and dust which may lessen the quality of your image. Use Staticide Wipes for *Kodak* Scanners (CAT No. 896 5519) or Brilliantize Detailer Wipes for *Kodak* Scanners (CAT No. 826 6488) to clean the glass platen.

IMPORTANT: Staticide wipes contain isopropanol which can cause eye irritation and dry skin. Wash your hands with soap and water after performing maintenance procedures. Refer to the MSDS for more information.

1. Open the flatbed cover.
2. Wipe the glass platen using a Brilliantize Detailer wipe (Step 1) or a Staticide wipe.



3. Dry the glass platen using a Brilliantize Detailer wipe (Step 2) or an almost dry Staticide wipe to remove any streaks.
4. Close the flatbed cover.

Accessories

The *Kodak* Black Background Accessory (CAT No. 863 6870) is available for use with the *Kodak* A4 Flatbed Accessory. This accessory eliminates bleed-through when scanning two-sided documents. It can also be used if you are scanning documents that are primarily white and you want a defined black border on your images.

Kodak

