

Installation Guide for *Kodak* i30/i40 Scanners

Package Contents

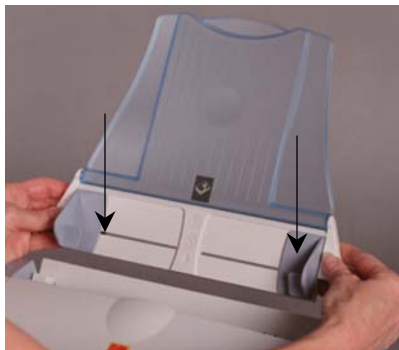
- *Kodak* i30 or i40 Scanner
- Input tray
- Output tray
- Feed module
- USB 2.0 cable
- Power supply
- Power cord bundle
- Installation and application CDs
- Registration card
- Printed User's Guide, English
- Read Me Now

NOTE: Additional instructions for the steps below can be found in the User's Guide and other supporting documentation.

1

Attaching the input tray

- Align the input tray pins with the slots.
- Press the input tray down into position until it snaps into place.



2

Attaching the output tray

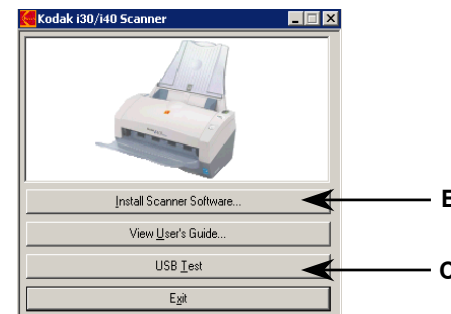
- Insert the pin on the left side of the output tray in the hole.
- Press the ribbed button on the right side of the output tray and insert the pin in the hole on the right side of the scanner.



3

Install software/check USB port

- Insert the *Kodak Scanner Installation CD* in the drive.
- Select **Install Scanner Software** and follow the on-screen instructions.



- Select **USB Test**.

4

Install USB cable

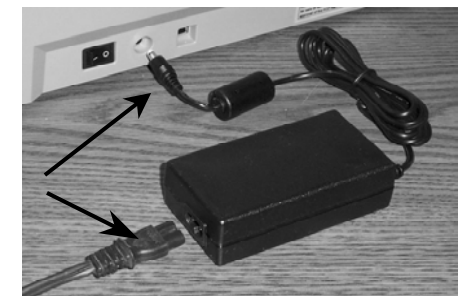
- Connect the USB cable between the scanner and the PC.



5

Install power cords

- Select the appropriate AC power cord.
- Plug the DC power connector to the scanner, and plug the AC power cord into the power adaptor.
- Plug the power adaptor plug into the wall.



6

Turn on power

- Press the power switch on the back of the scanner to turn the scanner on.



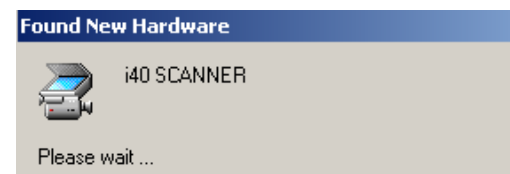
NOTE: The scanner will go through a series of self tests, the green LED indicator will flash. When it is finished and ready to scan, the indicator will stop flashing and stay lit.

If the green indicator light is not steady, repeat Step 6. Refer to the User's Guide for more information.

7

Scanner will be recognized by the software

Your operating software will now auto detect the scanner.



NOTE: Depending on the computer operating system you are using, these screens may be different. (Use your software of choice to use the scanner.)

8



Setting up a test scan

- Place a document to scan in the input tray.
- Select **Start>Programs>Kodak>Document Imaging>Scan Validation Tool**. The Scan Validation Tool dialog box will be displayed.
- Select **TWAIN** (or **ISIS**) for the Driver Types and **Kodak Scanner i30/i40** as the Driver. The Scan Validation Tool dialog box is displayed:



9

Scanning an image/verification

- If the image viewer window is not open, click one of the View  buttons.
- Click the  button. The scanned document will be displayed in the image viewer window.

If the document is scanned correctly, the installation and verification of your scanner is complete. **Congratulations!**

You may now install the third-party scanning application software you intend to use with your scanner.

If the document did not scan correctly, refer to the User's Guide for *Kodak* i30/i40 Scanners for more information.

For more information about *Kodak* Scanners and *Kodak* Capture Software visit our website.

www.kodak.com/go/docimaging

For more information about other supporting software:

Readiris Pro CE 8

www.irisusa.com/support/readiris/index.html

Capio by Kofax

www.kofax.com/support/IP/Capio/1/index.asp

EASTMAN KODAK COMPANY
343 State Street
Rochester, NY 14650 U.S.A
A-61525 May 2006
©Eastman Kodak Company 2006
Kodak is a trademark

