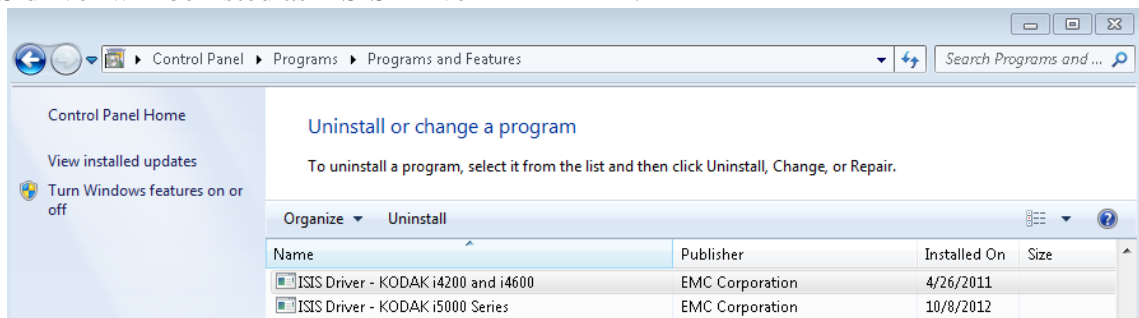


Creating an ISIS Debug log.

There are two levels of ISIS Debug logging. For the most detailed level the ISIS driver must be installed with the “idebug” option enabled. This option cannot be enabled by using the Kodak “InstallSoftwareXXXX.exe” installers. An ISIS standalone installer will be provided if that option is needed.

1) {optional} Install the ISIS driver in “idebug” mode.

1. Close any open scanning applications.
2. Create folders “C:\ISISdebug\CD” on the scanner host PC.
3. Move the provided ISIS standalone installer to the scanner host PC into the “C:\ISISdebug\CD” folder and unzip the package.
4. Uninstall the current ISIS driver using the Windows XP Add Remove Programs option in the Control Panel or the Windows 7 Control Panel\Programs\Programs and Features\UnInstall or Change a Program. The ISIS driver will be listed as “ISIS Driver –XXXX”.



5. Open a Command (CMD) windows.
 - From START>RUN type “CMD”. If there is no Run option then you can add it by right clicking on START then choosing Properties/Start Menu/Customize and check the “Run Command” box and close.
6. In the CMD window, type “cd C:\ISISdebug\CD”, to move into the standalone ISIS driver install directory.
7. In the CMD window, start the debug version installation by typing “setup.exe -idebug”, followed by the <enter> key
8. Follow the prompts to complete the installation and close the Command Window.

Creating an ISIS Debug log.

2) Update the SETSCAN.INI file

1) Navigate to the setscan.ini file:

Windows XP:

- Windows XP: “C:\Documents & Settings\{User}\Application Data\ISIS Drivers”.
- Open the setscan.ini file.

Windows 7 & Vista:

- Windows 7 & Vista: “C:\Users\{User}\AppData\Roaming\ISIS Drivers”.
- Create a folder on the “C” drive and name it debug
- Open the setscan.ini file.

2) Update the Setscan.ini file:

- If there is already a [Scanner] section then update that section; otherwise create a [Scanner] section at the bottom of the file.
- Note: the brackets around “Scanner” are squared.

[Scanner]

SDKDebug=-1

SDKDebugFile=C:\ISISdebug\dbg.log

SDKDebugAppend =1

NOTES:

SDKDebug=-1

-input a minus sign after the equal sign.

SDKDebugFile=C:\ISISdebug\dbg.log

-the filename and path can be different but it is very important that the directory already exist. If the directory does not exist or is not accessible by the user the log will not be created.

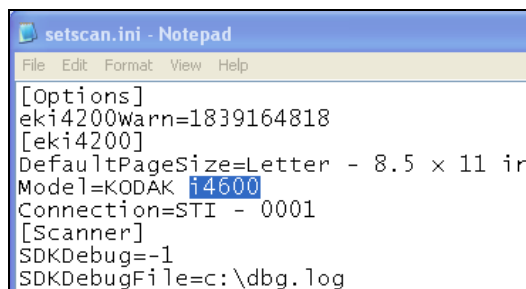
SDKDebugAppend =1

-this line is optional. If this line is present the ISIS log file will

3) Create the debug folder (if it does not already exist).

- Create the “C:\ISISdebug\” folder as noted in the step above. It is always best to create a folder off the root of the C: driver as some Operating Systems can restrict writing to the root of C:\.

4) Save and close the setscan.ini file.

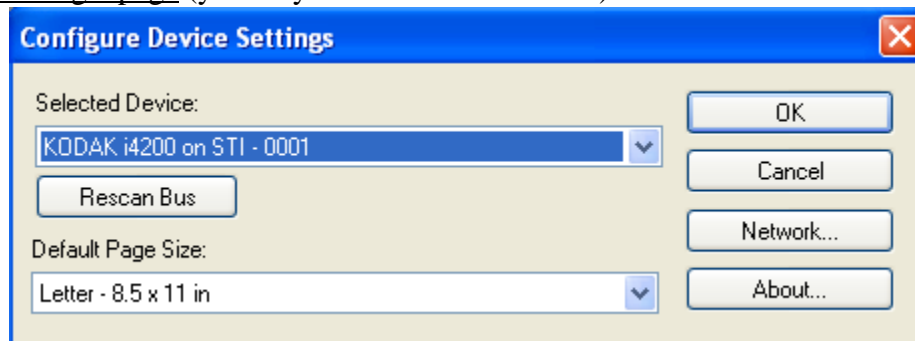


```
setscan.ini - Notepad
File Edit Format View Help
[Options]
eki4200warn=1839164818
[eki4200]
DefaultPageSize=Letter - 8.5 x 11 in
Model=KODAK i4600
Connection=STI - 0001
[Scanner]
SDKDebug=-1
SDKDebugFile=c:\dbg.log
```

Creating an ISIS Debug log.

3) Verify Debugging is Enabled

- 1) Open SVT and scan a single page (you may have to rescan the bus).



- 2) Find and Open the dbg.log file.
 - **In Windows XP**, look in the C:\ directory for a file named: dbg.log
 - **In Win7 ,Vista & Server** look in the C:\ directory \ debug folder for a file named: dbg.log
 - Open the dbg.log file and verify there is text within the log file.
- 3) Close SVT.
- 4) Delete the dbg.log file.
- 5) Open SVT and select the ISIS driver
- 6) Verify that a new dbg.log file has been created.

Creating an ISIS Debug log.

4) Recreate the problem and save the log

- 1) Open Host Scanning Application (a new dbg.log file will be created every time if SDKDebugAppend is not used).
- 2) Recreate the problem condition that requires the debug log. Try and scan as few pages as possible to keep the logs from growing too large.
- 3) Exit host scanning application.
- 4) Move or rename the debug log to prevent it from being overwritten.
- 5) {optional} You may also be asked to collect a “Scanner” log that will provide information about processing inside the scanner. Separate instructions will be provided if this is request.
- 6) Email the dbg.log log to Kodak. (You may want to zip it to reduce the attachment size.)

Creating an ISIS Debug log.

7) Clean up.

CLEAN UP Activities:

After a good log has been collected you should disable the ISIS log collection. If SDKDebugAppend has been used the log file will grow very large over time.

1. Close the host application and power off the scanner.
2. Comment out or delete the 3 additional lines of text from the setscan.ini file. To comment out the debug lines place a semi colon in front of the lines of text in the setscan.ini file.

```
[Scanner]
;SDKDebug=-1
;SDKDebugFile
```

3. Save and close the Setscan.ini file
4. Delete the dbg.log file located in the C:\ directory.
5. Power up the scanner and open SVT with ISIS and verify that the dbg.log file is not created.

Creating an ISIS Debug log.

NOTES:

If the debug log file is not created:

- a) Close SVT and power off the scanner.
 - b) Rename SETSCAN.INI it to: setscanOLD.ini
 - c) Power up the scanner and open SVT. A new setscan.ini file will be created.
 - d) Add the last 3 lines of text to the setscan.ini file as noted above based on the operating system in use.
 - e) The main ISIS driver file has an extension of *.PXN and maybe *.PXW. These files are found in the C:\WinNT\Pixtran (or C:\Windows\Pixtran) directory. If you are having problems you can rename the scanners EKixxx.pxn and EKixxx.pwx files to EKixxx.pxn.old and EKixxx.pwx.old where xxx is the scanner model then reinstall the ISIS driver. The DEBUG version of the *.PXN file will be much larger than the non-DEBUG version.
- ISIS Debug files (eki4200.pxn and eki4200.pwx) are no longer required for the Kodak i4000 series scanners.
 - The option exists to temporarily turn off the debug in the setscan.ini file.
 - a) Place a semi colon in front of the last two lines of text in the setscan.ini file.
 - b) Save and close the setscan.ini file.

```
[Scanner]
;SDKDebug=-1
;SDKDebugFile
```