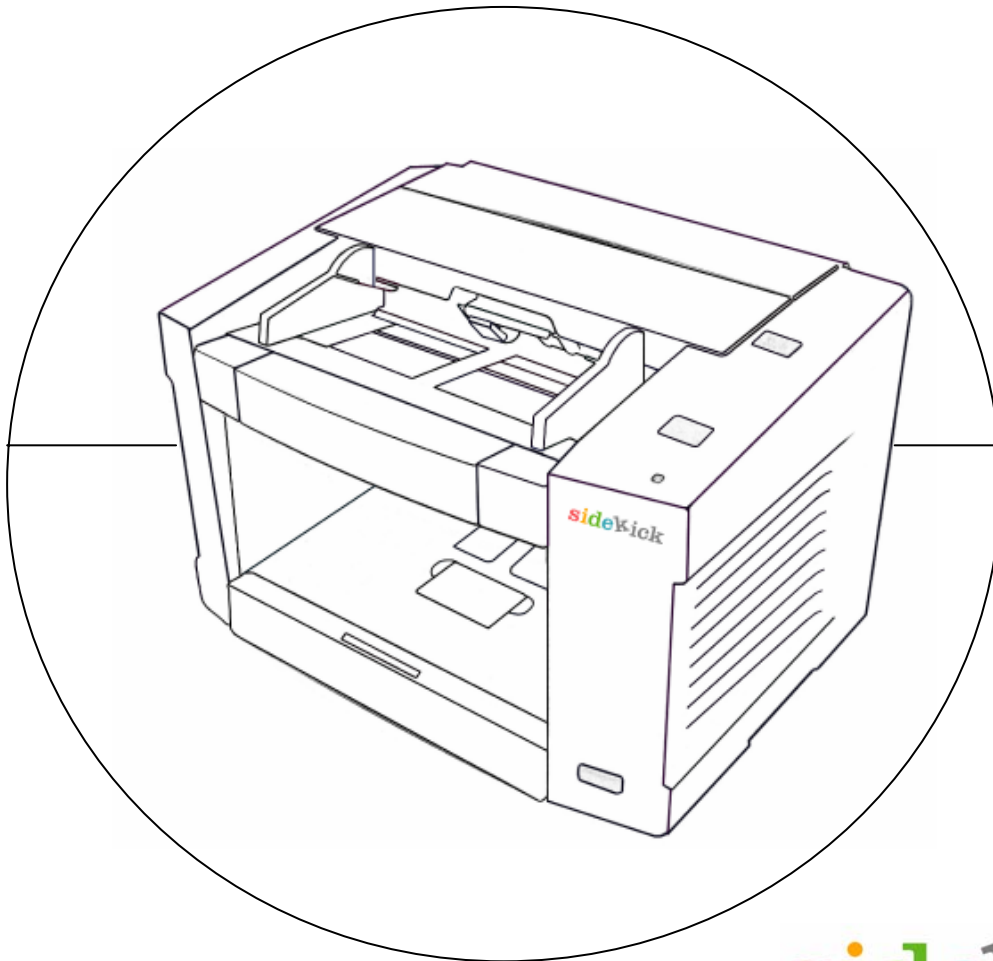




Sidekick ISIS Driver Specification



sidekick
Color Scanner

Model 1200/1400/1400u

Part Number S006964 - Rev A

Böwe Bell + Howell Scanners

Please read this manual for proper operation and maintenance of the scanner. Keep this documentation in a safe place for future reference.

Disclaimer

The instructions and descriptions contained in this document were accurate at the time of publishing. However, succeeding products and documents are subject to change without notice. Therefore, Böwe Bell + Howell Scanners, L.L.C. assumes no liability for damages incurred directly or indirectly from errors, omissions, or discrepancies between the product and this document.

©2007 Böwe Bell + Howell Scanners, L.L.C. All rights reserved. All material in this publication is confidential and is to be used by and distributed to authorized personnel of the purchaser only. All intellectual property rights remain the property of Böwe Bell + Howell Scanners, L.L.C. No part of this publication may be reproduced, distributed, modified, displayed, transmitted, stored in a retrieval system, or translated into any human or computer language, in any form or by any means, electronic, mechanical, magnetic, optical, chemical, manual, or otherwise, without the prior written permission of the copyright owner, Böwe Bell + Howell Scanners, L.L.C., 760 South Wolf Road, Wheeling, IL 60090-6232, USA.

Böwe Bell + Howell Scanners, L.L.C.
760 South Wolf Road
Wheeling, IL 60090-6232, USA

Corporate Offices: 1-847-675-7600
Sales: 1-800-SCAN-494
Multi-Lingual Technical Support: 1-800-SCAN-495
1-416-760-4499
FAX: 1-847-423-3047
TTY Line: 1-847-423-3032
Internet: www.bbhscanners.com

In Europe

The Böwe House
The Sterling Centre - Bracknell
Berkshire RG12 2PW
United Kingdom
Sales: +44-1344-462-103
Fax: +44-1344-462-101
Tech Support:
Engsupport.scanner@bowebellhowell.com

In China

No. 2 room, 601 Tower W3, Oriental Plaza
No. 1 East Chang An Ave, Dong Cheng Dist.
Beijing, 100738
China (PRC)
Telephone (86) 10 85181839
Fax +86-10-85181839

Table of Contents

1	Introduction.....	5
2	Scope	5
3	Specification	6
3.1.1	Dialog Descriptions	6
3.1.2	Hierarchy.....	7
3.1.3	Conventions	8
3.1.4	Initialization	8
3.1.5	Set Dialog	9
3.1.6	Mode	10
3.1.7	Dither	10
3.1.8	Dots per inch.....	10
3.1.9	Brightness	11
3.1.10	Contrast	11
3.1.11	Side.....	12
3.1.12	Page Size, Page Layout, Feed	12
3.1.13	Paper Source	13
3.1.14	Firmware Version.....	13
3.1.15	Ok.....	13
3.1.16	Cancel.....	13
3.1.17	Default.....	14
3.1.18	Area.....	14
3.1.19	More.....	14
3.1.20	Imprinter.....	14
3.1.21	About.....	14
3.2	More Settings Dialog	15
3.2.1	Detect Double Feed.....	16
3.2.2	Sensitivity.....	16
3.2.3	Feeding Speed.....	16
3.2.4	Image Emphasis	16
3.2.5	Deskew	17
3.2.6	Black Border Removal	17
3.2.7	Length Control	17
3.2.8	Gamma	17
3.2.9	Gamma Select	17
3.2.10	Drop Out Color.....	18
3.2.11	Manual Feed Mode.....	18
3.2.12	Manual Feed Mode Timeout.....	18
3.2.13	Ok.....	18
3.2.14	Cancel.....	18
3.2.15	Default.....	19
3.2.16	Enable	21
3.2.17	Bold Font.....	21
3.2.18	Imprinter Text.....	21
3.2.19	Printing Offset	21
3.2.20	Orientation	22
3.2.21	Start Value	22
3.2.22	Step Value	22
3.2.23	Ok.....	22
3.2.24	Cancel.....	22
3.2.25	Default.....	23
3.2.26	Help.....	23
3.3	About Dialog	24

4	API.....	25
4.1	Tags.....	25
4.1.1	Settings of image mode.....	25
4.1.2	Settings of imprinter.....	25
4.1.3	Tag List (Defaults).....	26

1 Introduction

Purpose

The purpose of this document is to define and describe the graphical user interface (GUI) and the application program interface (API) of an imaging scanner ISIS driver.

2 Scope

This document applies to the ISIS drivers developed for the following document imaging scanner(s):

- Böwe Bell and Howell 1200
- Böwe Bell and Howell 1400
- Böwe Bell+Howell 1400u

3 Specification

This driver was developed for use with the Microsoft Windows (“Windows”) family of operating systems. Its user interface (“UI”) consists of multiple standard Windows dialog boxes (“dialogs”) each of which is described in detail below.

3.1 Dialog Descriptions

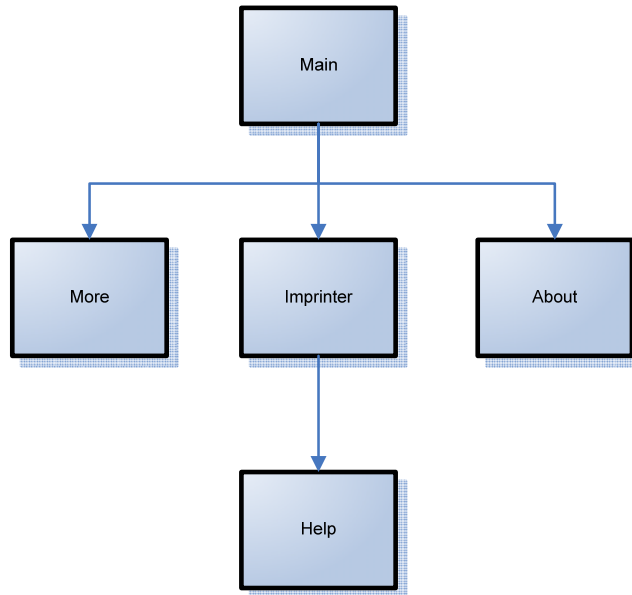
The controls used to operate the scanner are grouped into dialogs as follows:

- | | |
|---------------------------------|---|
| Set Dialog | Also known as the “main dialog”, this dialog contains controls for “standard” scanner functionality such as resolution, page size, contrast/threshold, simple/duplex, etc. This is the dialog that is displayed in response to the ISIS standard PixDrvSetDialog() command. |
| Advanced Settings Dialog | This dialog contains controls that are specific to the scanner for which it was designed. In this device, this dialog contains Drop Out, Feeding Features, Image Options and more. |
| Imprinter Dialog | This dialog contains controls that manipulate and configure the imprinter device attached to the scanner (if available). |

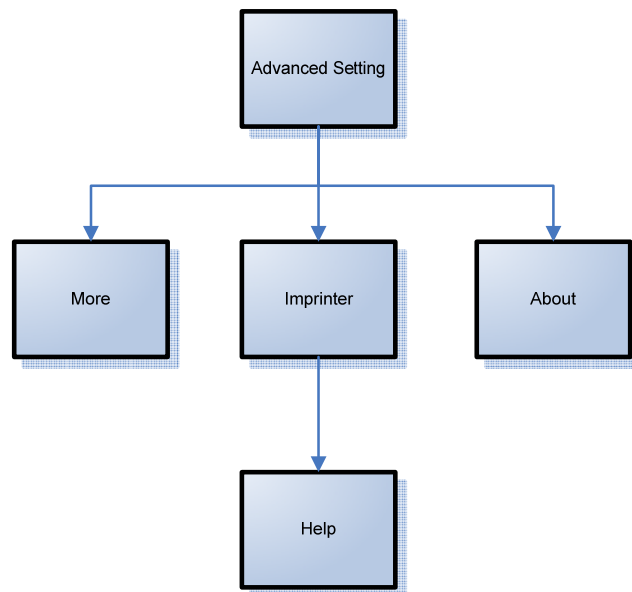
3.2 Hierarchy

There is a dialog tree employed within this driver.

- One with an entry point into the Main dialog.



- One with an entry point into the Advanced Settings dialog



3.2.1 Conventions

The specification for each control contains the following elements:

Type	The Windows control type used to represent the element.
Values	Possible values associated with this control
Persistent	Indicates whether the value is saved and restored when the host application uses the PixTools / Scan PixTagSaveFile(...) and PixTagRestoreFile(...) function calls.
Default	The default value. This is the value that is set when the Default... button is clicked in the UI or the PixTagSetDefault() API is used.
Tag Type	The type of tag associated with this element. Possible values are ISIS and Meta. An ISIS tag indicates that a TAG_... will be associated with this value, which can be controlled via the ISIS API. A Meta tag indicates that this control is used internally by the UI and is a possible modifier of another control.
Tag Value	The associated ISIS tag value if tag type is ISIS.
Dependencies	Lists the conditions in which this control is valid.
Description	A description of this control, along with possible control specific data.

3.2.2 Initialization

Model Detection

When loading, the driver shall detect the device model. This information shall be used to verify that the driver matches the device and, if a match is found, configure the ISIS tags based on feature support of that model. If the device does not match the driver, the driver shall not finalize the load.

The driver shall use the INQUIRY command to recognize the device by checking the 16-byte value stored in the Product Identification member of the inquiry data block and comparing it to the following table of known devices:

<i>Product Identification</i>	<i>Device Model</i>
B+H 1200	Bowe Bell and Howell 1200
B+H 1400	Bowe Bell and Howell 1400
B+H 1400U	Böwe Bell+Howell 1400u

NOTE: 1400u model supports Ultrasonic multifeed detection which other models do not support. 1400u model supports only USB connection. Other model support SCSI and USB connection.

ISIS driver file name

Each model has own ISIS driver file name.

<i>Product Identification</i>	<i>ISIS driver name</i>
B+H 1200	Bbh1200.pxn
B+H 1400	Bbh1400.pxn
B+H 1400U	Bbh1400u.pxn

3.3 Set Dialog

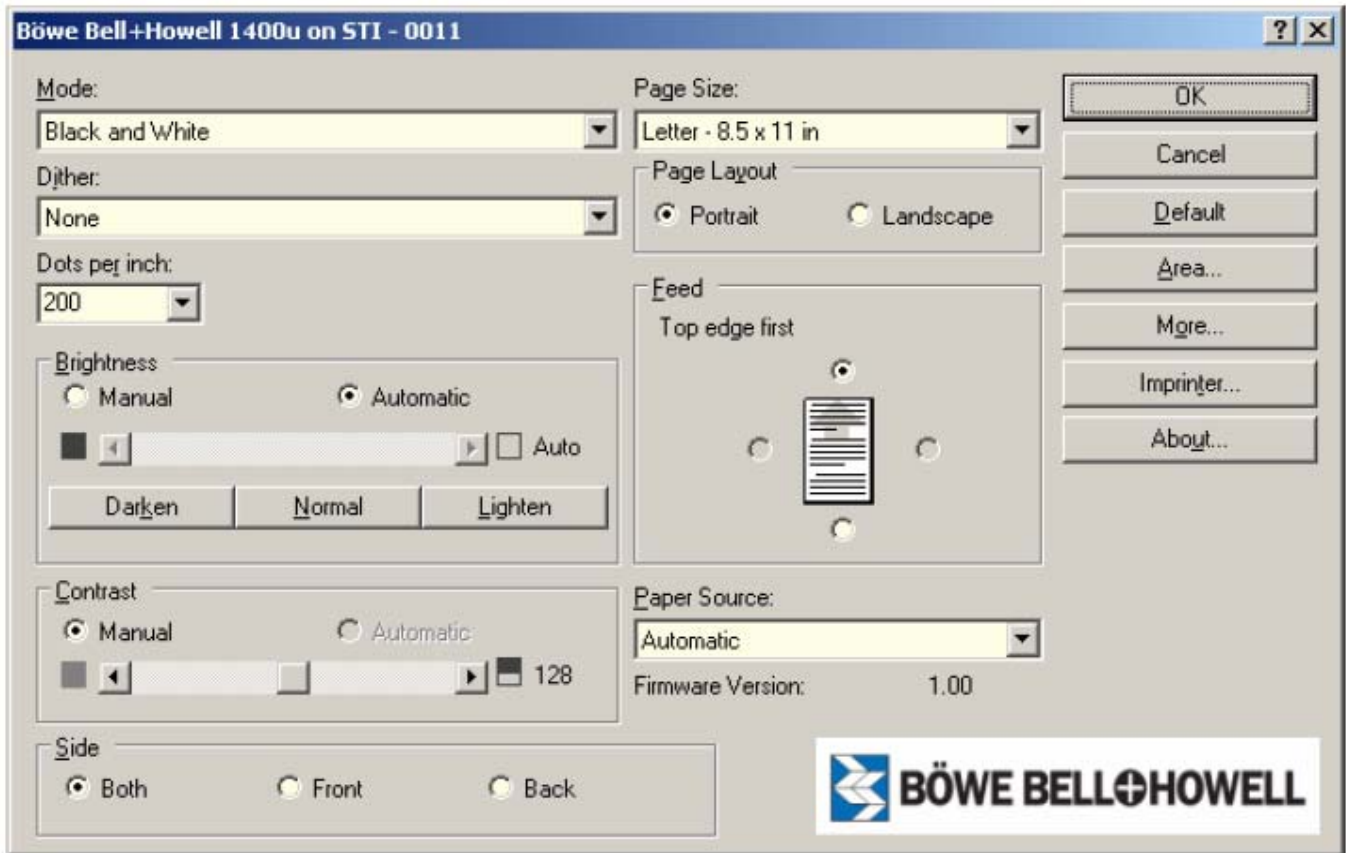


Figure 1

3.3.1 Mode

Control Type	Tag Type	Tag	Persistent
Dropdown List	Meta	N/A	Yes
Description:	Used to choose image mode to scan with either binary, grayscale, color. This setting affect to TAG_BITSPERSAMPLE and TAG_SAMPLESPERPIXEL.		
Values:	Black and White 16-level Gray 256-level Gray 24-bit Color		
Default:	Black and White		
Note:	Associated ISIS TAG detail by Mode choice: Each choice sets ISIS TAG value as follows.		
		TAG_SAMPLESPERPIXEL	TAG_BITSPERSAMPLE
	Black and White	1	1
	16-level Gray	1	4
	256-level Gray	1	8
	24-bit Color	3	8
Dependencies:	None.		

3.3.2 Dither

Control Type	Tag Type	Tag	Persistent
Dropdown List	ISIS	TAG_DITHER	Yes
Description:	Selects from available dither patterns.		
Values:	"None"		
Default:	"None"		
Dependencies:	Only available in binary mode.		

3.3.3 Dots per inch

Control Type	Tag Type	Tag	Persistent
Dropdown List	ISIS	TAG_XRESOLUTION TAG_YRESOLUTION	Yes
Description:	Sets scan resolution.		
Values:	Minimum	100 dpi	
	Maximum	600 dpi	
	Step	10 dpi	
Default:	300		
Dependencies:	None.		

3.3.4 Brightness

Control Type	Tag Type	Tag	Persistent
Radio Button	Meta	N/A	Yes
Description: Selects mode of brightness control.			
Values: 0 "Manual" 1 "Automatic"			
Default: 1 "Automatic"			
Dependencies: [Automatic] is available only when black and white is selected.			
Control Type	Tag Type	Tag	Persistent
Horizontal Scroll Bar	ISIS	TAG_BRIGHTNESS	Yes
Description: Sets threshold value. The ISIS driver maps the value set to the TAG_BRIGHTNESS tag to this threshold control.			
Values: Minimum 1 Maximum 255 Step 1			
Default: N/A			
Dependencies: When Automatic is selected, horizontal scroll bar is disabled.			
Control Type	Tag Type	Tag	Persistent
Buttons	Meta	N/A	No
Description: Used as quick-sets to adjust the brightness. Modifies TAG_BRIGHTNESS.			
Values: 205 "Lighten" 128 "Normal" 51 "Darken"			
Default: N/A			
Dependencies: None			

3.3.5 Contrast

Control Type	Tag Type	Tag	Persistent
Radio Button	Meta	N/A	Yes
Description: Selects mode of contrast control in binary mode.			
Values: 0 "Manual"			
Default: 0 "Manual"			
Dependencies: Automatic is to be permanently disabled since this device does not support auto-contrast.			
Control Type	Tag Type	Tag	Persistent
Horizontal Scroll Bar	ISIS	TAG_CONTRAST	Yes
Description: Sets contrast value.			
Values: Minimum 1 Maximum 255 Step 1			
Default: 128			
Dependencies: None.			

3.3.6 Side

Control Type	Tag Type	Tag	Persistent
Radio Button	Meta	N/A	Yes
Description:	Defines which window to apply settings to.		
Values:	Both Front Back		
Default:	Both		
Dependencies:	Following functions can be set independently by this control. [Main Dialog] Brightness, Contrast.		

3.3.7 Page Size, Page Layout, Feed

Control Type	Tag Type	Tag	Persistent
Dropdown List	ISIS	TAG_PAGESIZE	Yes
Description:	Page size. Selects from a predefined set of page sizes. Used to define the scan area.		
Values:	A4 - 210 x 297 mm A5 - 148 x 210 mm A6 - 105 x 148 mm A7 - 74 x 105 mm A8 - 52 x 74 mm B5 (ISO) - 176 x 250 mm B5 (JIS) - 182 x 257 mm B6 (ISO) - 125 x 176 mm B6 (JIS) - 128 x 182 mm B7 (ISO) - 88 x 125 mm B7 (JIS) - 91 x 128 mm B8 (ISO) - 62 x 88 mm B8 (JIS) - 64 x 91 mm Business Card - 55 x 91 mm Legal - 8.5 x 14 in Letter - 8.5 x 11 in Scanner's Maximum		
Default:	Regional dependent: Letter for US, A4 for metric		
Dependencies:	The maximum scan size is as follows. 8.5 x 25 inches. Starting position: TAG_XPOSITION, TAG_YPOSITION Scan size: TAG_IMAGELENGTH, TAG_IMAGEWIDTH		
Control Type	Tag Type	Tag	Persistent
Radio Button	ISIS	TAG_DATAORIENTATION	Yes
Description:	Selects the orientation of the image after the page is scanned.		
Values:	1 TAG_DATAORIENTATION_PORT "Portrait" 2 TAG_DATAORIENTATION_LAND "Landscape"		
Default:	1 TAG_DATAORIENTATION_PORT "Portrait"		
Dependencies:	If selected page size can not be fed in the scanner, the selection will not be available.		
Control Type	Tag Type	Tag	Persistent
Radio Button	ISIS	TAG_SCANORIENTATION	Yes

Description:	This collection of radio buttons determines the orthogonal rotation of the image. Used in conjunction with the page graphic, it indicates to the user which edge of the page should be fed to achieve the orientation of the image. When any of these radio buttons are selected, the arrow contained within the page graphic shall point to the edge to be fed. Used in conjunction with TAG_DATAORIENTATION to define rotation based on the orientation of the page.		
Values:	1 TAG_SCANORIENTATION_PORT		"Top edge first"
	2 TAG_SCANORIENTATION_LAND		"Right edge first"
	3 TAG_SCANORIENTATION_180		"Bottom edge first"
	4 TAG_SCANORIENTATION_270		"Left edge first"
Default:	1 TAG_SCANORIENTATION_PORT		"Top edge first"
Dependencies:	If selected page size can not be fed in the scanner, the selection will not be available.		

3.3.8 Paper Source

Control Type	Tag Type	Tag	Persistent
Dropdown List	ISIS	TAG_SCANTYPE	Yes
Description:	Selects the scan source. Make back side cameras available for selection/configuration. Indirectly modifies TAG_SCANTYPE.		
Values:	TAG_SCANTYPE_AUTOMATIC		"Automatic"
	TAG_SCANTYPE_FEEDER		"Feeder"
	TAG_SCANTYPE_DUPLEX		"Duplex"
Default:	TAG_SCANTYPE_AUTOMATIC		"Automatic"
Dependencies:	None.		

3.3.9 Firmware Version

Control Type	Tag Type	Tag	Persistent
Static text	Meta	N/A	No
Description:	It shows scanner firmware version.		
Dependencies:	N/A		

3.3.10 Ok

Control Type	Tag Type	Tag	Persistent
Button	Meta	N/A	No
Description:	Closes the dialog and notifies caller that the user accepts the changes made within the dialog.		
Dependencies:	N/A		

3.3.11 Cancel

Control Type	Tag Type	Tag	Persistent
Button	Meta	N/A	No
Description:	Closes the dialog and notifies caller that the user does not accept the changes made within the dialog.		
Dependencies:	N/A		

3.3.12 Default

<i>Control Type</i>	<i>Tag Type</i>	<i>Tag</i>	<i>Persistent</i>
Button	Meta	N/A	No
Description: Resets all tags to their default values. This affects tags on all other dialogs.			
Dependencies: N/A.			

3.3.13 Area...

<i>Control Type</i>	<i>Tag Type</i>	<i>Tag</i>	<i>Persistent</i>
Button	Meta	N/A	No
Description: Opens the Area Dialog.			
Dependencies: N/A.			

3.3.14 More...

<i>Control Type</i>	<i>Tag Type</i>	<i>Tag</i>	<i>Persistent</i>
Button	Meta	N/A	No
Description: Opens the More Dialog.			
Dependencies: N/A.			

3.3.15 Imprinter...

<i>Control Type</i>	<i>Tag Type</i>	<i>Tag</i>	<i>Persistent</i>
Button	Meta	N/A	No
Description: Opens the Imprinter dialog box.			
Dependencies: N/A.			

3.3.16 About...

<i>Control Type</i>	<i>Tag Type</i>	<i>Tag</i>	<i>Persistent</i>
Button	Meta	N/A	No
Description: Opens the About box.			
Dependencies: N/A.			

3.4 More Settings Dialog

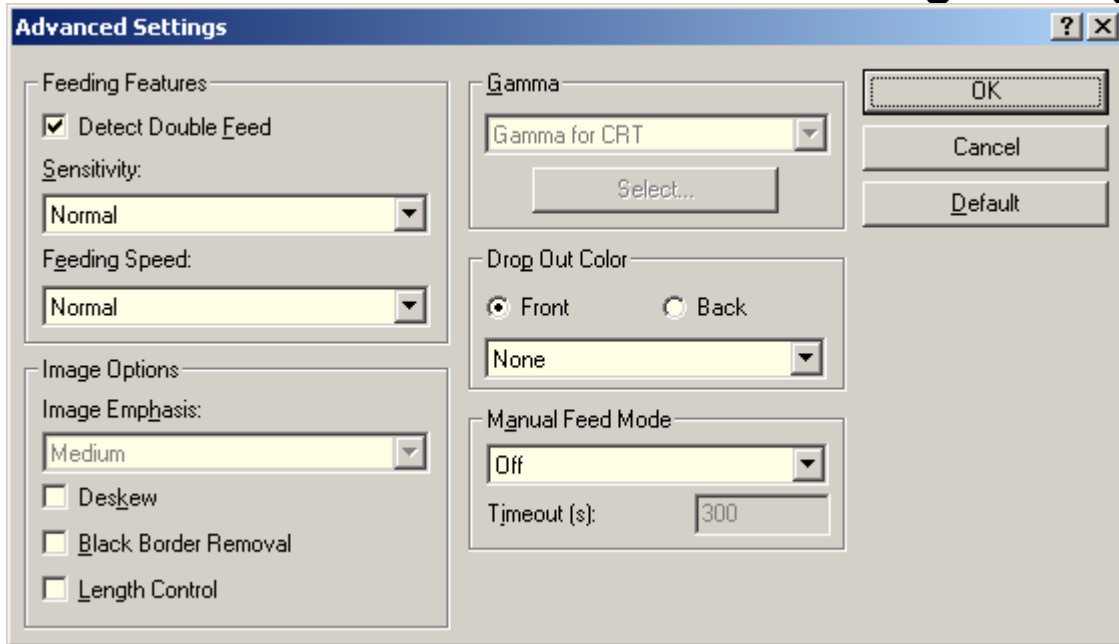


Figure 1

3.4.1 Detect Double Feed

Control Type	Tag Type	Tag	Persistent
Check Box	ISIS	TAG_FEEDER_DOUBLEDETECT	Yes
Description:	Enables or disables double feed detection.		
Values:	OFF ON		
Default:	OFF		
Dependencies:	When this control is disabled, Sensitivity is not available. Default to ON for 1400u mode, OFF to other models.		

3.4.2 Sensitivity

Control Type	Tag Type	Tag	Persistent
Dropdown List	ISIS	TAG_FEEDER_DOUBLEDETECT_SENSITIVITY	Yes
Description:	Select ultrasonic sensitivity.		
Values:	0 TAG_FEEDER_DOUBLEDETECT_SENSITIVITY_LOW 1 TAG_FEEDER_DOUBLEDETECT_SENSITIVITY_NORMAL 2 TAG_FEEDER_DOUBLEDETECT_SENSITIVITY_HIGH		
Default:	N/A		
Dependencies:	This control is available when Detect Double Feed is enabled.		

3.4.3 Feeding Speed

Control Type	Tag Type	Tag	Persistent
Dropdown List	ISIS	TAG_SCANNINGSPEED	Yes
Description:	Select scanning speed.		
Values:	1 NORMAL 2 FAST		
Default:	1 NORMAL		
Dependencies:	This control is available when 24-bit Color is selected.		

3.4.4 Image Emphasis

Control Type	Tag Type	Tag	Persistent
Dropdown List	ISIS	TAG_EMPHASIS	Yes
Description:	Selects the image emphasis.		
Values:	None TAG_EMPHASIS_OFF Low TAG_EMPHASIS_LOW Medium TAG_EMPHASIS_MEDIUM High TAG_EMPHASIS_HIGH Smooth TAG_EMPHASIS_SMOOTH		
Default:	Medium TAG_EMPHASIS_MEDIUM		
Dependencies:	Choices available only when brightness is set to a manual value.		

3.4.5 Deskew

Control Type	Tag Type	Tag	Persistent
Check Box	ISIS	TAG_FILTER_DESKEW	Yes
Description: Enables or disables deskew.			
Values: OFF TAG_FILTER_DESKEW_OFF ON TAG_FILTER_DESKEW_NORMAL			
Default: OFF TAG_FILTER_DESKEW_OFF			
Dependencies: This control is available only when black and white is selected.			

3.4.6 Black Border Removal

Control Type	Tag Type	Tag	Persistent
Check Box	ISIS	TAG_DETECTPAGESIZE	Yes
Description: Enables or disables black border removal.			
Values: OFF Unchecked ON Checked			
Default: OFF Unchecked			
Dependencies: This control is available only when black and white is selected.			

3.4.7 Length Control

Control Type	Tag Type	Tag	Persistent
Check Box	ISIS	TAG_DETECTPAGELENGTH	Yes
Description: When enabled, detects the length of the page.			
Values: OFF Unchecked ON Checked			
Default: OFF Unchecked			
Dependencies: N/A.			

3.4.8 Gamma

Control Type	Tag Type	Tag	Persistent
Dropdown List	ISIS	TAG_GAMMA	Yes
Description: Selects the gamma table.			
Values: Normal TAG_GAMMA_NORMAL Gamma for CRT TAG_GAMMA_CRT User Download TAG_GAMMA_DOWNLOAD1			
Default: Normal TAG_GAMMA_NORMAL			
Dependencies: Choices only available when not scanning binary.			

3.4.9 Gamma Select

Control Type	Tag Type	Tag	Persistent
Button	Meta	N/A	No
Description: Selects the gamma table to download to the scanner.			
Values:			
Default:			
Dependencies: Only available when Gamma is set to User Download.			

3.4.10 Drop Out Color

Control Type	Tag Type	Tag	Persistent
Group box w/Radio, Dropdown	ISIS	TAG_DROPOUT	Yes
Description: Sets up the dropout color for front and back sides.			
Values: None TAG_DROPOUT_NONE Green TAG_DROPOUT_GREEN Red TAG_DROPOUT_RED Blue TAG_DROPOUT_BLUE			
Default: TAG_DROPOUT_NONE – None			
Dependencies: This control is not available when color is selected.			

3.4.11 Manual Feed Mode

Control Type	Tag Type	Tag	Persistent
Dropdown List	ISIS	TAG_MANUALFEED	Yes
Description: Selects the manual feed mode.			
Values: OFF TAG_MANUALFEED_OFF Start Button TAG_MANUALFEED_BUTTON ON TAG_MANUALFEED_ON			
Default: OFF TAG_MANUALFEED_OFF			
Dependencies: This control disables Timeout control when OFF is selected.			

3.4.12 Manual Feed Mode Timeout

Control Type	Tag Type	Tag	Persistent
Edit Field	ISIS	TAG_MANUALTIMEOUT	Yes
Description: Selects the timeout value for the manual feed mode, measured in seconds.			
Values: 1 – 300 seconds.			
Default: 300 seconds.			
Dependencies: Only available when Manual Timeout is enabled (not Off).			

3.4.13 Ok

Control Type	Tag Type	Tag	Persistent
Button	Meta	N/A	No
Description: Closes the dialog and notifies caller that the user accepts the changes made within the dialog.			
Dependencies: N/A			

3.4.14 Cancel

Control Type	Tag Type	Tag	Persistent
Button	Meta	N/A	No
Description: Closes the dialog and notifies caller that the user does not accept the changes made within the dialog.			
Dependencies: N/A			

3.4.15 Default

<i>Control Type</i>	<i>Tag Type</i>	<i>Tag</i>	<i>Persistent</i>
Button	Meta	N/A	No
Description: Resets all the tags on this dialog to their default values.			
Dependencies: N/A			

3.5 Imprinter

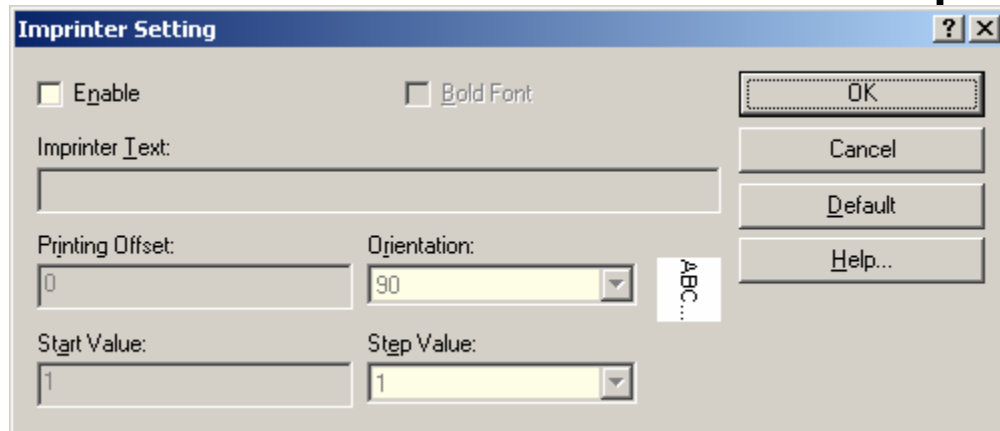


Figure 3

3.5.1 Enable

<i>Control Type</i>	<i>Tag Type</i>	<i>Tag</i>	<i>Persistent</i>
Check Box	Meta	N/A	No
Description:	Enable Endorser functions.		
Values:	0	"OFF"	
	1	"ON"	
Default:	0	"OFF"	
Dependencies:	The endorser will only be active if there is text in "Imprinter Text"		

3.5.2 Bold Font

<i>Control Type</i>	<i>Tag Type</i>	<i>Tag</i>	<i>Persistent</i>
Checkbox	ISIS	TAG_ENDORSER_FONT	Yes
Description:	Enables or disables a bold font.		
Values:	Normal Font	Unchecked	
	Bold Font	Checked	
Default:	Normal Font	Unchecked	
Dependencies:	N/A.		

3.5.3 Imprinter Text

<i>Control Type</i>	<i>Tag Type</i>	<i>Tag</i>	<i>Persistent</i>
Edit	ISIS	TAG_ENDORSER_STRING	Yes
Description:	Defines the text to imprint on each page. An incremental counter can be printed using a '#' in the text. The date and time can also be printed. See the Imprinter Help dialog for a more complete explanation.		
Values:	Any text with the following limits. The text can only be 72 characters long. All characters must have a value between 0x20 and 0x5f or between 0x61 and 0x7e.		
Default:	""		
Dependencies:	N/A.		

3.5.4 Printing Offset

<i>Control Type</i>	<i>Tag Type</i>	<i>Tag</i>	<i>Persistent</i>
Edit	ISIS	TAG_ENDORSER_YOFFSET	Yes
Description:	Sets the offset from the top of the page for the start of the endorser text. To calculate the actual offset, multiply by 2.38mm and then add 10mm if the Orientation is 90 or 270 or multiply by 3.44mm and then add 10mm if the Orientation is 0 or 180.		
Values:	0 – 99		
Default:	0		
Dependencies:	N/A.		

3.5.5 Orientation

Control Type	Tag Type	Tag	Persistent
Dropdown List	ISIS	TAG_ENDORSER_ORIENTATION	Yes
Description: Selects the orientation of the characters. See the icon on the dialog for a sample.			
Values:			
	0	TAG_ENDORSER_ORIENTATION_PORT	
	90	TAG_ENDORSER_ORIENTATION_LAND	
	180	TAG_ENDORSER_ORIENTATION_180	
	270	TAG_ENDORSER_ORIENTATION_270	
Default: 90 TAG_ENDORSER_ORIENTATION_LAND			
Dependencies: N/A.			

3.5.6 Start Value

Control Type	Tag Type	Tag	Persistent
Edit	ISIS	TAG_ENDORSER_INCSTART	Yes
Description: Sets the starting value for an incremental counter.			
Values: 0 – 9999999			
Default: 0			
Dependencies: The start value is only used if there is a '#' in the Imprinter Text.			

3.5.7 Step Value

Control Type	Tag Type	Tag	Persistent
Dropdown List	ISIS	TAG_ENDORSER_INCSTEP	Yes
Description: Sets the increment value for a counter. The value of the counter will be increased by this number for each page.			
Values: 1 – 9			
Default: 1			
Dependencies: The start value is only used if there is a '#' in the Imprinter Text.			

3.5.8 Ok

Control Type	Tag Type	Tag	Persistent
Button	Meta	N/A	No
Description: Closes the dialog and notifies caller that the user accepts the changes made within the dialog.			
Dependencies: N/A			

3.5.9 Cancel

Control Type	Tag Type	Tag	Persistent
Button	Meta	N/A	No
Description: Closes the dialog and notifies caller that the user does not accept the changes made within the dialog.			
Dependencies: N/A			


3.5.10 Default

<i>Control Type</i>	<i>Tag Type</i>	<i>Tag</i>	<i>Persistent</i>
Button	Meta	N/A	No
Description: Resets all the tags on this dialog to their default values.			
Dependencies: N/A			

3.5.11 Help...

<i>Control Type</i>	<i>Tag Type</i>	<i>Tag</i>	<i>Persistent</i>
Button	N/A	N/A	No
Description: Displays help dialog box.			
Dependencies: N/A.			

3.6 About Dialog



The image shows an 'About' dialog box for the 'bbh1400u' driver. The dialog box has a blue title bar and a light beige background. It contains the following text: 'bbh1400u Version 1.1.10611.21001', 'Böwe Bell+Howell 1400u', 'Copyright © 2006 EMC Corporation.', an 'ISIS CERTIFIED' logo, 'Created with QuickDriver Version 1.0.10610.18001', and a paragraph of legal disclaimers. An 'OK' button is at the bottom. Three callout lines point from descriptive text on the left to specific parts of the dialog box.


Displays the version of this driver

Contains certifications status of this driver. Only drivers that have been certified by Pixel Translations will contain the official certification logo.

Displays the version of QuickDriver used to develop this driver.

About

bbh1400u Version 1.1.10611.21001
Böwe Bell+Howell 1400u
Copyright © 2006 EMC Corporation.



Created with
QuickDriver Version 1.0.10610.18001

EMC[®], Captiva, and ISIS are registered trademarks, and QuickDriver is a trademark of EMC Corporation. All other trademarks used herein are the property of their respective owners.
© Copyright 2006 EMC Corporation. All rights reserved.

OK

4 API

This sections details elements that are related to the API functions of this driver.

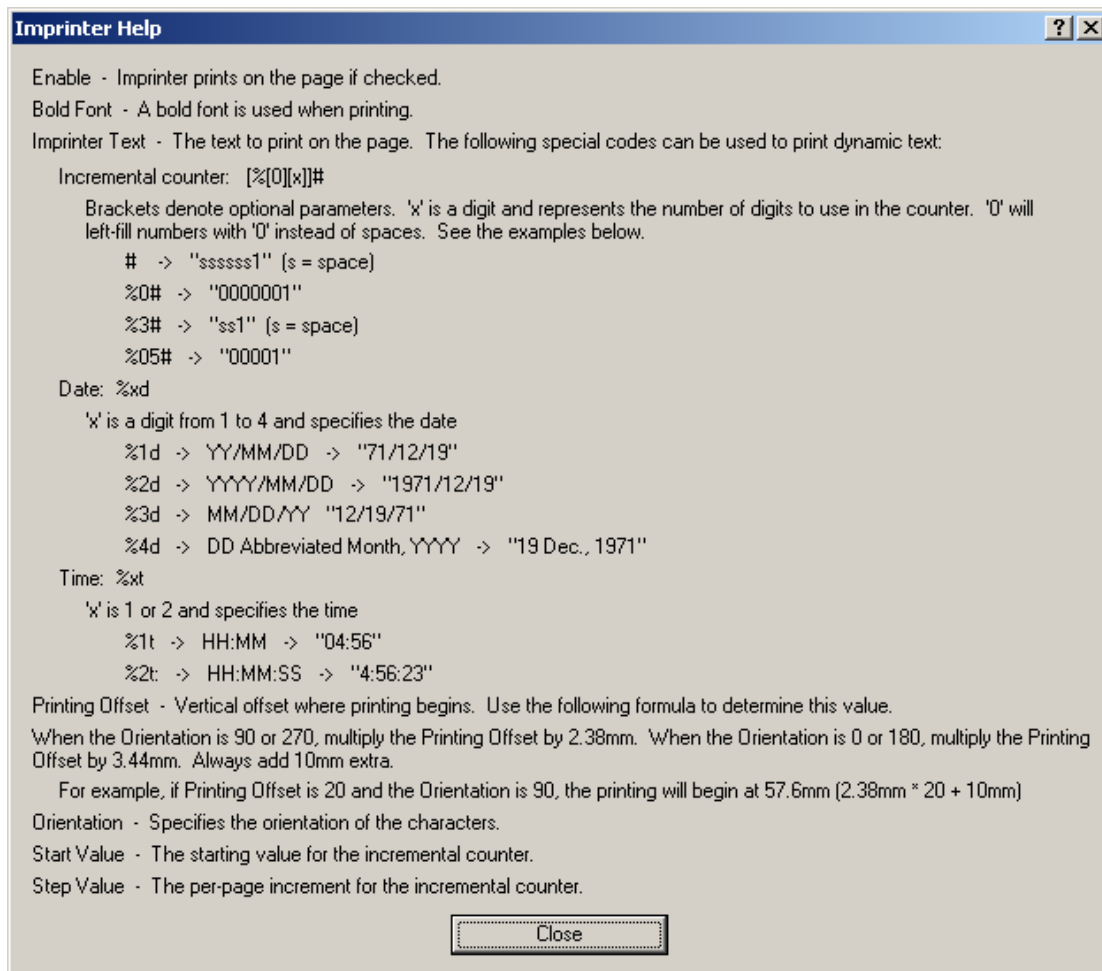
4.1 Tags

4.1.1 Settings of image mode

	TAG_SAMPLES PER PIXEL	TAG_BITS PER SAMPLE	TAG_WINDOW	Note
Black and White	1	1	0	
16-Level Gray	1	4	0	
256-Level Gray	1	8	0	
24-bit Color	3	8	0	

4.1.2 Settings of imprinter

The format string can include a combination of format specifiers (with modifiers) and messages. Here is help content ISIS driver support.



4.1.3 Tag List (Defaults)

The list below shows the default values and states of the ISIS driver API tags. This list was generated after the Default button was pressed in the UI. The value and choice list for many tags is dynamic and will differ based on dependent tags.

ISIS Driver Tag List for the Böwe Bell+Howell 1400u in Binary mode
 Böwe Bell+Howell 1400 version 1.1.10612.4001

Name: TAG_BELL Tag: 0x0508 / 1288 Type: LONG Style: LIST Count: 1 Items: [0] 0 LOW: 0 HIGH: 0 DEFAULT: 0 CURRENT: 0 ----- Name: TAG_BITSPERSAMPLE Tag: 0x0102 / 258 Type: LONG Style: LIST Count: 3 Items: [0] 1 [1] 4 [2] 8 LOW: 1 HIGH: 8 DEFAULT: 1 CURRENT: 1 ----- Name: TAG_BRIGHTNESS Tag: 0x0502 / 1282 Type: LONG Style: RANGE LOW: -3 TAG_BRIGHTNESS_AUTO HIGH: 255 STEP: 1 DEFAULT: -3 TAG_BRIGHTNESS_AUTO CURRENT: -3 TAG_BRIGHTNESS_AUTO -----	HIGH: 256 DEFAULT: 256 CURRENT: 256 ----- Name: TAG_GAMMA_TABLE4 Tag: 0x056B / 1387 Type: LONG Style: RANGE LOW: 0 HIGH: 255 STEP: 1 DEFAULT: 0 CURRENT: 0 ----- Name: TAG_IMAGELENGTH Tag: 0x0101 / 257 Type: LONG Style: RANGE LOW: 32 HIGH: 2200 STEP: 1 DEFAULT: 2200 CURRENT: 2200 ----- Name: TAG_IMAGEWIDTH Tag: 0x0100 / 256 Type: LONG Style: RANGE LOW: 32 HIGH: 1696 STEP: 16 DEFAULT: 1696 CURRENT: 1696 -----
--	---

<p>Name: TAG_BUFSIZE Tag: 0x0507 / 1287 Type: LONG Style: LIST Count: 1 Items: [0] 8192 LOW: 8192 HIGH: 8192 DEFAULT: 8192 CURRENT: 8192</p> <p>-----</p> <p>Name: TAG_COMPRESSION Tag: 0x0103 / 259 Type: LONG Style: LIST Count: 1 Items: [0] 1 TAG_COMPRESSION_NONE LOW: 1 TAG_COMPRESSION_NONE HIGH: 1 TAG_COMPRESSION_NONE DEFAULT: 1 TAG_COMPRESSION_NONE CURRENT: 1 TAG_COMPRESSION_NONE</p> <p>-----</p> <p>Name: TAG_CONFIG_1 Tag: 0x0601 / 1537 Type: ASCII Style: ANY Value: Bowe Bell and Howell 1400 on STI - 0013 DEFAULT: Bowe Bell and Howell 1400 on STI - 0013 CURRENT: Bowe Bell and Howell 1400 on STI - 0013</p> <p>-----</p> <p>Name: TAG_CONFIG_2 Tag: 0x0602 / 1538 Type: ASCII Style: LIST Count: 17 Items: [0] A4 - 210 x 297 mm [1] A5 - 148 x 210 mm [2] A6 - 105 x 148 mm [3] A7 - 74 x 105 mm [4] A8 - 52 x 74 mm [5] B5 (ISO) - 176 x 250 mm [6] B5 (JIS) - 182 x 257 mm [7] B6 (ISO) - 125 x 176 mm</p>	<p>Name: TAG_JPEGQFACTOR Tag: 0x138A / 5002 Type: LONG Style: RANGE LOW: 1 HIGH: 100 STEP: 1 DEFAULT: 75 CURRENT: 75</p> <p>-----</p> <p>Name: TAG_KFACTOR Tag: 0x050C / 1292 Type: LONG Style: LIST Count: 1 Items: [0] 4 LOW: 4 HIGH: 4 DEFAULT: 4 CURRENT: 4</p> <p>-----</p> <p>Name: TAG_LASTPAGE_ENDORSER Tag: 0x13DE / 5086 Type: ASCII Style: ANY Value: DEFAULT: CURRENT:</p> <p>-----</p> <p>Name: TAG_MANUALFEED Tag: 0x1061 / 4193 Type: LONG Style: LIST Count: 3 Items: [0] 0 TAG_MANUALFEED_OFF [1] 1 TAG_MANUALFEED_ON [2] 2 TAG_MANUALFEED_BUTTON LOW: 0 TAG_MANUALFEED_OFF HIGH: 2 TAG_MANUALFEED_BUTTON DEFAULT: 0 TAG_MANUALFEED_OFF CURRENT: 0 TAG_MANUALFEED_OFF</p> <p>-----</p>
---	---

<p>[8] B6 (JIS) - 128 x 182 mm [9] B7 (ISO) - 88 x 125 mm [10] B7 (JIS) - 91 x 128 mm [11] B8 (ISO) - 62 x 88 mm [12] B8 (JIS) - 64 x 91 mm [13] Business Card - 55 x 91 mm [14] Legal - 8.5 x 14 in [15] Letter - 8.5 x 11 in [16] Scanner's Maximum</p> <p>DEFAULT: Letter - 8.5 x 11 in CURRENT: Letter - 8.5 x 11 in</p> <p>-----</p> <p>Name: TAG_CONFIGURATIONS Tag: 0x0600 / 1536 Type: ASCII Style: LIST Count: 1 Items: [0] Select Device DEFAULT: Select Device CURRENT: Select Device</p> <p>-----</p> <p>Name: TAG_CONTEXTLINES Tag: 0x0720 / 1824 Type: LONG Style: LIST Count: 1 Items: [0] 3 LOW: 3 HIGH: 3 DEFAULT: 3 CURRENT: 3</p> <p>-----</p> <p>Name: TAG_CONTRAST Tag: 0x0501 / 1281 Type: LONG Style: RANGE LOW: 1 HIGH: 255 STEP: 1 DEFAULT: 128 CURRENT: 128</p> <p>-----</p>	<p>Name: TAG_MANUALTIMEOUT Tag: 0x06A6 / 1702 Type: LONG Style: LIST Count: 1 Items: [0] 300 LOW: 300 HIGH: 300 DEFAULT: 300 CURRENT: 300</p> <p>-----</p> <p>Name: TAG_MAXPAGES Tag: 0x0504 / 1284 Type: LONG Style: LIST Count: 1 Items: [0] 1000 LOW: 1000 HIGH: 1000 DEFAULT: 1000 CURRENT: 1000</p> <p>-----</p> <p>Name: TAG_MAXTIME Tag: 0x0505 / 1285 Type: LONG Style: LIST Count: 1 Items: [0] 3 LOW: 3 HIGH: 3 DEFAULT: 3 CURRENT: 3</p> <p>-----</p> <p>Name: TAG_MODELIMIT Tag: 0x14FB / 5371 Type: LONG Style: ANY Value: 0 DEFAULT: 0 CURRENT: 0</p> <p>-----</p>
---	---

<p>Name: TAG_CONTROLSHEET Tag: 0x1060 / 4192 Type: LONG Style: LIST Count: 1 Items: [0] 0 TAG_CONTROLSHEET_OFF LOW: 0 TAG_CONTROLSHEET_OFF HIGH: 0 TAG_CONTROLSHEET_OFF DEFAULT: 0 TAG_CONTROLSHEET_OFF CURRENT: 0 TAG_CONTROLSHEET_OFF</p> <p>-----</p> <p>Name: TAG_CUSTOMFILTER_CONFIGURE Tag: 0x1522 / 5410 Type: LONG Style: LIST Count: 2 Items: [0] 0 [1] 1 LOW: 0 HIGH: 1 DEFAULT: 0 CURRENT: 0</p> <p>-----</p> <p>Name: TAG_CUSTOMFILTER_ENABLED Tag: 0x1521 / 5409 Type: LONG Style: LIST Count: 2 Items: [0] 0 [1] 1 LOW: 0 HIGH: 1 DEFAULT: 0 CURRENT: 0</p> <p>-----</p> <p>Name: TAG_CUSTOMFILTER_PARAMETERS Tag: 0x1520 / 5408 Type: ASCII Style: ANY Value: DEFAULT: CURRENT:</p>	<p>Name: TAG_MORE_SETTINGS Tag: 0x0512 / 1298 Type: LONG Style: LIST Count: 1 Items: [0] 1 LOW: 1 HIGH: 1 DEFAULT: 1 CURRENT: 1</p> <p>-----</p> <p>Name: TAG_NOPAGE_TIMEOUT Tag: 0x14F1 / 5361 Type: LONG Style: RANGE LOW: 100 HIGH: 32000 STEP: 1 DEFAULT: 250 CURRENT: 250</p> <p>-----</p> <p>Name: TAG_PAGESIZE Tag: 0x050E / 1294 Type: ASCII Style: LIST Count: 17 Items: [0] A4 - 210 x 297 mm [1] A5 - 148 x 210 mm [2] A6 - 105 x 148 mm [3] A7 - 74 x 105 mm [4] A8 - 52 x 74 mm [5] B5 (ISO) - 176 x 250 mm [6] B5 (JIS) - 182 x 257 mm [7] B6 (ISO) - 125 x 176 mm [8] B6 (JIS) - 128 x 182 mm [9] B7 (ISO) - 88 x 125 mm [10] B7 (JIS) - 91 x 128 mm [11] B8 (ISO) - 62 x 88 mm [12] B8 (JIS) - 64 x 91 mm [13] Business Card - 55 x 91 mm [14] Legal - 8.5 x 14 in [15] Letter - 8.5 x 11 in [16] Scanner's Maximum</p>
---	---

<p>Name: TAG_DATAORIENTATION Tag: 0x0114 / 276 Type: LONG Style: LIST Count: 2 Items: [0] 1 TAG_DATAORIENTATION_PORT [1] 2 TAG_DATAORIENTATION_LAND LOW: 1 TAG_DATAORIENTATION_PORT HIGH: 2 TAG_DATAORIENTATION_LAND DEFAULT: 1 TAG_DATAORIENTATION_PORT CURRENT: 1 TAG_DATAORIENTATION_PORT</p> <p>-----</p> <p>Name: TAG_DESKEW_STOP Tag: 0x1529 / 5417 Type: LONG Style: LIST Count: 1 Items: [0] 0 TAG_DESKEW_STOP_OFF LOW: 0 TAG_DESKEW_STOP_OFF HIGH: 0 TAG_DESKEW_STOP_OFF DEFAULT: 0 TAG_DESKEW_STOP_OFF CURRENT: 0 TAG_DESKEW_STOP_OFF</p> <p>-----</p> <p>Name: TAG_DETECTJOBSEP Tag: 0x05A7 / 1447 Type: LONG Style: LIST Count: 2 Items: [0] 0 TAG_DETECTJOBSEP_OFF [1] 1 TAG_DETECTJOBSEP_NOSTOP_NOEJECT LOW: 0 TAG_DETECTJOBSEP_OFF HIGH: 1 TAG_DETECTJOBSEP_NOSTOP_NOEJECT DEFAULT: 0 TAG_DETECTJOBSEP_OFF CURRENT: 0 TAG_DETECTJOBSEP_OFF</p> <p>-----</p> <p>Name: TAG_DETECTPAGESIZE Tag: 0x057B / 1403 Type: LONG Style: LIST Count: 2 Items: [0] 0 TAG_DETECTPAGESIZE_OFF [1] 1 TAG_DETECTPAGESIZE_ON LOW: 0 TAG_DETECTPAGESIZE_OFF</p>	<p>DEFAULT: Letter - 8.5 x 11 in CURRENT: Letter - 8.5 x 11 in -----</p> <p>Name: TAG_PHOTOMETRICINTERPRETATION Tag: 0x0106 / 262 Type: LONG Style: LIST Count: 1 Items: [0] 0 TAG_PHOTOMETRIC_WHITE0 LOW: 0 TAG_PHOTOMETRIC_WHITE0 HIGH: 0 TAG_PHOTOMETRIC_WHITE0 DEFAULT: 0 TAG_PHOTOMETRIC_WHITE0 CURRENT: 0 TAG_PHOTOMETRIC_WHITE0</p> <p>-----</p> <p>Name: TAG_PLANARCONFIGURATION Tag: 0x011C / 284 Type: LONG Style: LIST Count: 1 Items: [0] 1 LOW: 1 HIGH: 1 DEFAULT: 1 CURRENT: 1</p> <p>-----</p> <p>Name: TAG_PREVIEW_CALLBACK Tag: 0x0691 / 1681 Type: LONG Style: ANY Value: 0 DEFAULT: 0 CURRENT: 0</p> <p>-----</p> <p>Name: TAG_PREVIEW_MODE Tag: 0x1523 / 5411 Type: LONG Style: LIST Count: 1 Items: [0] 0 LOW: 0 HIGH: 0 DEFAULT: 0 CURRENT: 0</p>
---	--

HIGH: 1 TAG_DETECTPAGESIZE_ON
DEFAULT: 0 TAG_DETECTPAGESIZE_OFF
CURRENT: 0 TAG_DETECTPAGESIZE_OFF

Name: TAG_DITHER
Tag: 0x0500 / 1280
Type: ASCII
Style: LIST
Count: 1
Items: [0] None
DEFAULT: None
CURRENT: None

Name: TAG_DROPOUT
Tag: 0x0582 / 1410
Type: LONG
Style: LIST
Count: 4
Items: [0] 0 TAG_DROPOUT_NONE
[1] 1 TAG_DROPOUT_RED
[2] 2 TAG_DROPOUT_GREEN
[3] 3 TAG_DROPOUT_BLUE
LOW: 0 TAG_DROPOUT_NONE
HIGH: 3 TAG_DROPOUT_BLUE
DEFAULT: 0 TAG_DROPOUT_NONE
CURRENT: 0 TAG_DROPOUT_NONE

Name: TAG_EMPHASIS
Tag: 0x0510 / 1296
Type: LONG
Style: LIST
Count: 1
Items: [0] 2 TAG_EMPHASIS_MEDIUM
LOW: 2 TAG_EMPHASIS_MEDIUM
HIGH: 2 TAG_EMPHASIS_MEDIUM
DEFAULT: 2 TAG_EMPHASIS_MEDIUM
CURRENT: 2 TAG_EMPHASIS_MEDIUM

Name: TAG_ENDORSER_FONT
Tag: 0x1068 / 4200
Type: ASCII
Style: LIST
Count: 1

Name: TAG_PREVIEW_RES
Tag: 0x14FD / 5373
Type: RATIONAL
Style: LIST
Count: 1
Items: [0] 200
LOW: 200
HIGH: 200
DEFAULT: 200
CURRENT: 200

Name: TAG_RESUNIT
Tag: 0x0128 / 296
Type: LONG
Style: LIST
Count: 4
Items: [0] 0
[1] 1 TAG_RESUNIT_NONE
[2] 2 TAG_RESUNIT_INCH
[3] 3 TAG_RESUNIT_CENTIMETER
LOW: 0
HIGH: 3 TAG_RESUNIT_CENTIMETER
DEFAULT: 1 TAG_RESUNIT_NONE
CURRENT: 1 TAG_RESUNIT_NONE

Name: TAG_SAMPLES PER PIXEL
Tag: 0x0115 / 277
Type: LONG
Style: LIST
Count: 2
Items: [0] 1
[1] 3
LOW: 1
HIGH: 3
DEFAULT: 1
CURRENT: 1

Name: TAG_SCANHEAD
Tag: 0x050D / 1293
Type: LONG
Style: LIST
Count: 2
Items: [0] 0 TAG_SCANHEAD_NO

<p>Items: [0] DEFAULT: CURRENT: ----- Name: TAG_ENDORSER_INCSTART Tag: 0x0584 / 1412 Type: LONG Style: LIST Count: 1 Items: [0] 1 LOW: 1 HIGH: 1 DEFAULT: 1 CURRENT: 1 ----- Name: TAG_ENDORSER_INCSTEP Tag: 0x1066 / 4198 Type: LONG Style: LIST Count: 1 Items: [0] 1 LOW: 1 HIGH: 1 DEFAULT: 1 CURRENT: 1 ----- Name: TAG_ENDORSER_ORIENTATION Tag: 0x1067 / 4199 Type: LONG Style: LIST Count: 1 Items: [0] 2 TAG_ENDORSER_ORIENTATION_LAND LOW: 2 TAG_ENDORSER_ORIENTATION_LAND HIGH: 2 TAG_ENDORSER_ORIENTATION_LAND DEFAULT: 2 TAG_ENDORSER_ORIENTATION_LAND CURRENT: 2 TAG_ENDORSER_ORIENTATION_LAND ----- Name: TAG_ENDORSER_PRINTTYPE Tag: 0x106C / 4204 Type: LONG Style: LIST Count: 2 Items: [0] 0 TAG_ENDORSER_PRINT_NOTHING</p>	<p>[1] 1 TAG_SCANNAHEAD_YES LOW: 0 TAG_SCANNAHEAD_NO HIGH: 1 TAG_SCANNAHEAD_YES DEFAULT: 0 TAG_SCANNAHEAD_NO CURRENT: 0 TAG_SCANNAHEAD_NO ----- Name: TAG_SCANNAHEAD_MAXPAGES Tag: 0x057C / 1404 Type: LONG Style: RANGE LOW: 0 HIGH: 1000 STEP: 1 DEFAULT: 0 CURRENT: 0 ----- Name: TAG_SCANNAHEAD_PAGES Tag: 0x0515 / 1301 Type: LONG Style: ANY Value: 0 DEFAULT: 0 CURRENT: 0 ----- Name: TAG_SCANBITSPERPIXEL Tag: 0x1524 / 5412 Type: LONG Style: LIST Count: 1 Items: [0] 1 LOW: 1 HIGH: 1 DEFAULT: 1 CURRENT: 1 ----- Name: TAG_SCANNERID Tag: 0x050A / 1290 Type: ASCII Style: ANY Value: Bowe Bell and Howell 1400 DEFAULT: Bowe Bell and Howell 1400 CURRENT: Bowe Bell and Howell 1400</p>
--	---

<p>[1] 1 TAG_ENDORSER_PRINT_CUSTOM LOW: 0 TAG_ENDORSER_PRINT_NOTHING HIGH: 1 TAG_ENDORSER_PRINT_CUSTOM DEFAULT: 0 TAG_ENDORSER_PRINT_NOTHING CURRENT: 0 TAG_ENDORSER_PRINT_NOTHING -----</p> <p>Name: TAG_ENDORSER_SIDE Tag: 0x0477 / 1143 Type: LONG Style: LIST Count: 1 Items: [0] 0 TAG_ENDORSER_SIDE_FRONT LOW: 0 TAG_ENDORSER_SIDE_FRONT HIGH: 0 TAG_ENDORSER_SIDE_FRONT DEFAULT: 0 TAG_ENDORSER_SIDE_FRONT CURRENT: 0 TAG_ENDORSER_SIDE_FRONT -----</p> <p>Name: TAG_ENDORSER_STRING Tag: 0x0583 / 1411 Type: ASCII Style: ANY Value: DEFAULT: CURRENT: -----</p> <p>Name: TAG_ENDORSER_TYPE Tag: 0x0476 / 1142 Type: LONG Style: LIST Count: 1 Items: [0] 0 TAG_ENDORSER_PRE_SCAN LOW: 0 TAG_ENDORSER_PRE_SCAN HIGH: 0 TAG_ENDORSER_PRE_SCAN DEFAULT: 0 TAG_ENDORSER_PRE_SCAN CURRENT: 0 TAG_ENDORSER_PRE_SCAN -----</p> <p>Name: TAG_ENDORSER_YOFFSET Tag: 0x0585 / 1413 Type: LONG Style: LIST Count: 1 Items: [0] 0 LOW: 0</p>	<p>Name: TAG_SCANNINGSPEED Tag: 0x0580 / 1408 Type: LONG Style: LIST Count: 1 Items: [0] 1 TAG_SCANNINGSPEED_FAST LOW: 1 TAG_SCANNINGSPEED_FAST HIGH: 1 TAG_SCANNINGSPEED_FAST DEFAULT: 1 TAG_SCANNINGSPEED_FAST CURRENT: 1 TAG_SCANNINGSPEED_FAST -----</p> <p>Name: TAG_SCANORIENTATION Tag: 0x0113 / 275 Type: LONG Style: LIST Count: 2 Items: [0] 1 TAG_SCANORIENTATION_PORT [1] 3 TAG_SCANORIENTATION_180 LOW: 1 TAG_SCANORIENTATION_PORT HIGH: 3 TAG_SCANORIENTATION_180 DEFAULT: 1 TAG_SCANORIENTATION_PORT CURRENT: 1 TAG_SCANORIENTATION_PORT -----</p> <p>Name: TAG_SCANTYPE Tag: 0x0514 / 1300 Type: LONG Style: LIST Count: 3 Items: [0] 0 TAG_SCANTYPE_AUTOMATIC [1] 3 TAG_SCANTYPE_FEEDER [2] 4 TAG_SCANTYPE_DUPLEX LOW: 0 TAG_SCANTYPE_AUTOMATIC HIGH: 4 TAG_SCANTYPE_DUPLEX DEFAULT: 0 TAG_SCANTYPE_AUTOMATIC CURRENT: 0 TAG_SCANTYPE_AUTOMATIC -----</p> <p>Name: TAG_SOFTWARE_FEATURES Tag: 0x14FF / 5375 Type: LONG Style: LIST Count: 1 Items: [0] 3 TAG_SOFTWARE_FEATURES_THRESHOLD</p>
---	--

<p>HIGH: 0 DEFAULT: 0 CURRENT: 0</p> <p>-----</p> <p>Name: TAG_ENHANCED Tag: 0x0722 / 1826 Type: LONG Style: LIST Count: 1 Items: [0] 0 LOW: 0 HIGH: 0 DEFAULT: 0 CURRENT: 0</p> <p>-----</p> <p>Name: TAG_EXTENDED_DIALOG Tag: 0x0690 / 1680 Type: LONG Style: LIST Count: 1 Items: [0] 1 LOW: 1 HIGH: 1 DEFAULT: 1 CURRENT: 1</p> <p>-----</p> <p>Name: TAG_FEEDER Tag: 0x0503 / 1283 Type: LONG Style: LIST Count: 1 Items: [0] 136904709 LOW: 136904709 HIGH: 136904709 DEFAULT: 136904709 CURRENT: 136904709</p> <p>-----</p> <p>Name: TAG_FEEDER_DOUBLEDETECT Tag: 0x13B8 / 5048 Type: LONG Style: LIST Count: 2 Items: [0] 0</p>	<p>LOW: 3 TAG_SOFTWARE_FEATURES_THRESHOLD</p> <p>HIGH: 3 TAG_SOFTWARE_FEATURES_THRESHOLD</p> <p>DEFAULT: 3 TAG_SOFTWARE_FEATURES_THRESHOLD</p> <p>CURRENT: 3 TAG_SOFTWARE_FEATURES_THRESHOLD</p> <p>-----</p> <p>Name: TAG_SPLITLONGPAPER Tag: 0x152A / 5418 Type: LONG Style: LIST Count: 2 Items: [0] 0 TAG_SPLITLONGPAPER_OFF [1] 1 TAG_SPLITLONGPAPER_ON LOW: 0 TAG_SPLITLONGPAPER_OFF HIGH: 1 TAG_SPLITLONGPAPER_ON DEFAULT: 0 TAG_SPLITLONGPAPER_OFF CURRENT: 0 TAG_SPLITLONGPAPER_OFF</p> <p>-----</p> <p>Name: TAG_STOP_MODE Tag: 0x14B1 / 5297 Type: LONG Style: LIST Count: 1 Items: [0] 0 LOW: 0 HIGH: 0 DEFAULT: 0 CURRENT: 0</p> <p>-----</p> <p>Name: TAG_SUBWINDOW Tag: 0x06AD / 1709 Type: LONG Style: LIST Count: 1 Items: [0] 0 LOW: 0 HIGH: 0 DEFAULT: 0 CURRENT: 0</p> <p>-----</p> <p>Name: TAG_SUBWINDOW_COUNT_FRONT</p>
---	--

<p>[1] 1 LOW: 0 HIGH: 1 DEFAULT: 0 CURRENT: 0 -----</p> <p>Name: TAG_FEEDEROFFSET Tag: 0x06A7 / 1703 Type: LONG Style: LIST Count: 1 Items: [0] 0 LOW: 0 HIGH: 0 DEFAULT: 0 CURRENT: 0 -----</p> <p>Name: TAG_FILLORDER Tag: 0x010A / 266 Type: LONG Style: LIST Count: 1 Items: [0] 1 TAG_FILLORDER_MSBLEFT LOW: 1 TAG_FILLORDER_MSBLEFT HIGH: 1 TAG_FILLORDER_MSBLEFT DEFAULT: 1 TAG_FILLORDER_MSBLEFT CURRENT: 1 TAG_FILLORDER_MSBLEFT -----</p> <p>Name: TAG_FILM_POLARITY Tag: 0x13DC / 5084 Type: LONG Style: LIST Count: 2 Items: [0] 0 TAG_FILM_POLARITY_NEG [1] 1 TAG_FILM_POLARITY_POS LOW: 0 TAG_FILM_POLARITY_NEG HIGH: 1 TAG_FILM_POLARITY_POS DEFAULT: 0 TAG_FILM_POLARITY_NEG CURRENT: 0 TAG_FILM_POLARITY_NEG -----</p> <p>Name: TAG_FILTER_DESKEW Tag: 0x1050 / 4176 Type: LONG</p>	<p>Tag: 0x06AF / 1711 Type: LONG Style: RANGE LOW: 0 HIGH: 0 STEP: 1 DEFAULT: 0 CURRENT: 0 -----</p> <p>Name: TAG_TWAIN_SCANMODE Tag: 0x14F3 / 5363 Type: LONG Style: LIST Count: 2 Items: [0] 0 TAG_TWAIN_SCANMODE_BATCH [1] 1 TAG_TWAIN_SCANMODE_PAGE LOW: 0 TAG_TWAIN_SCANMODE_BATCH HIGH: 1 TAG_TWAIN_SCANMODE_PAGE DEFAULT: 0 TAG_TWAIN_SCANMODE_BATCH CURRENT: 0 TAG_TWAIN_SCANMODE_BATCH -----</p> <p>Name: TAG_USEOLDAFFECTS Tag: 0x14FE / 5374 Type: LONG Style: LIST Count: 2 Items: [0] 0 TAG_USEOLDAFFECTS_OFF [1] 1 TAG_USEOLDAFFECTS_ON LOW: 0 TAG_USEOLDAFFECTS_OFF HIGH: 1 TAG_USEOLDAFFECTS_ON DEFAULT: 1 TAG_USEOLDAFFECTS_ON CURRENT: 1 TAG_USEOLDAFFECTS_ON -----</p> <p>Name: TAG_WINDOW Tag: 0x069A / 1690 Type: LONG Style: RANGE LOW: -1 HIGH: 1 STEP: 1 DEFAULT: 0 CURRENT: 0 -----</p>
--	---

<p>Style: LIST Count: 2 Items: [0] 0 TAG_FILTER_DESKEW_OFF [1] 1 TAG_FILTER_DESKEW_NORMAL LOW: 0 TAG_FILTER_DESKEW_OFF HIGH: 1 TAG_FILTER_DESKEW_NORMAL DEFAULT: 0 TAG_FILTER_DESKEW_OFF CURRENT: 0 TAG_FILTER_DESKEW_OFF -----</p> <p>Name: TAG_FILTER_DESKEW_DIRECTION Tag: 0x1074 / 4212 Type: LONG Style: LIST Count: 1 Items: [0] 0 TAG_FILTER_DESKEW_DIRECTION_HORIZONTAL LOW: 0 TAG_FILTER_DESKEW_DIRECTION_HORIZONTAL HIGH: 0 TAG_FILTER_DESKEW_DIRECTION_HORIZONTAL DEFAULT: 0 TAG_FILTER_DESKEW_DIRECTION_HORIZONTAL CURRENT: 0 TAG_FILTER_DESKEW_DIRECTION_HORIZONTAL -----</p> <p>Name: TAG_FILTER_DESKEW_FILLCOLOR Tag: 0x1070 / 4208 Type: LONG Style: LIST Count: 1 Items: [0] 0 TAG_FILTER_DESKEW_FILLCOLOR_WHITE LOW: 0 TAG_FILTER_DESKEW_FILLCOLOR_WHITE HIGH: 0 TAG_FILTER_DESKEW_FILLCOLOR_WHITE DEFAULT: 0 TAG_FILTER_DESKEW_FILLCOLOR_WHITE CURRENT: 0 TAG_FILTER_DESKEW_FILLCOLOR_WHITE -----</p> <p>Name: TAG_FILTER_SHADING Tag: 0x105C / 4188 Type: LONG Style: LIST Count: 2 Items: [0] 0 TAG_FILTER_SHADING_OFF [1] 1 TAG_FILTER_SHADING_ON</p>	<p>Name: TAG_WINDOW_COUNT_BACK Tag: 0x06AB / 1707 Type: LONG Style: RANGE LOW: 1 HIGH: 1 STEP: 1 DEFAULT: 1 CURRENT: 1 -----</p> <p>Name: TAG_WINDOW_COUNT_FRONT Tag: 0x06AC / 1708 Type: LONG Style: RANGE LOW: 1 HIGH: 1 STEP: 1 DEFAULT: 1 CURRENT: 1 -----</p> <p>Name: TAG_XPOSITION Tag: 0x011E / 286 Type: LONG Style: RANGE LOW: 0 HIGH: 1664 STEP: 16 DEFAULT: 0 CURRENT: 0 -----</p> <p>Name: TAG_XRESOLUTION Tag: 0x011A / 282 Type: RATIONAL Style: RANGE LOW: 100 HIGH: 600 STEP: 10 DEFAULT: 200 CURRENT: 200 -----</p> <p>Name: TAG_YIELDPROC Tag: 0x0513 / 1299 Type: LONG</p>
---	--

<p>LOW: 0 TAG_FILTER_SHADING_OFF HIGH: 1 TAG_FILTER_SHADING_ON DEFAULT: 0 TAG_FILTER_SHADING_OFF CURRENT: 0 TAG_FILTER_SHADING_OFF</p> <p>-----</p> <p>Name: TAG_GAMMA Tag: 0x050F / 1295 Type: LONG Style: LIST Count: 1 Items: [0] 7 TAG_GAMMA_CRT LOW: 7 TAG_GAMMA_CRT HIGH: 7 TAG_GAMMA_CRT DEFAULT: 7 TAG_GAMMA_CRT CURRENT: 7 TAG_GAMMA_CRT</p> <p>-----</p> <p>Name: TAG_GAMMA_LENGTH4 Tag: 0x055B / 1371 Type: LONG Style: LIST Count: 1 Items: [0] 256 LOW: 256</p>	<p>Style: ANY Value: 0 DEFAULT: 0 CURRENT: 0</p> <p>-----</p> <p>Name: TAG_YPOSITION Tag: 0x011F / 287 Type: LONG Style: RANGE LOW: 0 HIGH: 2168 STEP: 1 DEFAULT: 0 CURRENT: 0</p> <p>-----</p> <p>Name: TAG_YRESOLUTION Tag: 0x011B / 283 Type: RATIONAL Style: RANGE LOW: 100 HIGH: 600 STEP: 10 DEFAULT: 200 CURRENT: 200</p> <p>-----</p>
--	--