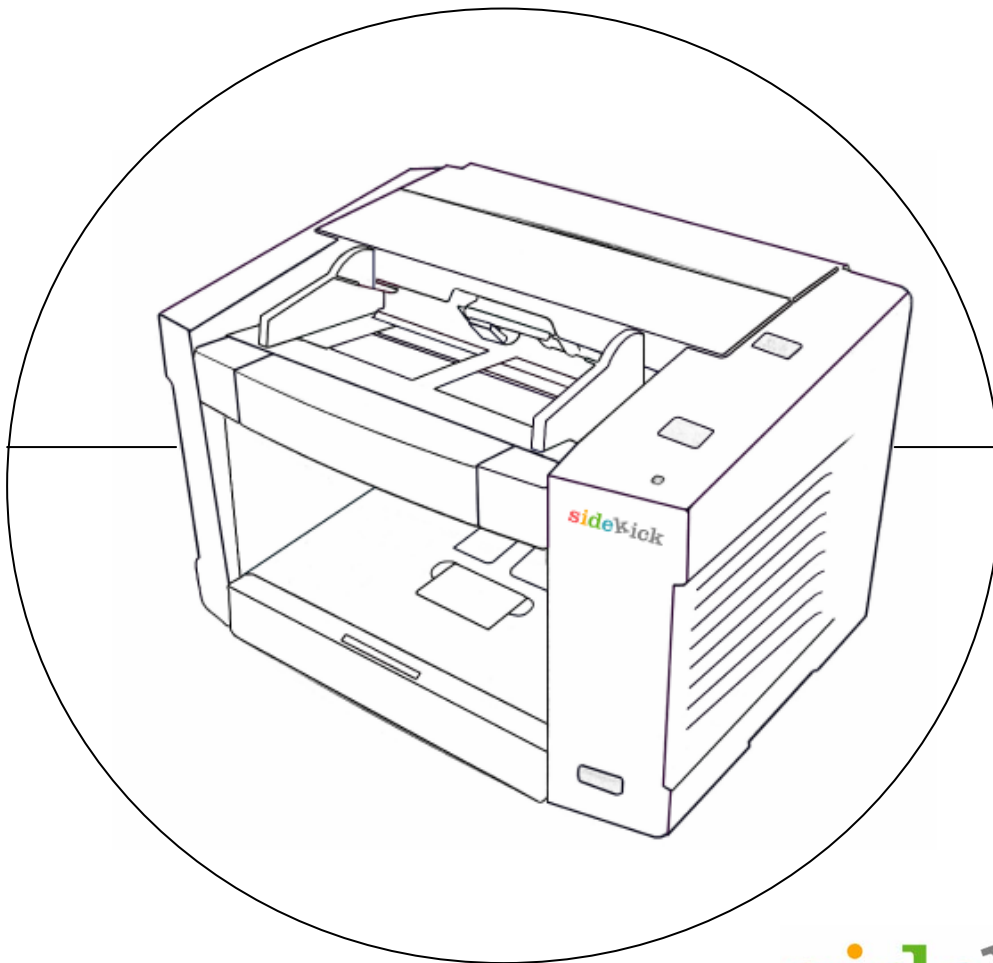




Sidekick TWAIN Driver User Interface Specification



sidekick
Color Scanner

Model 1200/1400/1400u

Part Number S006965 - Rev A

Böwe Bell + Howell Scanners

Please read this manual for proper operation and maintenance of the scanner. Keep this documentation in a safe place for future reference.

Disclaimer

The instructions and descriptions contained in this document were accurate at the time of publishing. However, succeeding products and documents are subject to change without notice. Therefore, Böwe Bell + Howell Scanners, L.L.C. assumes no liability for damages incurred directly or indirectly from errors, omissions, or discrepancies between the product and this document.

©2007 Böwe Bell + Howell Scanners, L.L.C. All rights reserved. All material in this publication is confidential and is to be used by and distributed to authorized personnel of the purchaser only. All intellectual property rights remain the property of Böwe Bell + Howell Scanners, L.L.C. No part of this publication may be reproduced, distributed, modified, displayed, transmitted, stored in a retrieval system, or translated into any human or computer language, in any form or by any means, electronic, mechanical, magnetic, optical, chemical, manual, or otherwise, without the prior written permission of the copyright owner, Böwe Bell + Howell Scanners, L.L.C., 760 South Wolf Road, Wheeling, IL 60090-6232, USA.

Böwe Bell + Howell Scanners, L.L.C.
760 South Wolf Road
Wheeling, IL 60090-6232, USA

Corporate Offices: 1-847-675-7600
Sales: 1-800-SCAN-494
Multi-Lingual Technical Support: 1-800-SCAN-495
1-416-760-4499
FAX: 1-847-423-3047
TTY Line: 1-847-423-3032
Internet: www.bbhscanners.com

In Europe

The Böwe House
The Sterling Centre - Bracknell
Berkshire RG12 2PW
United Kingdom
Sales: +44-1344-462-103
Fax: +44-1344-462-101
Tech Support:
Engsupport.scanner@bowebellhowell.com

In China

No. 2 room, 601 Tower W3, Oriental Plaza
No. 1 East Chang An Ave, Dong Cheng Dist.
Beijing, 100738
China (PRC)
Telephone (86) 10 85181839
Fax +86-10-85181839

Table of Contents

1	Introduction.....	5
2	Scope	5
3	Specification	6
3.1	Dialog Descriptions.....	6
3.2	Hierarchy	6
3.3	Initialization	7
3.3.1	Model Detection	7
3.3.2	TWAIN driver file.....	7
3.4	Main Dialog.....	8
3.4.1	Mode	9
3.4.2	Dither	9
3.4.3	Dots per inch.....	9
3.4.4	Brightness	9
3.4.5	Contrast	9
3.4.6	Paper Source	10
3.4.7	Side.....	10
3.4.8	Page Size, Page Layout, Feed	10
3.4.9	X, Y, Width, and Height.....	11
3.4.10	Pixels, Inches, and Centimeters	11
3.4.11	Snap.....	11
3.4.12	Preview	11
3.4.13	Firmware Version.....	11
3.4.14	More... ..	11
3.4.15	Imprinter... ..	11
3.4.16	Default.....	11
3.4.17	About.....	11
3.4.18	OK.....	12
3.4.19	Cancel	13
3.5	More Settings Dialog	14
3.5.1	Detect Double Feed.....	15
3.5.2	Sensitivity.....	15
3.5.3	Feeding Speed.....	15
3.5.4	Image Emphasis	15
3.5.5	Deskew	15
3.5.6	Black Border Removal	15
3.5.7	Length Control	15
3.5.8	Gamma	15
3.5.9	Gamma Select	16
3.5.10	Drop Out Color.....	16
3.5.11	Manual Feed Mode	16
3.5.12	Manual Feed Mode Timeout.....	16
3.5.13	OK.....	16
3.5.14	Cancel	16
3.5.15	Default.....	16

3.6	Imprinter.....	17
3.6.1	Enable	18
3.6.2	Bold Font.....	18
3.6.3	Imprinter Text.....	18
3.6.4	Printing Offset	18
3.6.5	Orientation	18
3.6.6	Start Value	18
3.6.7	Step Value	18
3.6.8	Ok.....	18
3.6.9	Cancel	19
3.6.10	Help.....	19
3.7	About Dialog	20
4	API.....	21
4.1	Settings of image mode.....	21
4.2	Settings of imprinter.....	21
4.3	Supported TWAIN Capabilities.....	22

1 Introduction

Purpose

The purpose of this document is to define and describe the graphical user interface (GUI) of an imaging scanner TWAIN driver.

2 Scope

This document applies to the TWAIN drivers developed for the following document imaging scanner(s):

- Böwe Bell and Howell 1200
- Böwe Bell and Howell 1400
- Böwe Bell+Howell 1400u

3 Specification

This driver was developed for use with the Microsoft Windows (“Windows”) family of operating systems. Its user interface (“UI”) consists of multiple standard Windows dialog boxes (“dialogs”) each of which is described in detail below.

3.1 Dialog Descriptions

The controls used to operate the scanner are grouped into dialogs as follows:

Main Dialog This dialog contains controls for “standard” scanner functionality such as resolution, page size, contrast/threshold, simple/duplex, etc.

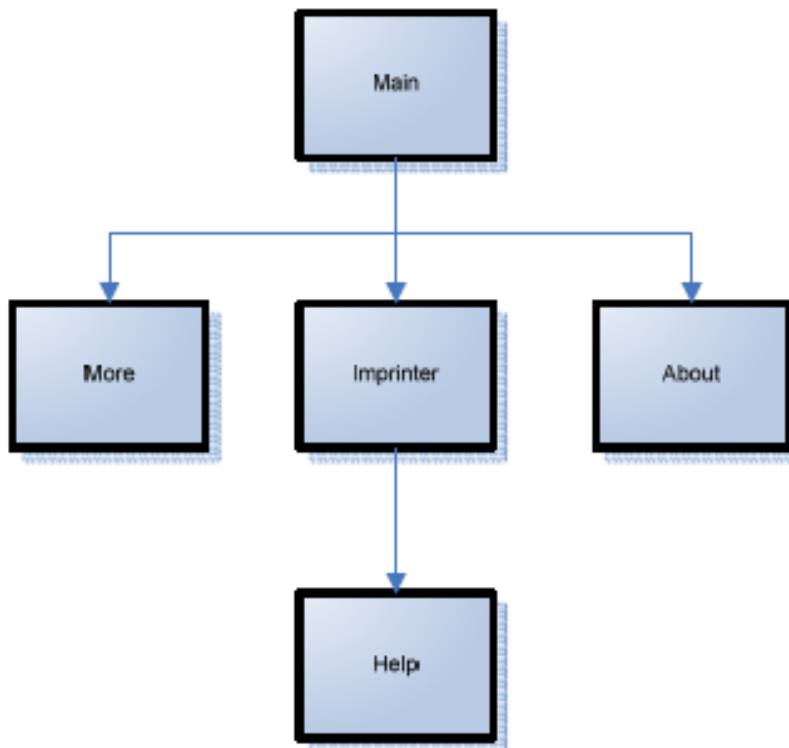
Advanced Settings Dialog This dialog contains controls that are specific to the scanner for which it was designed. In this device, this dialog contains Drop Out, Feeding Features, Image Options and more.

Imprinter Dialog This dialog contains controls that manipulate and configure the imprinter device attached to the scanner (if available).

3.2 Hierarchy

There is a dialog tree employed within this driver.

- With an entry point into the Main dialog.



3.3 Initialization

3.3.1 Model Detection

When loading, the driver shall detect the device model. This information shall be used to verify that the driver matches the device and, if a match is found, configure the driver based on feature support of that model. If the device does not match the driver, the driver shall not finalize the load. The driver shall use the INQUIRY command to recognize the device by checking the 16-byte value stored in the Product Identification member of the inquiry data block and comparing it to the following table of known devices:

Product Identification Device Model

B+H 1200 Böwe Bell and Howell 1200

B+H 1400 Böwe Bell and Howell 1400

B+H 1400U Böwe Bell+Howell 1400u

NOTE: 1400u model supports Ultrasonic multifeed detection which other models do not support. 1400u model supports only USB connection. Other model support SCSI and USB connection.

3.3.2 TWAIN driver file

Each model has a separate TWAIN Data Source File, as follows.

Product Identification TWAIN driver file

B+H 1200 BBH1200.DS

B+H 1400 BBH1400.DS

B+H 1400U BBH1400U.DS

3.4 Main Dialog

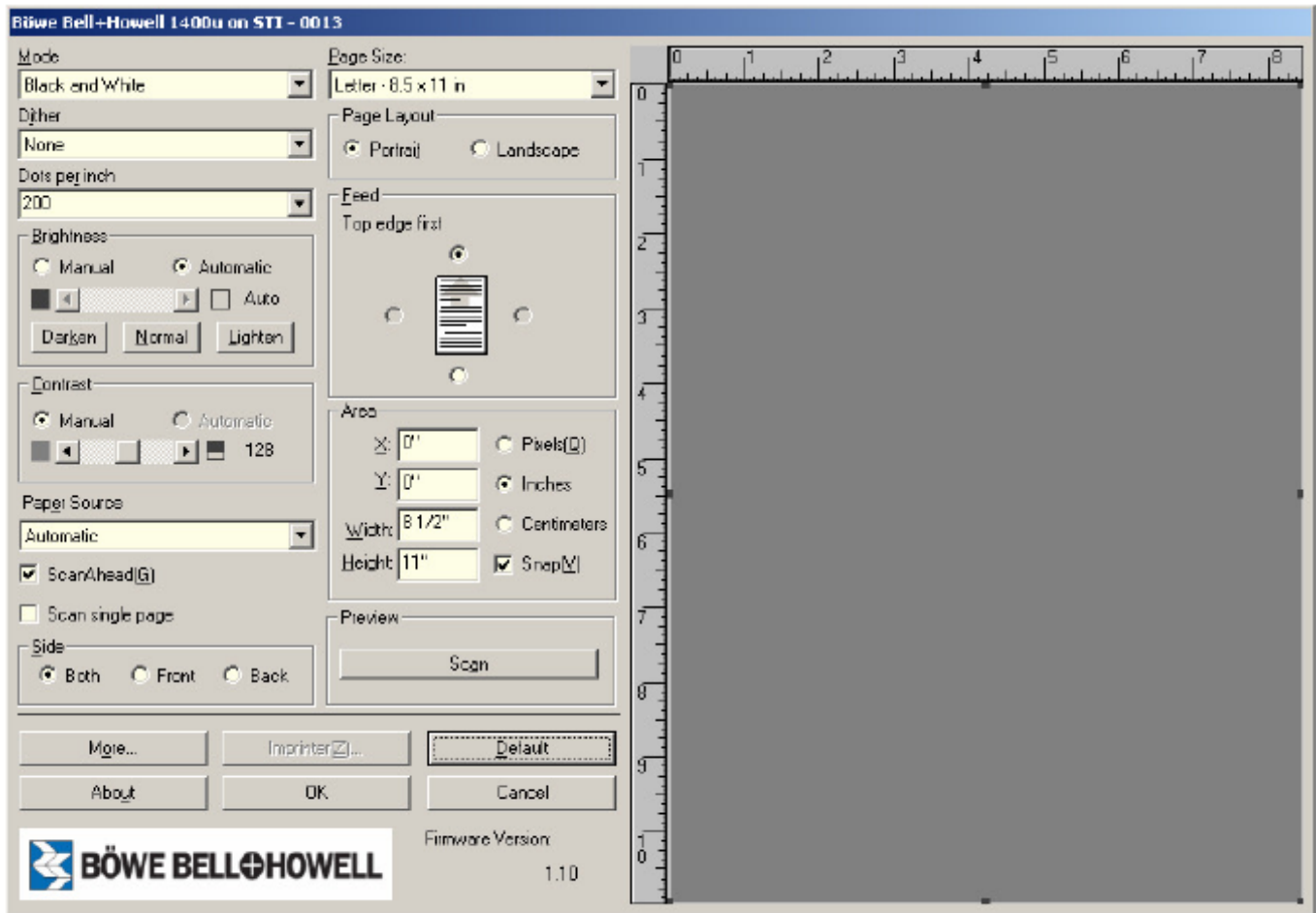


Figure 1

3.4.1 Mode

Description: Used to choose image mode to scan with either binary, grayscale or color.

Values: Black and White

16-level Gray

256-level Gray

24-bit Color

Default: Black and White

Dependencies: None.

3.4.2 Dither

Description: Selects from available dither patterns.

Values: "None"

Default: "None"

Dependencies: Only available in binary mode.

3.4.3 Dots per inch

Description: Sets scan resolution.

Values: Minimum 100 dpi

Maximum 600 dpi

Step 10 dpi

Default: 300

Dependencies: None.

3.4.4 Brightness

Description: Selects mode of brightness control.

Values: 0 "Manual"

1 "Automatic"

Default: 1 "Automatic"

Dependencies: [Automatic] is available only when black and white is selected.

Description: Sets threshold value.

Values: Minimum 1

Maximum 255

Step 1

Default: 128

Dependencies: When Automatic is selected, horizontal scroll bar is disabled.

Description: Used as quick-sets to adjust the brightness.

Values: 205 "Lighten"

128 "Normal"

51 "Darken"

Default: N/A

Dependencies: None

3.4.5 Contrast

Description: Selects mode of contrast control.

Values: 0 "Manual"

Default: 0 "Manual"

Dependencies: Automatic is to be permanently disabled since this device does not support auto-contrast.

Description: Sets contrast value.

Values: Minimum 1

Maximum 255

Step 1

Default: 128

Dependencies: None.

3.4.6 Paper Source

Description: Selects the scan source. Make back side cameras available for selection/configuration.

Values: "Automatic"
"Feeder"
"Duplex"

Default: "Automatic"

Dependencies: None.

Description: Set ScanAhead ON or OFF.

Values: ScanAhead "Off"
ScanAhead "On"

Default: ScanAhead "On"

Dependencies: None

Description: Scan single page, Sets if scan only a page or not.

Values: Scan single page "Off"
Scan single page "On"

Default: Scan single page "Off"

Dependencies: None

3.4.7 Side

Description: Defines which window to apply settings to.

Values: Both
Front
Back

Default: Both

Dependencies: Following functions can be set independently by this control.

[Main Dialog]

Brightness, Contrast.

3.4.8 Page Size, Page Layout, Feed

Description: Page size. Selects from a predefined set of page sizes. Used to define the scan area.

Values: A4 - 210 x 297 mm
A5 - 148 x 210 mm
A6 - 105 x 148 mm
A7 - 74 x 105 mm
A8 - 52 x 74 mm
B5 (ISO) - 176 x 250 mm
B5 (JIS) - 182 x 257 mm
B6 (ISO) - 125 x 176 mm
B6 (JIS) - 128 x 182 mm
B7 (ISO) - 88 x 125 mm
B7 (JIS) - 91 x 128 mm
B8 (ISO) - 62 x 88 mm
B8 (JIS) - 64 x 91 mm
Business Card - 55 x 91 mm
Legal - 8.5 x 14 in
Letter - 8.5 x 11 in
Scanner's Maximum

Default: Regional dependent: Letter for US, A4 for metric

Dependencies: The maximum scan size is as follows.

8.5 x 25 inches.

Description: Selects the orientation of the image after the page is scanned.

Values: "Portrait"
"Landscape"

Default: "Portrait"

Dependencies: If selected page size can not be fed in the scanner, the selection will not be available.

Description: This collection of radio buttons determines the orthogonal rotation of the image. Used in conjunction with the page graphic, it indicates to the user which edge of the page should be fed to achieve the orientation of the image. When any of these radio buttons are selected, the arrow contained within the page graphic shall point to the edge to be fed. Used in conjunction with Page Layout to define rotation based on the orientation of the page.

Values: "Top edge first"
"Right edge first"
"Bottom edge first"
"Left edge first"

Default: "Top edge first"

Dependencies: If selected page size can not be fed in the scanner, the selection will not be available.

3.4.9 X, Y, Width, and Height

Description: Defines the area to read from the scanner.

Values: Limits are based on the currently selected page size. Values larger than the page size will be modified to match the page size.

Default: N/A

Dependencies: None.

3.4.10 Pixels, Inches, and Centimeters

Description: Defines units for settings in Area.

Values: "Pixels"

"Inches"

"Centimeters"

Default: "Inches"

Dependencies: None.

3.4.11 Snap

Description: Enables/disables the snap feature when modifying the image size. When enabled, image coordinates are automatically set to the nearest 1/8".

Values: Cleared

Checked

Default: Checked

Dependencies: Disabled if Units is set to Pixels.

3.4.12 Preview

Description: Scanning a page and displays in the dialog.

Values: N/A

Default: N/A

Dependencies: None

3.4.13 Firmware Version

Description: It shows scanner firmware version.

Values: N/A

Default: N/A

Dependencies: None.

3.4.14 More...

Description: Opens the More Dialog.

Values: N/A

Default: N/A

Dependencies: None.

3.4.15 Imprinter...

Description: Opens the Imprinter dialog box.

Values: N/A

Default: N/A

Dependencies: Needs to attach actual imprinter kit to scanner to enable this button.

3.4.16 Default

Description: Resets all to their default values. **This affects on all other dialogs.**

Values: N/A

Default: N/A

Dependencies: None.

3.4.17 About

Description: Opens the About box.

Values: N/A

Default: N/A

Dependencies: None.

3.4.18 OK

Description: Closes the dialog and notifies caller that the user accepts the changes made within the dialog.

Values: N/A

Default: N/A

Dependencies: None.

3.4.19 Cancel

Description: Closes the dialog and notifies caller that the user does not accept the changes made within the dialog.

Values: N/A

Default: N/A

Dependencies: None.

3.5 More Settings Dialog

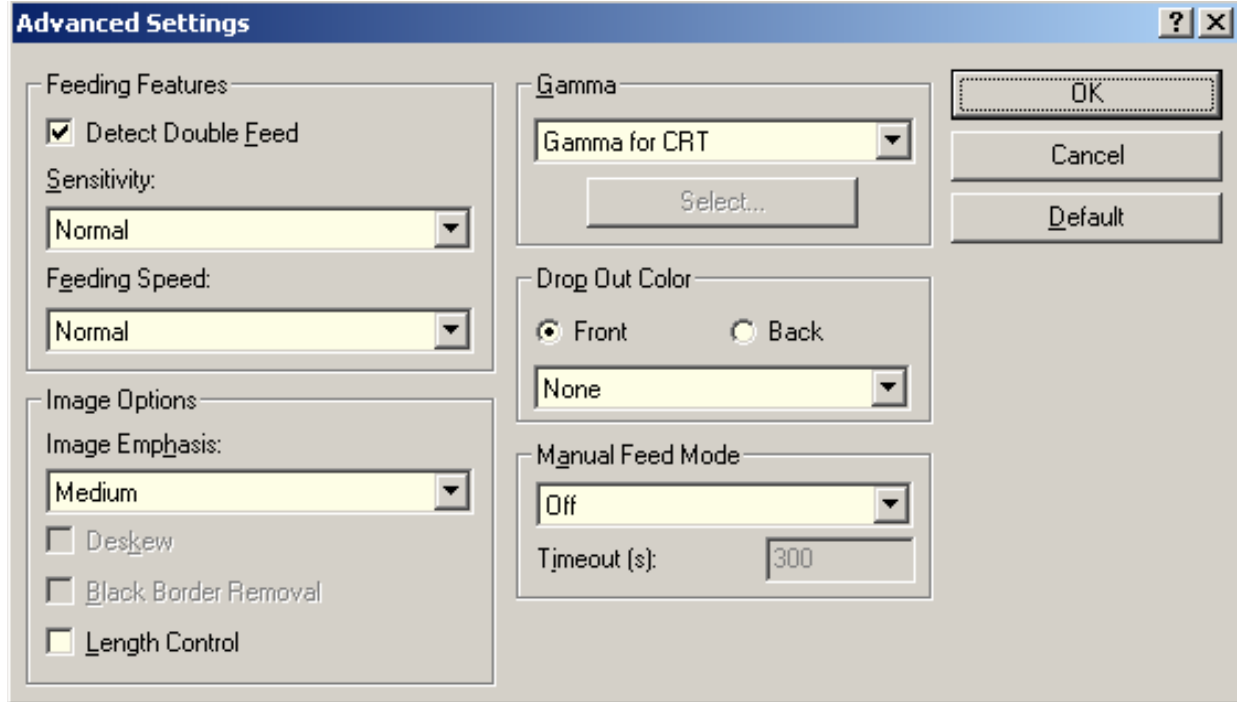


Figure 2

3.5.1 Detect Double Feed

Description: Enables or disables double feed detection.

Values: OFF
ON

Default: OFF

Dependencies: When this control is disabled, Sensitivity is not available.
Default to ON for 1400u mode, OFF to other models.

3.5.2 Sensitivity

Description: Select ultrasonic sensitivity.

Values: Low
Normal
High

Default: N/A

Dependencies: This control is available when Detect Double Feed is enabled.

3.5.3 Feeding Speed

Description: Select scanning speed.

Values: NORMAL
FAST

Default: NORMAL

Dependencies: This control is available when 24-bit Color is selected.

3.5.4 Image Emphasis

Description: Selects the image emphasis.

Values: None
Low
Medium
High
Smooth

Default: Medium

Dependencies: Choices available only when brightness is set to a manual value.

3.5.5 Deskew

Description: Enables or disables Deskew.

Values: OFF
ON

Default: OFF

Dependencies: This control is available only when black and white is selected.

3.5.6 Black Border Removal

Description: Enables or disables black border removal.

Values: OFF
ON

Default: OFF

Dependencies: This control is available only when black and white is selected.

3.5.7 Length Control

Description: When enabled, detects the length of the page.

Values: OFF
ON

Default: OFF

Dependencies: N/A.

3.5.8 Gamma

Description: Selects the gamma table.

Values: Normal
Gamma for CRT
User Download

Default: Normal

Dependencies: Choices only available when not scanning binary.

3.5.9 Gamma Select

Description: Selects the gamma table to download to the scanner.

Values:

Default:

Dependencies: Only available when Gamma is set to User Download.

3.5.10 Drop Out Color

Description: Sets up the dropout color for front and back sides.

Values: None
Green
Red
Blue

Default: None

Dependencies: This control is not available when color is selected.

3.5.11 Manual Feed Mode

Description: Selects the manual feed mode.

Values: OFF
Start Button
ON

Default: OFF

Dependencies: This control disables Timeout control when OFF is selected.

3.5.12 Manual Feed Mode Timeout

Description: Selects the timeout value for the manual feed mode, measured in seconds.

Values: 1 – 300 seconds.

Default: 300 seconds.

Dependencies: Only available when Manual Timeout is enabled (not Off).

3.5.13 OK

Description: Closes the dialog and notifies caller that the user accepts the changes made within the dialog.

Values: N/A

Default: N/A

Dependencies: None.

3.5.14 Cancel

Description: Closes the dialog and notifies caller that the user does not accept the changes made within the dialog.

Values: N/A

Default: N/A

Dependencies: None.

3.5.15 Default

Description: Resets all the tags on this dialog to their default values.

Values: N/A

Default: N/A

Dependencies: None.

3.6 Imprinter

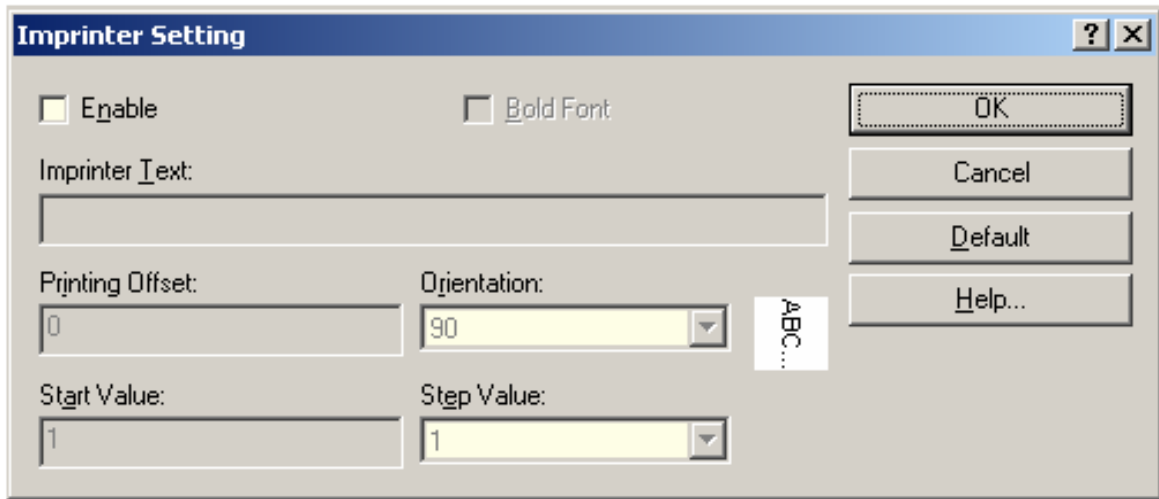


Figure 3

3.6.1 Enable

Description: Enable Endorser functions.

Values: OFF
ON

Default: OFF

Dependencies: The endorser will only be active if there is text in "Imprinter Text"

3.6.2 Bold Font

Description: Enables or disables a bold font.

Values: Normal Font(OFF)
Bold Font(ON)

Default: Normal Font(OFF)

Dependencies: N/A.

3.6.3 Imprinter Text

Description: Defines the text to imprint on each page. An incremental counter can be printed using a '#' in the text. The date and time can also be printed. See the Imprinter Help dialog for a more complete explanation.

Values: Any text with the following limits.

The text can only be 72 characters long.

All characters must have a value between 0x20 and 0x5f or between 0x61 and 0x7e.

Default: ""

Dependencies: N/A.

3.6.4 Printing Offset

Description: Sets the offset from the top of the page for the start of the endorser text. To calculate the actual offset, multiply by 2.38mm and then add 10mm if the Orientation is 90 or 270 or multiply by 3.44mm and then add 10mm if the orientation is 0 or 180.

Values: 0 – 99

Default: 0

Dependencies: N/A.

3.6.5 Orientation

Description: Selects the orientation of the characters. See the icon on the dialog for a sample.

Values: 0
90
180
270

Default: 90

Dependencies: N/A.

3.6.6 Start Value

Description: Sets the starting value for an incremental counter.

Values: 0 – 9999999

Default: 0

Dependencies: The start value is only used if there is a '#' in the Imprinter Text.

3.6.7 Step Value

Description: Sets the increment value for a counter. The value of the counter will be increased by this number for each page.

Values: 1 – 9

Default: 1

Dependencies: The start value is only used if there is a '#' in the Imprinter Text.

3.6.8 Ok

Description: Closes the dialog and notifies caller that the user accepts the changes made within the dialog.

Values: N/A

Default: N/A

Dependencies: None.

3.6.9 Cancel

Description: Closes the dialog and notifies caller that the user does not accept the changes made within the dialog.

Values: N/A

Default: N/A

Dependencies: None.

3.6.10 Help...

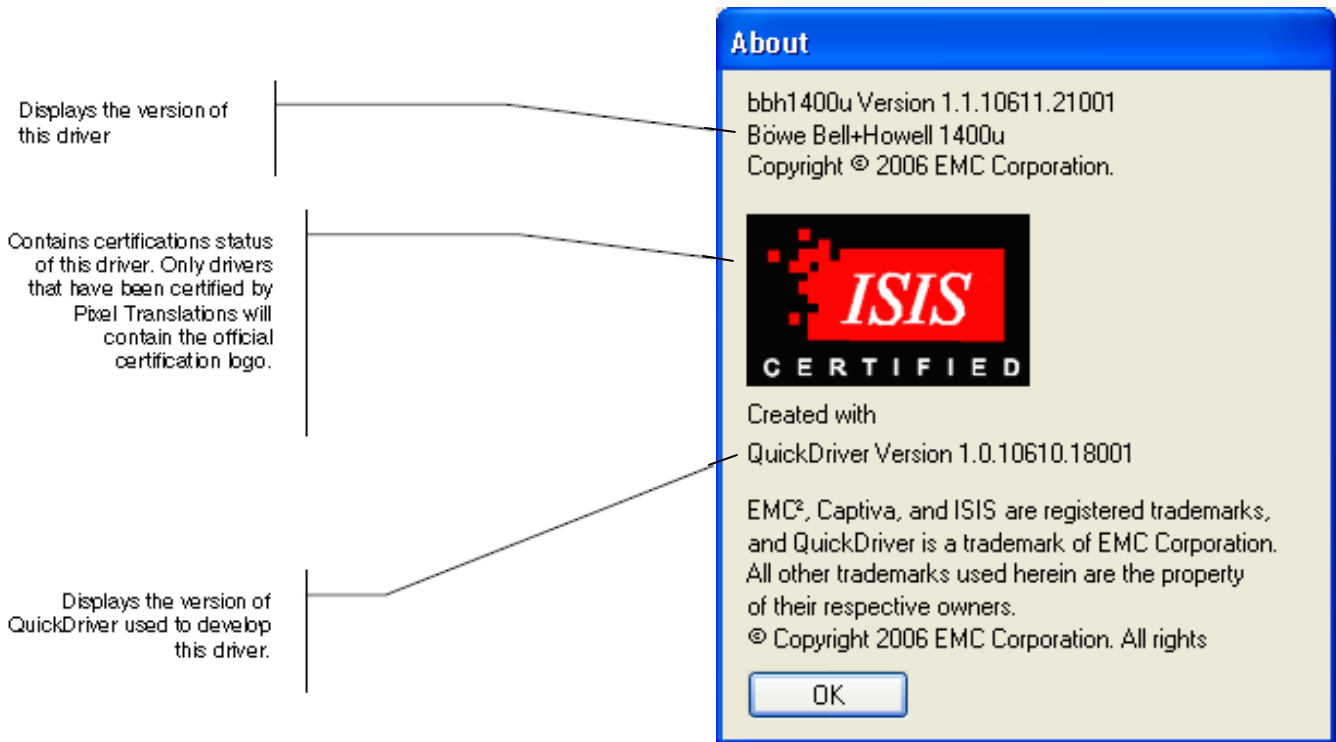
Description: Displays help dialog box.

Values: N/A

Default: N/A

Dependencies: None.

3.7 About Dialog



4 API

This sections details elements that are related to the API functions of this driver.

4.1 Settings of image mode

Samples per pixel Bits per samples WINDOW Note
Black and White 1 1 0
16-Level Gray 1 4 0
256-Level Gray 1 8 0
24-bit Color 3 8 0

4.2 Settings of imprinter

The format string can include a combination of format specifiers (with modifiers) and messages. Here is help content TWAIN driver support.

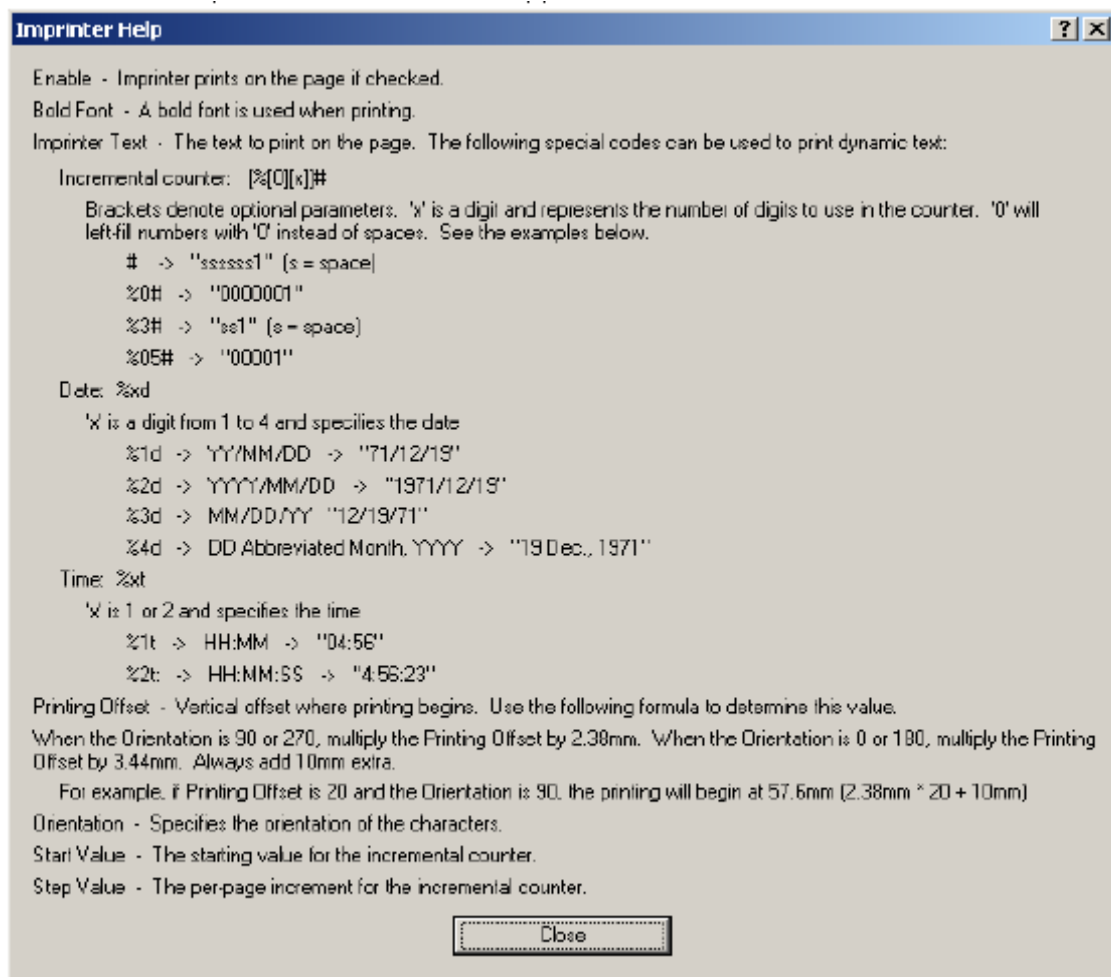


Figure 7

4.3 Supported TWAIN Capabilities

Following TWAIN capabilities are supported by this version of TWAIN driver.

Capabilities	value	Supported	Not Supported	Note
CAP_CUSTOMBASE	0x8000		○	
CAP_XFERCOUNT	0x0001	○		
ICAP_COMPRESSION	0x0100	○		
ICAP_PIXELTYPE	0x0101	○		
ICAP_UNITS	0x0102	○		
ICAP_XFERMECH	0x0103	○		
CAP_AUTHOR	0x1000		○	
CAP_CAPTION	0x1001		○	
CAP_FEEDERENABLED	0x1002	○		
CAP_FEEDERLOADED	0x1003	○		
CAP_TIMEDATE	0x1004		○	
CAP_SUPPORTEDCAPS	0x1005	○		Please issue this capability to get all of supported capabilities in the driver.
CAP_EXTENDED CAPS	0x1006		○	
CAP_AUTOFEED	0x1007	○		
CAP_CLEARPAGE	0x1008		○	
CAP_FEEDPAGE	0x1009		○	
CAP_REWINDPAGE	0x100a		○	
CAP_INDICATORS	0x100b	○		
CAP_SUPPORTEDCAPSEXT	0x100c		○	
CAP_PAPERDETECTABLE	0x100d	○		
CAP_UICONTROLLABLE	0x100e	○		
CAP_DEVICEONLINE	0x100f	○		
CAP_AUTOSCAN	0x1010	○		
CAP_THUMBNAILSENABLED	0x1011		○	
CAP_DUPLEX	0x1012	○		
CAP_DUPLEXENABLED	0x1013	○		
CAP_ENABLEDSUIONLY	0x1014	○		
CAP_CUSTOMDSDATA	0x1015	○		
CAP_ENDORSER	0x1016	○		

CAP_JOBCONTROL	0x1017	○		
CAP_ALARMS	0x1018		○	
CAP_ALARMVOLUME	0x1019		○	
CAP_AUTOMATICCAPTURE	0x101a		○	
CAP_TIMEBEFOREFIRSTCAPTURE	0x101b		○	
CAP_TIMEBETWEENCAPTURES	0x101c		○	
CAP_CLEARBUFFERS	0x101d		○	
CAP_MAXBATCHBUFFERS	0x101e		○	
CAP_DEVICEIMMEDIATE	0x101f		○	
CAP_POWERSUPPLY	0x1020		○	
CAP_CAMERAPREVIEWUI	0x1021		○	
CAP_DEVICEEVENT	0x1022		○	
CAP_SERIALNUMBER	0x1024		○	
CAP_PRINTER	0x1026	○		
CAP_PRINTERENABLED	0x1027	○		
CAP_PRINTERINDEX	0x1028	○		
CAP_PRINTERMODE	0x1029	○		
CAP_PRINTERSTRING	0x102a	○		
CAP_PRINTERSUFFIX	0x102b		○	
CAP_LANGUAGE	0x102c		○	
CAP_FEEDERALIGNMENT	0x102d		○	
CAP_FEEDERORDER	0x102e		○	
CAP_REACQUIREALLOWED	0x1030		○	
CAP_BATTERYMINUTES	0x1032		○	
CAP_BATTERYPERCENTAGE	0x1033		○	
ICAP_AUTOBRIGHT	0x1100	○		
ICAP_BRIGHTNESS	0x1101	○		
ICAP_CONTRAST	0x1103	○		
ICAP_CUSTHALFTONE	0x1104		○	
ICAP_EXPOSURETIME	0x1105		○	
ICAP_FILTER	0x1106		○	
ICAP_FLASHUSED	0x1107		○	
ICAP_GAMMA	0x1108		○	

ICAP_HALFTONES	0x1109	<input type="radio"/>		
ICAP_HIGHLIGHT	0x110a		<input type="radio"/>	
ICAP_IMAGEFILEFORMAT	0x110c	<input type="radio"/>		
ICAP_LAMPSTATE	0x110d		<input type="radio"/>	
ICAP_LIGHTSOURCE	0x110e		<input type="radio"/>	
ICAP_ORIENTATION	0x1110		<input type="radio"/>	
ICAP_PHYSICALWIDTH	0x1111	<input type="radio"/>		
ICAP_PHYSICALHEIGHT	0x1112	<input type="radio"/>		
ICAP_SHADOW	0x1113		<input type="radio"/>	
ICAP_FRAMES	0x1114	<input type="radio"/>		
ICAP_XNATIVE RESOLUTION	0x1116		<input type="radio"/>	
ICAP_YNATIVE RESOLUTION	0x1117		<input type="radio"/>	
ICAP_XRESOLUTION	0x1118	<input type="radio"/>		
ICAP_YRESOLUTION	0x1119	<input type="radio"/>		
ICAP_MAXFRAMES	0x111a	<input type="radio"/>		
ICAP_TILES	0x111b		<input type="radio"/>	
ICAP_BITORDER	0x111c	<input type="radio"/>		
ICAP_CCITTKFACTOR	0x111d		<input type="radio"/>	
ICAP_LIGHTPATH	0x111e		<input type="radio"/>	
ICAP_PIXELFLAVOR	0x111f	<input type="radio"/>		
ICAP_PLANARCHUNKY	0x1120	<input type="radio"/>		
ICAP_ROTATION	0x1121		<input type="radio"/>	
ICAP_SUPPORTEDSIZES	0x1122	<input type="radio"/>		
ICAP_THRESHOLD	0x1123		<input type="radio"/>	
ICAP_XSCALING	0x1124		<input type="radio"/>	
ICAP_YSCALING	0x1125		<input type="radio"/>	
ICAP_BITORDERCODES	0x1126		<input type="radio"/>	
ICAP_PIXELFLAVORCODES	0x1127		<input type="radio"/>	
ICAP_JPEGPIXELTYPE	0x1128		<input type="radio"/>	
ICAP_TIMEFILL	0x112a		<input type="radio"/>	
ICAP_BITDEPTH	0x112b	<input type="radio"/>		
ICAP_BITDEPTHREDUCTION	0x112c	<input type="radio"/>		
ICAP_UNDEFINEDIMAGE SIZE	0x112d	<input type="radio"/>		
ICAP_IMAGE DATASET	0x112e		<input type="radio"/>	

ICAP_EXTIMAGEINFO	0x112f	<input type="radio"/>		
ICAP_MINIMUMHEIGHT	0x1130	<input type="radio"/>		
ICAP_MINIMUMWIDTH	0x1131	<input type="radio"/>		
ICAP_FLIPROTATION	0x1136		<input type="radio"/>	
ICAP_BARCODEDETECTION ENABLED	0x1137		<input type="radio"/>	
ICAP_SUPPORTEDBARCODE TYPES	0x1138		<input type="radio"/>	
ICAP_BARCODEMAXSEARC HPRIORITIES	0x1139		<input type="radio"/>	
ICAP_BARCODESEARCHPRI ORITIES	0x113a		<input type="radio"/>	
ICAP_BARCODESEARCHMO DE	0x113b		<input type="radio"/>	
ICAP_BARCODEMAXRETRIE S	0x113c		<input type="radio"/>	
ICAP_BARCODETIMEOUT	0x113d		<input type="radio"/>	
ICAP_ZOOMFACTOR	0x113e		<input type="radio"/>	
ICAP_PATCHCODEDETECTI ONENABLED	0x113f		<input type="radio"/>	
ICAP_SUPPORTEDPATCHCO DETYPES	0x1140		<input type="radio"/>	
ICAP_PATCHCODEMAXSEAR CHPRIORITIES	0x1141		<input type="radio"/>	
ICAP_PATCHCODESEARCHP RIORITIES	0x1142		<input type="radio"/>	
ICAP_PATCHCODESEARCH MODE	0x1143		<input type="radio"/>	
ICAP_PATCHCODEMAXRETR IES	0x1144		<input type="radio"/>	
ICAP_PATCHCODETIMEOUT	0x1145		<input type="radio"/>	
ICAP_FLASHUSED2	0x1146		<input type="radio"/>	
ICAP_IMAGEFILTER	0x1147		<input type="radio"/>	
ICAP_NOISEFILTER	0x1148		<input type="radio"/>	
ICAP_OVERSCAN	0x1149		<input type="radio"/>	
ICAP_AUTOMATICBORDERD ETECTION	0x1150	<input type="radio"/>		
ICAP_AUTOMATICDESKEW	0x1151		<input type="radio"/>	
ICAP_AUTOMATICROTATE	0x1152		<input type="radio"/>	
ICAP_JPEGQUALITY	0x1153		<input type="radio"/>	
CAP_CAMERAENABLE	0x801D	<input type="radio"/>		This device does not support multistream.
CAP_CAMERAORDER	0x801E	<input type="radio"/>		This device does not support multistream.
CCAP_QUIETERRORS	0x8100	<input type="radio"/>		This capability suppresses error dialog. Application set TRUE with this capability to hide error dialog.