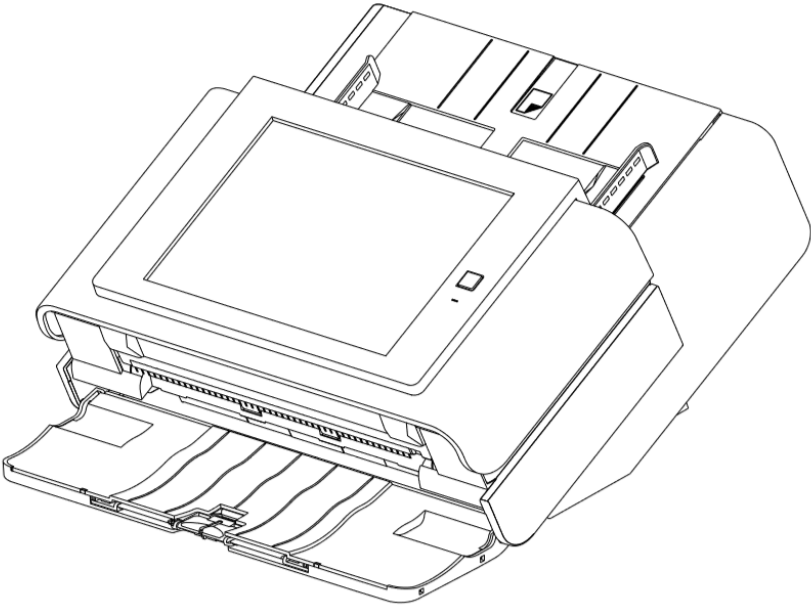


SS730EX Plus

Release Notes
April 2024



- **Introduction**
- **Scan Station Portfolio Overview**
- **Specifications**
- **Scan Station 730EX Plus Security**
- **Windows Security Updates on the SS730EX Plus**
- **April 2024 Update**
 - New Scan Station image for newly manufactured and AURed SS730EX Plus machines
- **Accessories for the Scan Station 730EX Plus**
- **August 2022 Update**
 - Scanner Driver Update – Version 6.6
- **January 2022 Updates**
 - Scanner Administration Tool – Version 1.4.56
 - Kodak Scan Station Application – Release 1.5.69
- **March 2021 Updates**
 - Scanner Administration Tool - Version 1.4.34
 - Kodak Scan Station Application – Release 1.5.58
- **Initial Release Information (March 2020)**
 - Scanner Administration Tool (SAT) Updates – Version 1.4.23

Windows 10 Scan Station

- The **Scan Station 730EX Plus** is the current model of the Scan Station, leveraged from the existing Scan Station 710 and 730EX with the internal operating system updated to **Windows 10 IoT Enterprise LTSC 2021 (64-bit) version**
- The **Windows 10 IoT version** was chosen because with this version Microsoft will only provide updates to security related features
 - This eliminates the risk of Microsoft feature updates affecting the Kodak or custom scanning applications
- Certified to Energy Star 3.0

Older Models (Sales Discontinued)	PPM	Flatbed Accessary	Duty Cycle	Operating System	TLS Support	Note:
Scan Station 710	70	Y	6K	Win 8.0	1.0 only	No 3 rd party Integrations
Scan Station 730EX	70	Y	6K	Win 8.1	1.0, 1.1, 1.2	3 rd party Integrations Allowed

Current Model	PPM	Flatbed Accessary	Duty Cycle	Operating System	TLS Support	Note:
Scan Station 730EX Plus	70	Y	6K	Win 10 IoT	1.1 and 1.2	Kodak Scan Station application and 3 rd party Integrations Allowed

Pages Per Minute for all Scan Stations:

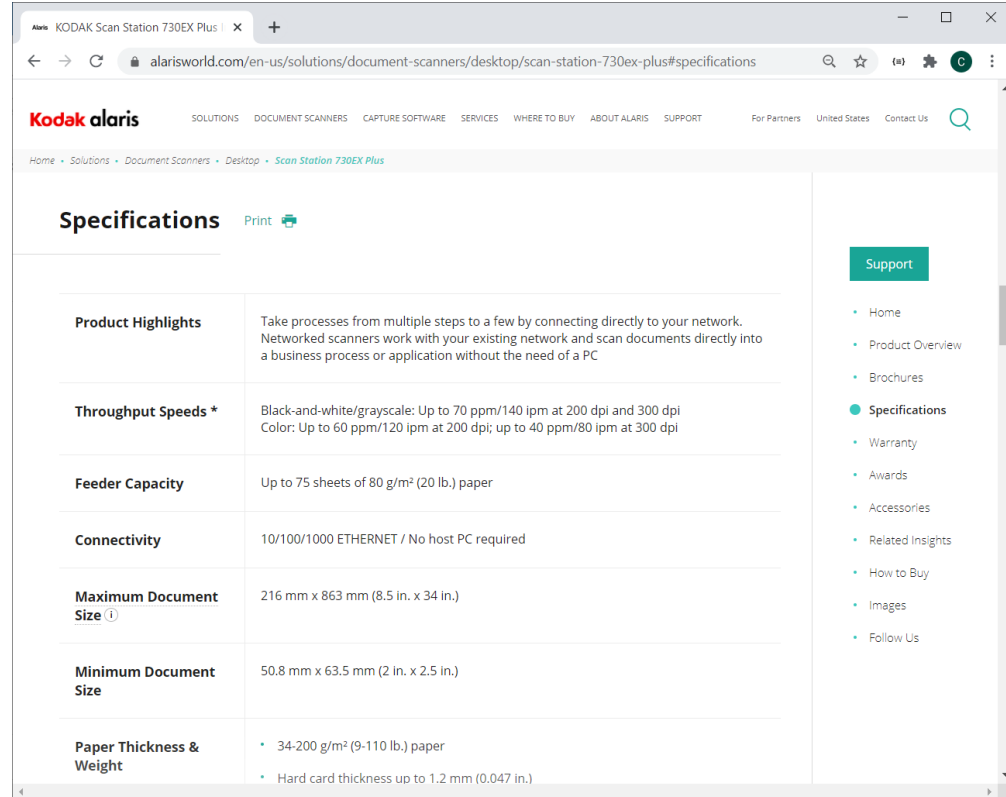
- B&W/Gray: 70ppm at 200 or 300 DPI
- Color 200: 60ppm
- Color 300: 40ppm

Specifications

The **Scan Station 730EX Plus** Specifications (Hardware and KODAK Scan Station application capabilities) have not changed from the SS710 and SS730EX with the exception of the Windows 10 embedded operating system

Specifications can be found on the web at:

<https://www.alarisworld.com/en-us/solutions/document-scanners/desktop/scan-station-730ex-plus#specifications>



The screenshot shows a web browser displaying the specifications page for the Kodak Alaris Scan Station 730EX Plus. The page features a navigation menu at the top with links for SOLUTIONS, DOCUMENT SCANNERS, CAPTURE SOFTWARE, SERVICES, WHERE TO BUY, ABOUT ALARIS, and SUPPORT. A breadcrumb trail indicates the path: Home > Solutions > Document Scanners > Desktop > Scan Station 730EX Plus. The main content area is titled 'Specifications' and includes a 'Print' button. A table lists various specifications, and a right-hand sidebar contains a 'Support' section with links to Home, Product Overview, Brochures, Specifications (highlighted), Warranty, Awards, Accessories, Related Insights, How to Buy, Images, and Follow Us.

Product Highlights	Take processes from multiple steps to a few by connecting directly to your network. Networked scanners work with your existing network and scan documents directly into a business process or application without the need of a PC
Throughput Speeds *	Black-and-white/grayscale: Up to 70 ppm/140 ipm at 200 dpi and 300 dpi Color: Up to 60 ppm/120 ipm at 200 dpi; up to 40 ppm/80 ipm at 300 dpi
Feeder Capacity	Up to 75 sheets of 80 g/m ² (20 lb.) paper
Connectivity	10/100/1000 ETHERNET / No host PC required
Maximum Document Size ⓘ	216 mm x 863 mm (8.5 in. x 34 in.)
Minimum Document Size	50.8 mm x 63.5 mm (2 in. x 2.5 in.)
Paper Thickness & Weight	<ul style="list-style-type: none"> 34-200 g/m² (9-110 lb.) paper Hard card thickness up to 1.2 mm (0.047 in.)

Scan Station 730EX Plus Security

The Scan Station 700 Plus Series is configured to prevent external attacks from the Internet and from direct access by users. The following security features will block access to the Scan Station's operating system:

- **Microsoft Windows Security updates**
 - The Windows update service is turned on by default in the 700EX Plus Series
 - The scanner will check for security updates and apply them as needed
- **Microsoft Windows Defender**
 - The Windows Defender service is always updating and running on the 700EX Plus Series. The service will ensure security through:
 - Anti-virus checking
 - Verification that installed applications are signed
- The Scan Station uses the **Windows firewall** to block all unnecessary ports.
- The Scan Station is also configured to respond to an ICMP echo request (also known as a *ping*)
 - This can be useful for diagnosing connectivity issues

Scan Station 730EX Plus Security (continued)

Continuation of security features that will block access to the Scan Station's operating system:

- Only applications signed from valid authorities are allowed to be installed on the system
- The Scan Station USB ports are **protected from external intrusions**
 - The operating system is configured to disable any auto-run action that could occur when presenting a new USB device to the system
 - The Scan Station recognizes the presence of a USB removable device, but will only open and read files that have been created and encrypted specifically for use by the Scan Station
 - Any file found on a removable device that is not properly encrypted will be ignored
 - This makes it almost impossible to introduce a virus by inserting a removable device with an infected executable.
- The Scan Station will only read a **valid, encrypted configuration file**
- The **underlying operating system is not available** to the administrator or user.
 - Updates to the operating system and/or the Scan Station software will be made available on the Kodak Alaris website as needed

Scan Station 730EX Plus Security (continued)

Continuation of security features that will block access to the Scan Station's operating system:

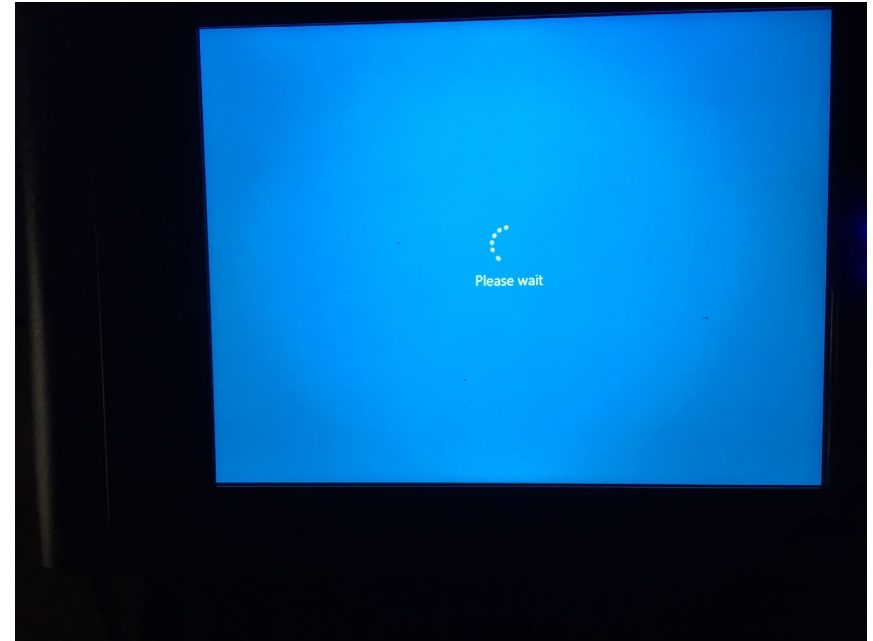
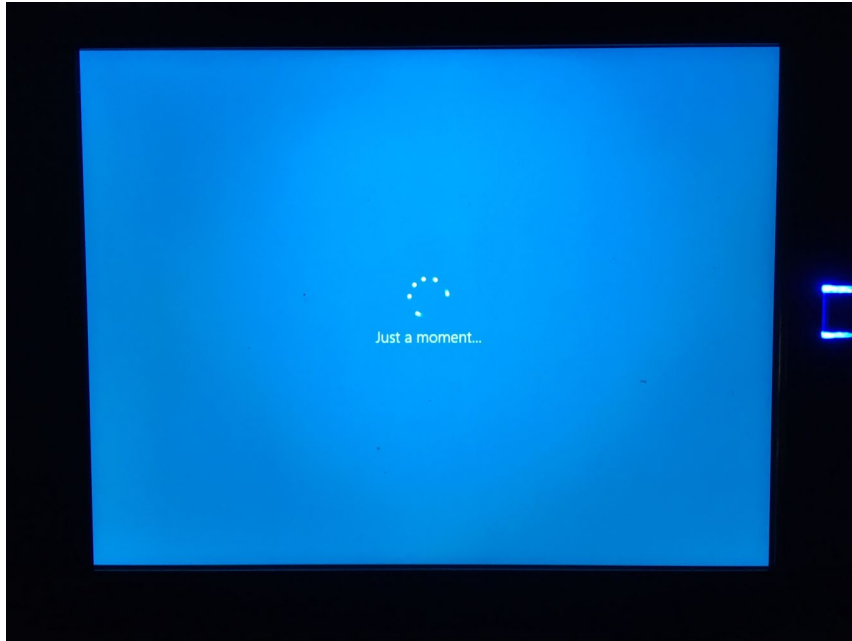
- To help secure the Scan Station, the customer can set up a **Remote Access Password** and/or a **Local Access Password**
 - The **Remote Access Password** protects the Scan Station from being modified by another (unauthorized) installation of the Scanner Administration Tool
 - The **Local Access Password** prevents a walk-up user from modifying the Scan Station via a USB removable device
- **Notes:**
 - A Remote or Local Access Password that is lost or forgotten may be able to be recovered by the Alaris Service and Support organization.
 - The Service case that is established must be escalated to **Level 3 Support in Rochester** for assistance
- The customer can configure the Scan Station to **require a user to log in** before scanning

Windows Security Updates on the 730EX Plus

- The new 730EX Plus scanner will (by default) automatically apply **Windows Security Updates** to the operating system.
- The scanner will attempt to connect to the public Microsoft Update server (or a local update server if configured to do so) daily to download **security updates**.
- Any security updates that have been downloaded will, by default, be applied at 3:00am local time
 - If the Scan Station is in Power Saver mode at that time, it will get woken up
 - Security updates (if available) may also be applied upon reboot of the Scan Station
- Can only be enabled/disabled from the Scanner Administration Tool (SAT)
 - Can not be enabled/disabled from the Scan Station itself
 - The time at which to apply any Security Updates (that have been downloaded) is also be configurable

Windows Security Updates on the 730EX Plus (continued)

- If the end user is present when the Windows security update is taking place they will likely see the following during the updates:



April 2024 Update

New Scan Station SS730EX Plus Hard Drive Image


- Available on newly shipped and manufactured machines
- Available on AUR (Advanced Unit Replacement) machines

NOTE: Due to Windows licensing requirements, existing Scan Stations cannot be updated to the new Hard Drive Image

Includes the Following

- **Kodak Scan Station Application release 1.5.78**
 - Bug fix release. For details, see the following page.
 - It is recommended to upgrade your Scanner Administration Tool installation to the latest release, version 1.4.57
- **OS Version 3.6**
 - Windows 10 IoT Enterprise LTSC 2021 (64-bit)
 - Updated Windows 10 OS with applied security updates through November 2023
 - If your Scan Station 730EX Plus encountered a “Blank Screen Reboot” where the Scan Station would not complete the boot up process, the new Hard Drive Image with this OS avoids Microsoft updates at the root of the issue.

Note: The impact of any future Microsoft updates are not known.
- **Scanner Driver 6.8**

 KSS52191003

KSS52191003

Page Count 90

Versions

Release	1.5.78
Embedded	1.1.8.3
Base	1.1.5.2
Setup Wizard	1.1.4.2
OS	3.6
Scanner Driver	6.8 (wiaentry: 5.2.0.0)
Windows Defender Version	1.409.620.0
Windows Defender Last Updated	5/1/2024 3:05:25 AM

April 2024 Update (continued)

Problems Fixed in 1.5.78 Release

- **File naming from OCR or Barcode zone** (configured with an Index Template) is incorrect when scanning multiple documents
 - All document file names are named using the OCR or Barcode zone value from the first document scanned
- **Office 365 Email Error**
 - Error message shown in the Scan Station log file (accessible from the SAT tool)
“Failed to read beginning of SSL/TLS record”
- **Scan to FTPS no longer working**
 - Error message shown in the Scan Station log file
“SocketError: WSAECONNABORTED An established connection was aborted by the software in your host machine”
- **Output failing with invalid sub-directory name** when Index Template is used for a Job
 - Output fails because a “?” was inserted into the sub-directory structure

NOTE: If you are encountering one of these problems on your Scan Station 730EX Plus, please contact your [Kodak Alaris support representative](#) for a resolution

Accessories for the Scan Station 730EX Plus

The following accessories are available for the Scan Station 730EX Plus

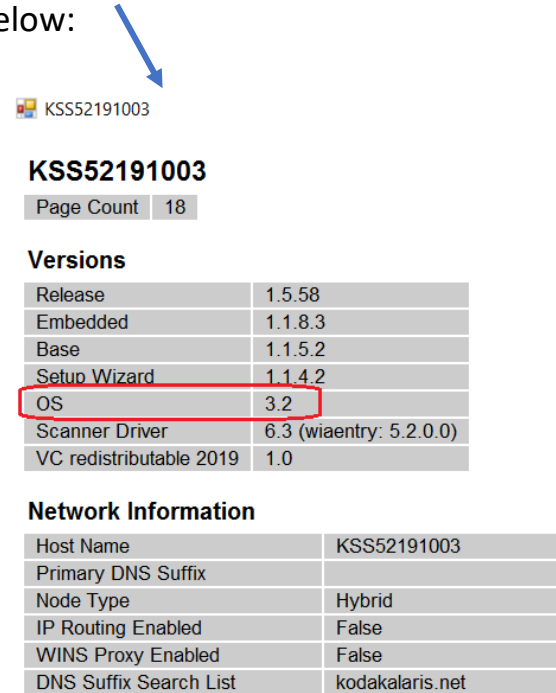
Before installing any of these accessories, check your Scan Station **INFORMATION** screen (accessible via the SAT tool or from the Scan Station display) and then follow the guidelines below:

VC 2019

- Installs the Visual C++ 2019 redistributables on the Scan Station
- If your Scan Station has **OS 3.2** and you need to upgrade the Kodak Scan Station **Release** to version 1.5.69 or later, then **you must download the VC 2019 accessory prior to upgrading your Scan Station Release**
- If your Scan Station has **OS 3.3, 3.4, or 3.6**, then you do not need to download this accessory as the Visual C++ redistributables are included with the OS

KaUpdates-1-4-1

- Updates the KaUpdates program to the latest release, version 1.4.1
- KaUpdates initiates the Windows Security Update processing
- If your Scan Station has **OS 3.2 or 3.3**, and Windows Updates are enabled, then it is recommended to download the KaUpdates-1-4-1 accessory to your Scan Station.
 - If you need to apply Windows Updates from local Windows Update Server, **then it is required to download this accessory.**
- If you Scan Station has **OS 3.4 or 3.6**, then you do not need to download this accessory as version 1.4.1 of KaUpdates is included with the OS



KSS52191003

KSS52191003

Page Count 18

Versions

Release	1.5.58
Embedded	1.1.8.3
Base	1.1.5.2
Setup Wizard	1.1.4.2
OS	3.2
Scanner Driver	6.3 (wiaentry: 5.2.0.0)
VC redistributable 2019	1.0

Network Information

Host Name	KSS52191003
Primary DNS Suffix	
Node Type	Hybrid
IP Routing Enabled	False
WINS Proxy Enabled	False
DNS Suffix Search List	kodakalaris.net

Accessories for the Scan Station 730EX Plus (continued)

ScannerDriver 6-6

- Updates the Scanner Driver in the Scan Station to the version 6.6 release
- Please refer to the **August 2022 Update** later in this document for the details on this release
- If your Scanner Driver is already at the 6.6 or later release, then you do not need to download this accessory

 192.168.1.18

KSS52190504

Page Count 17

Versions

Release	1.5.69
Embedded	1.1.8.3
Base	1.1.5.2
Setup Wizard	1.1.4.2
OS	3.2
Scanner Driver	6.6 (wiaentry: 5.2.0.0)
Windows Defender Version	1.373.657.0
Windows Defender Last Updated	8/20/2022 3:00:32 AM

August 2022 Update

KODAK Scan Station Application

- Optional Accessory [ScannerDriver 6-6](#)

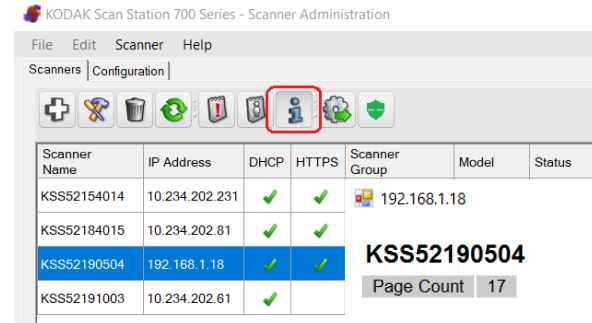
Summary

- [ScannerDriver 6-6](#) is an updated scanner driver release for the Scan Station 730EX Plus that fixes the following problems:
 - Multi-feed message intermittently can take up to 10 seconds to display on the Scan Station
 - Scanner throttles and slows down significantly when scanning graphic/picture type documents

August 2022 Update (continued)

Installation of the Scanner Driver 6-6 Accessory

- Select the Scan Station from the Scanner Administration Tool (SAT) grid and press the **Info** button to display detailed information about the Scan Station
- If the Scanner Driver is already at Version 6.6 or later, then there is no need to install the accessory.
- Otherwise, download the accessory from the web page to your PC and then use the SAT tool to upload the accessory and update the Scan Station.



KODAK Scan Station 700 Series - Scanner Administration

File Edit Scanner Help

Scanners | Configuration

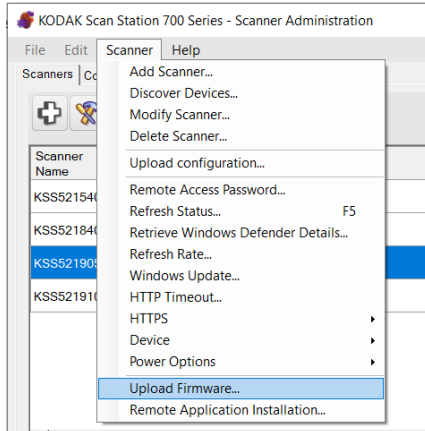
Scanner Name	IP Address	DHCP	HTTPS	Scanner Group	Model	Status
KSS52154014	10.234.202.231	✓	✓	192.168.1.18		
KSS52184015	10.234.202.81	✓	✓			
KSS52190504	192.168.1.18	✓	✓			
KSS52191003	10.234.202.61	✓				

KSS52190504

Page Count 17

Versions

Release	1.5.69
Embedded	1.1.8.3
Base	1.1.5.2
Setup Wizard	1.1.4.2
OS	3.2
Scanner Driver	6.6 (wiaentry: 5.2.0.0)
Windows Defender Version	1.373.657.0
Windows Defender Last Updated	8/20/2022 3:00:32 AM

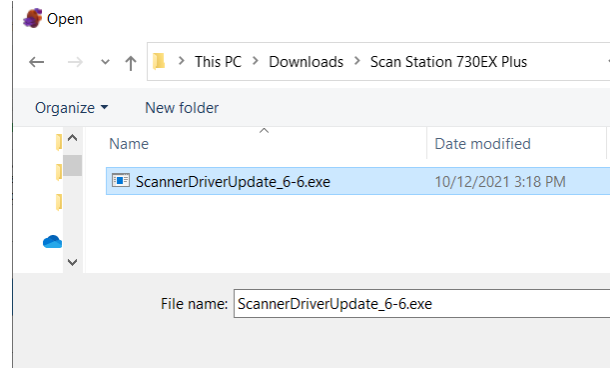


KODAK Scan Station 700 Series - Scanner Administration

File Edit Scanner Help

Scanners | Configuration

- Add Scanner...
- Discover Devices...
- Modify Scanner...
- Delete Scanner...
- Upload configuration...
- Remote Access Password...
- Refresh Status... F5
- Retrieve Windows Defender Details...
- Refresh Rate...
- Windows Update...
- HTTP Timeout...
- HTTPS
- Device
- Power Options
- Upload Firmware...**
- Remote Application Installation...



Open

This PC > Downloads > Scan Station 730EX Plus

Organize New folder

Name	Date modified
ScannerDriverUpdate_6-6.exe	10/12/2021 3:18 PM

File name: ScannerDriverUpdate_6-6.exe

January 2022 Update

KODAK Scan Station Application

- Version **1.5.69**
- Required Accessory **VC2019**
- Required Accessory **KaUpdates_1-4-1**

Scanner Administration Tool

- Version **1.4.56**


Summary

- **SAT (Scanner Administration Tool) Main Screen/Grid** changes
- Windows Updates from a **local Windows Update server**
- **Configurable timeouts** when logging on via Active Directory
- Acknowledging **destination output errors**
- **Streamlined scanning** when entering index data for Kofax Front Office Server
- **Fixed Rotation** Scan Settings
- Integrator's application **Firewall Rules**

January 2022 Update

Installation Notes

- You must do the following to upgrade an existing SS730EX Plus to Version 1.5.69:
 - Upgrade to or install **Version 1.4.57** of the Scanner Administration Tool (SAT)
 - If your Scan Station has an **OS Version of 3.2**, download the **VC2019 Accessory** to the Scan Station 730EX Plus
 - This will install the Visual C++ 2019 redistributables on the Scan Station
 - If your Scan Station has **OS Version 3.3 or later**, then the VC2019 Accessory does not need to be downloaded as the Visual C++ 2019 redistributables are incorporated into the OS
 - If you Scan Station has an **OS Version of 3.2 or 3.3**, download the **Upgrade_KaUpdates_1-4-1 Accessory** to the Scan Station 730EX Plus
 - If your Scan Station has **OS Version 3.4 or later**, then the KaUpdates_1-4-1 Accessory does not need to be download as the KaUpdates 1-4-1 is incorporated into the OS.
 - Upgrade your Scan Station 730EX Plus to **Version 1.5.69** of the KODAK Scan Station Application
 - Detailed install instructions can be found at the end of these Release Notes**
- Version 1.4.57 of the SAT requires that your network and the PC running the SAT **has TLS 1.2 enabled**
- Version 1.5.69 of the KODAK Scan Station Application must only be applied to Scan Station 730EX Plus models
 - If you have older Scan Station models (e.g., SS710 or SS730EX), **DO NOT** download Version 1.5.69 or else they will become inoperable and will have to be replaced

 KSS52191003

KSS52191003

Page Count 18

Versions

Release	1.5.58
Embedded	1.1.8.3
Base	1.1.5.2
Setup Wizard	1.1.4.2
OS	3.2
Scanner Driver	6.3 (wiaentry: 5.2.0.0)
VC redistributable 2019	1.0

Network Information

Host Name	KSS52191003
Primary DNS Suffix	
Node Type	Hybrid
IP Routing Enabled	False
WINS Proxy Enabled	False
DNS Suffix Search List	kodakalaris.net

SAT Grid Changes

Version Number Display

- The Version Number of the **Kodak Scan Station embedded application** is now displayed on the Scanner Administration grid of Scan Stations

Advanced Logging

- When calling into Service and Support, customers may be asked to enable Advanced Logging to better assist Kodak Alaris in troubleshooting a reported issue

KODAK Scan Station 700 Series - Scanner Administration

Scanner Name	IP Address	DHCP	HTTPS	Scanner Group	Model	Status	Last Command	Comment	Mac Address	Version
KSS52154014	10.234.202.231	✓	✓		710	Not Found	Details - 4/28/2021 12:53:37 PM		00045F9824C0	
KSS52184015	10.234.202.81	✓	✓		730EX	Idle	File Upload - 9/9/2021 12:05:09 PM - Success		00045F980C8E	1.3.67
KSS52191003	10.234.202.61	✓	✓		730EX Plus	Idle	File Upload - 12/1/2021 3:38:02 PM - Success		00045FA220D8	1.5.58
KSS52190504	192.168.1.2	✓	✓		730EX Plus	Not Found	Reboot - 12/9/2021 10:06:02 AM		7085C223EECD	1.5.65
KSS-51552535	10.234.202.97	✓	✓		730EX Plus	Not Found	Retrieve Logs - 11/18/2021 1:24:14 PM		00045FA67C69	

KODAK Scan Station 700 Series - Scanner Administration

Scanner Context Menu:

- Add Scanner...
- Discover Devices...
- Modify Scanner...
- Delete Scanner...
- Upload configuration...
- Remote Access Password...
- Refresh Status... F5
- Refresh Rate...
- Windows Update...
- HTTP Timeout...
- HTTPS
- Device
 - Retrieve Logs...
 - Clear Logs...
 - Retrieve Transaction Logs...
 - Clear Transaction Logs...
 - Save Advanced Logs...
 - Clear Advanced Logs...
 - Save All Logs...
 - Details...
 - Update Time/Date...
 - Advanced Logging...
 - Enable
 - Disable
- Power Options
- Upload Firmware...
- Remote Application Installation...

SAT Grid Changes (continued)


Display of Windows Defender Version

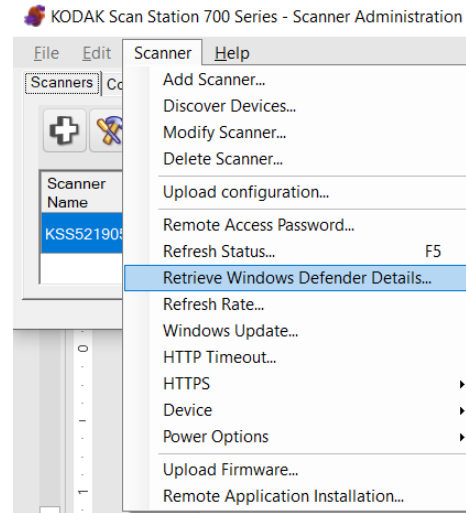
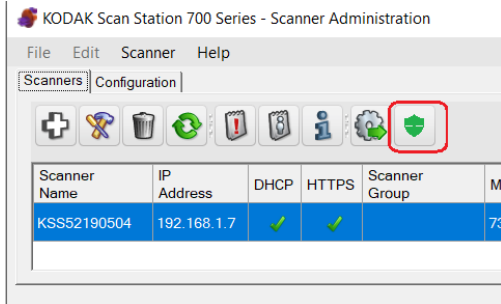
- The **Windows Defender version** along with the **date of the last update to Windows Defender** is now displayed on the Scanner Administration grid of Scan Stations
 - The display provides confirmation that Windows Security and Defender updates have been properly configured and are taking place on the SS730EX Plus machines

Scanner Name	IP Address	DHCP	HTTPS	Scanner Group	Model	Status	Last Command	Comment	Mac Address	Version	Windows Defender Version	Windows Defender Last Updated
KSS52190504	192.168.1.7	✓	✓		730EX Plus	Idle	Details - 1/11/2022 10:47:28 AM		7085C223EECD	1.5.68	1.355.1733.0	1/11/2022 3:00:52 AM

SAT Grid Changes (continued)

Display of Windows Defender Version (continued)

- The **Windows Defender version** and the **date of the last update to Windows Defender** is also displayed on the information screen  for the selected Scan Station
- The **Windows Defender information** for all SS730EX Plus machines on the SAT Grid can also be **manually retrieved** as necessary



192.168.1.7

KSS52190504

Page Count 43

Versions

Release	1.5.68
Embedded	1.1.8.3
Base	1.1.5.2
Setup Wizard	1.1.4.2
OS	3.2
Scanner Driver	6.3 (wiaentry: 5.2.0.0)
Windows Defender Version	1.355.1733.0
Windows Defender Last Updated	1/11/2022 3:00:52 AM
Fax	Yes
VC redistributable 2019	1.0
KaUpdates	1.4.1

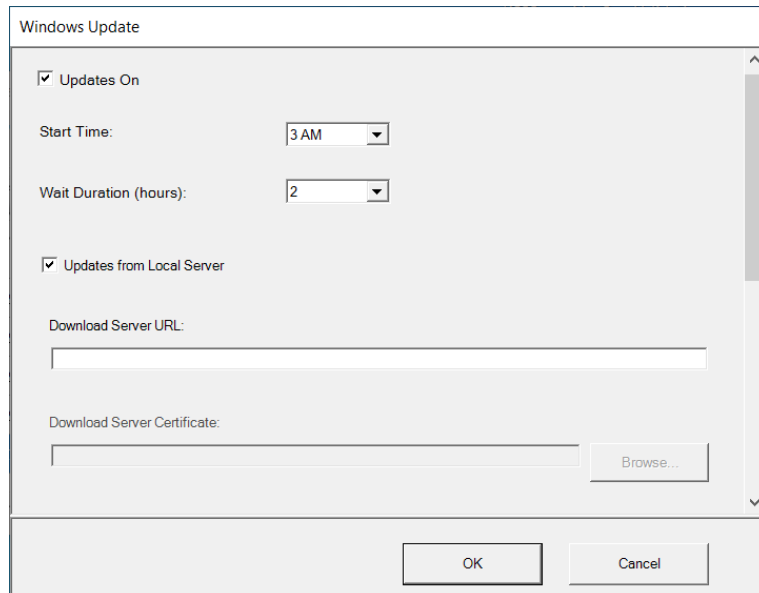
Network Information

Host Name	KSS52190504
Primary DNS Suffix	
Node Type	Hybrid
IP Routing Enabled	False
WINS Proxy Enabled	False

Windows Update Changes

Support for Local Windows Update Server

- Windows Security and Defender updates can now be configured to take place from the customer's local Windows Update server
- Select **Windows Update ...** from the Scanner Menu of the Scanner Administration Tool
- If using **HTTP**, the URLs must contain the server DNS name and not the IP address
 - **If an IP address is used, updates will not be applied.**



Windows Update

Updates On

Start Time: 3 AM

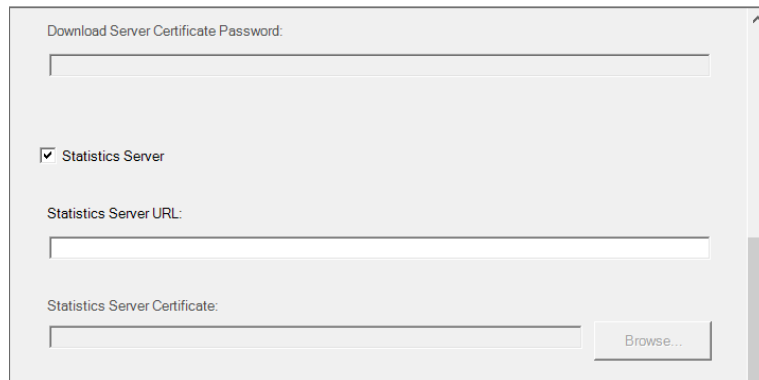
Wait Duration (hours): 2

Updates from Local Server

Download Server URL:

Download Server Certificate: Browse...

OK Cancel



Download Server Certificate Password:

Statistics Server

Statistics Server URL:

Statistics Server Certificate: Browse...

Active Directory Changes

Configurable Timeouts

- When the user is required to log onto the Scan Station with their Windows credentials, there are 2 timers that go into effect:
 - **Inactivity Timer:** When there is no user activity on the Scan Station, a message is displayed when the timer elapses warning the user that they will be logged off the Scan Station
 - **Logout Timer:** When there is no further user activity on the Scan Station after the Inactivity Timer elapses, the user's scan session will be terminated, and they will be logged off the Scan Station
- These timers are now configurable:
 - **Inactivity Timer:**
 - Specified in 30 second increments
 - Default is 30 seconds
 - Maximum is 1500 seconds (i.e., 25 minutes)
 - Cannot be greater than the Logout Timer
 - **Logout Timer:**
 - Specified in 1-minute increments
 - Default is 3 minutes
 - Maximum is 30 minutes

KODAK Scan Station 700 Series - Scanner Administration

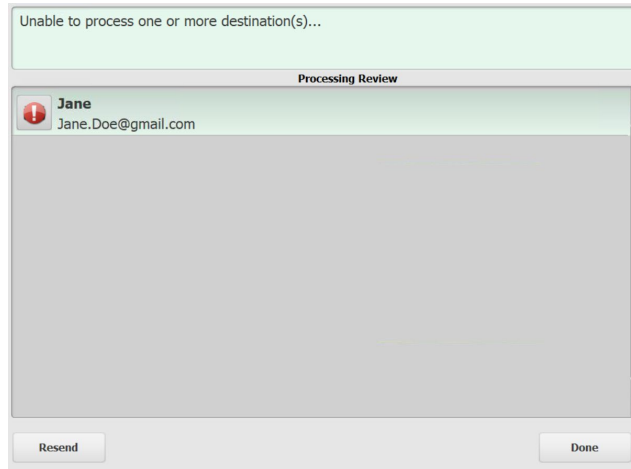
Device Settings

Full Name Field Tag:	displayname
Home Directory Tag:	HomeDirectory
Fax Field Tag:	facsimiletelephonenumber
Search Results To Return:	50
Security Type:	None
Force User Login:	<input checked="" type="checkbox"/>
Enable Force User Logout Time:	<input checked="" type="checkbox"/>
Inactivity Time (Seconds):	30
Force User Logout Time (Minutes):	3
User home directory:	<input type="checkbox"/>
User email address:	<input type="checkbox"/>
Allow Email Search:	<input type="checkbox"/>

Acknowledging Destination Output Errors

New Device->Configuration Option

- If the Scan Station fails to output the scanned documents to the configured destination, this new setting will display the failure message until the user acknowledges the error
- **Background processing** must be disabled
- If this setting is disabled, then the output failure message display will automatically be cleared from the scan station after 30 seconds



Device Settings

- ⌵ Network Destination Credentials
- ⌵ Network Information
- ⌵ Automatic Configuration Schedule
- ⌵ Volume (SS500 only)
- ⬆ Configuration Options

Select the items below that you want to restrict access to or enable:

- Allow sharepoint index field changes
- Log all transactions
- Background processing
- Run the Setup Wizard at next restart
- Enable output metadata
- Allow email selection in Jobs mode
- DocuShare compatible XML
- Show destination failure Processing Review window till user acknowledges

- ⌵ Date

Streamlined Scanning to Kofax Front Office Server

New Job Setting

- When the Scan Station Job configuration allows the user to make **Kofax Front Office Server index field changes**, this new setting will immediately start the scanning operation after the user enters the index data
- Other scan and destination option screens are bypassed

KODAK Scan Station 700 Series - Scanner Administration

Job

Step 1 of 6

Display job name
 Display image
 Display image and job name

Job Button Preview:

My Kofax Server

Always show preview at the end of scan job
 Allow Kofax Front Office Server index field changes
 Show Kofax index fields only by skipping other scan options

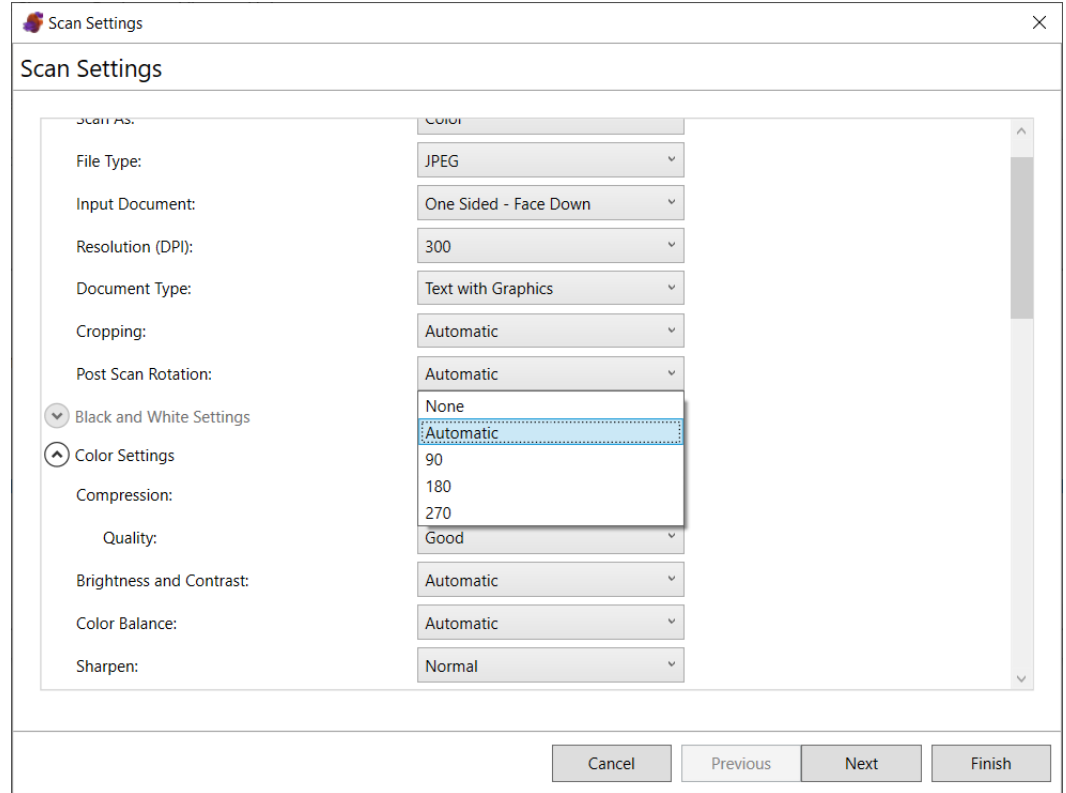
Kofax Front Office Server Input Index Values

<input type="checkbox"/>	DocName ●●● Waybill
<input type="checkbox"/>	BatchName ●●● Scanner26
<input type="checkbox"/>	ClientName ●●● ACME Insurance
<input type="checkbox"/>	CustomerID ●●●

Fixed Rotation Scan Settings

New Post-Scan Rotation Settings

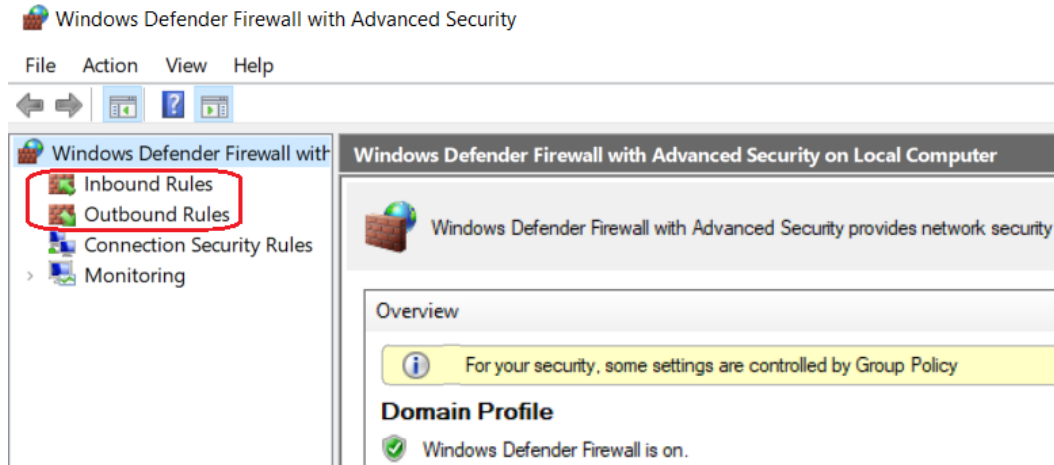
- Fixed rotation of 90, 180, and 270 degrees can now be configured in addition to Auto Orientation



Integrator Application Firewall Rules

Problem Fixed in 1.5.69 Release

- If an integrator has developed an application for the SS730EX Plus that configures **Firewall Rules**, these rules will not be disabled when upgrading the embedded Kodak Scan Station application to the 1.5.69 release



March 2021 Update

KODAK Scan Station Application

- Version **1.5.58**
- Optional Accessory **VC2019**

Scanner Administration Tool

- Version **1.4.34**

Summary

- Full support of **TLS 1.2**
- **Kofax Front Office Server** (KFOS) Destination Changes
- **Preview** Enhancements
- **DocuShare Index XML** Output

TLS 1.2 Support

Installation Notes

- For full support of **TLS 1.2** you must do the following to upgrade an existing SS730EX Plus (i.e., has an **OS Version of 3.2**):
 - Upgrade to or install **Version 1.4.34** of the Scanner Administration Tool (SAT)
 - Download the **VC2019 Accessory** to the Scan Station 730EX Plus
 - This will install the Visual C++ 2019 redistributables on the Scan Station
 - Upgrade your Scan Station 730EX Plus to **Version 1.5.58** of the KODAK Scan Station Application
 - **Detailed install instructions can be found at the end of these Release Notes**
- Version 1.4.34 of the SAT requires that your network and the PC running the SAT **has TLS 1.2 enabled**
- Version 1.5.58 of the KODAK Scan Station Application must only be applied to **Scan Station 730EX Plus** models
 - If you have older Scan Station models (e.g., SS710 or SS730EX), **DO NOT** download Version 1.5.58 or else they will become inoperable and will have to be replaced
- If your SS730EX Plus has an **OS Version of 3.3**, then the VC2019 Accessory does not need to be downloaded to the Scan Station as the Visual C++ 2019 redistributables are incorporated into the OS

KSS52191003

KSS52191003

Page Count 18

Versions

Release	1.5.58
Embedded	1.1.8.3
Base	1.1.5.2
Setup Wizard	1.1.4.2
OS	3.2
Scanner Driver	6.3 (wiaentry: 5.2.0.0)
VC redistributable 2019	1.0

Network Information

Host Name	KSS52191003
Primary DNS Suffix	
Node Type	Hybrid
IP Routing Enabled	False
WINS Proxy Enabled	False
DNS Suffix Search List	kodakalaris.net

Kofax Front Office Server (KFOS) Destination Changes

Support for KFOS Version 4.1 and later


- When configuring a KFOS destination, the complete KFOS service URL can now be entered
- As a result, connections to KFOS Version 4.1 and later can be established
- For example:

KFOS Version 4.0 URL:

<http://10.235.25.207:80/KFS/axis2/services>

KFOS Version 4.3 URL:

<http://10.235.25.207:80/Kofax/KFS/axis2/services>

 KODAK Scan Station 700 Series - Scanner Administration

Destinations

Description

My Kofax 4.0

Enter a Kofax Front Office Server Name/IP Address:

10.235.25.207

Port:

80

Enter a complete Kofax Front Office Server service URL:

<http://10.235.25.207:80/KFS/axis2/services>

Username:

Admin

Password:

•••••

Client ID (The device MAC address in this format xx-xx-xx-xx-xx-xx):

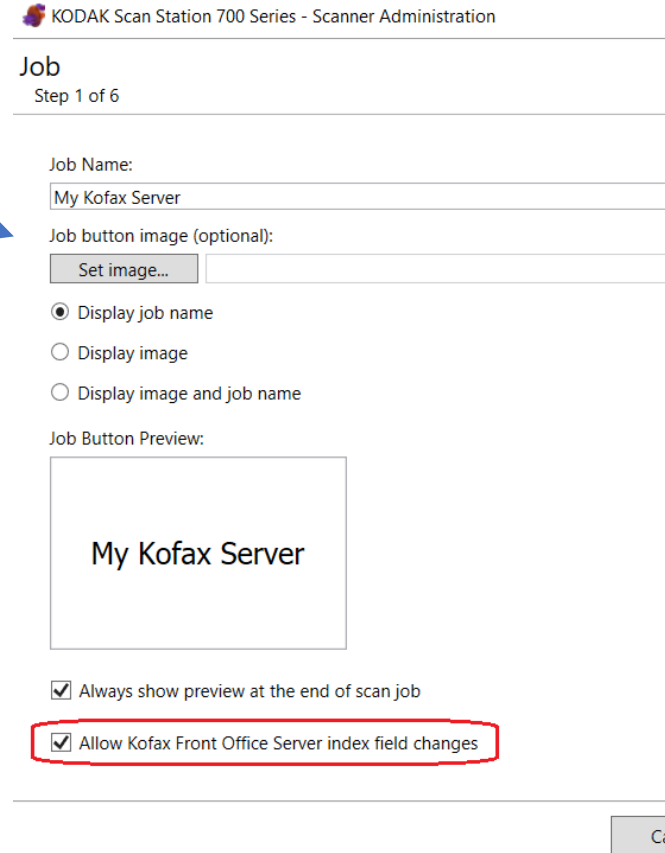
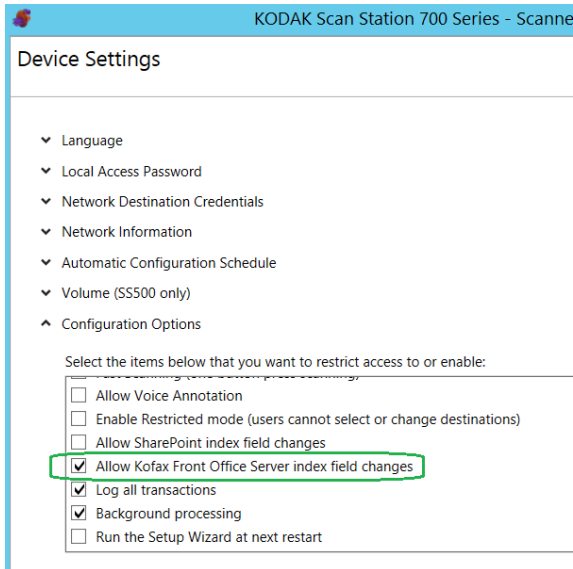
70-85-C2-23-EE-CD

Shortcut Type:

Kofax Front Office Server (KFOS) Destination Changes (continued)

Allow Kofax Front Office Server index field changes

- The option to allow the user to make changes to KFOS index fields is now configurable at the **Job level**
 - Previously, this option was configurable as part of the **Device->Configuration** options



Kofax Front Office Server (KFOS) Destination Changes (continued)

Allow Kofax Front Office Server index field changes (continued)

- If the KFOS index field is not configured with the **MFP** property, then it will not be displayed or available to the end user when they are prompted to make Kofax Front Office Server index field changes on the Scan Station

Form Type
Test KFOS1

*DocName
Waybill
 Masked Visibility: Thin Client MFP Mobile Summary

BatchName
 Masked Visibility: Thin Client MFP Mobile Summary

ClientName
 Masked Visibility: Thin Client MFP Mobile Summary

TestBatchName
 Masked Visibility: Thin Client MFP Mobile Summary

CustomerID
 Masked Visibility: Thin Client MFP

Kofax Front Office Server Input Index Values

<input type="checkbox"/>	DocName ●●●
	Waybill
<input type="checkbox"/>	BatchName ●●●
	Scanner26
<input type="checkbox"/>	ClientName ●●●
	ACME Insurance
<input type="checkbox"/>	CustomerID ●●●

Kofax Front Office Server (KFOS) Destination Changes (continued)

Active Directory User assigned to output documents

- If the SS730EX Plus is configured so that the user is required to log onto the Scan Station with their Active Directory credentials, then that **Username** will be used to connect to KFOS
- All scanned documents output to KFOS will be associated with that **Username**
- If the user is not forced to log onto the Scan Station, then the Username entered when configuring the KFOS Destination will be used instead:

Enter a complete Kofax Front Office Server service URL:


Username:

Password:

Username

Password

Domain



Preview Enhancements

Job option to always show Preview after scanning

- You now have the option to always go into the **Preview** screen after scanning documents initiated from a **Job tile** on the Scan Station

KODAK Scan Station 700 Series - Scanner Administration

Job

Step 1 of 6

Job Name:

Waybills

Job button image (optional):

Set image...

C:\Users\50242355\Documents\InfoInput\Training\2019Te

- Display job name
- Display image
- Display image and job name

Job Button Preview:



Always show preview at the end of scan job

Allow Kofax Front Office Server index field changes

Preview Enhancements (continued)

New Insert options

- In addition to being able to Rescan a page while in Preview mode, you can now **Insert Before** or **Insert After** the currently displayed page



123 456 897 1
Quote this shipment number in an inquiry

Kodak

express ship inc.
International Air Waybill

From		To	
Sender's Account Number 125498651	Credit/Check Number 8525	Receiver's Company Name City of Frankfurt	
Company Name Stevens Architects		For The Attention Of Charles Zen	
Street Address 888 Eighth Ave.		Street Address 41 Main St	
City Anywhere	State IL	City Frankfurt	
Country USA	Zip Code 02546	Country Germany	Zip Code 777621
Telephone Number 992-564-7285		Telephone Number 643-776-4212	
Dimensions 48 L x 4 W x 16 H		IMPORTANT Please check service required <input type="checkbox"/> GUARANTEED DELIVERY <input type="checkbox"/> 4-5 DAY SERVICE <input type="checkbox"/> 1ST PRIORITY SERVICE <input type="checkbox"/> 6-7 DAY SERVICE <input type="checkbox"/> INT'L EXPRESS SERVICE <input checked="" type="checkbox"/> STANDARD	
Description of Contents Blueprints		<input type="checkbox"/> Document <input checked="" type="checkbox"/> Package	
Value of Contents \$31600.00			
Sender's Signature <i>[Signature]</i>	Date 9/21/03	Recipient's Signature <i>[Signature]</i>	Date 9/30/03

FOR MORE INFORMATION CALL 800.234.3456



DocuShare Index XML Output


New Device->Configuration Option

- There is now an option to create a **DocuShare compatible output metadata XML file**
- The **<Name>** entry in the XML file will contain the name of the output document

```
<?xml version="1.0" encoding="UTF-8"?>
- <Metadata xmlns:xsd="http://www.w3.org/2001/XMLSchema"
  <Name>WO-256461.pdf</Name>
  <JobName>Job - 04/07/2021 16:18:51</JobName>
  - <DeviceSettings>
    <DeviceName>KSS52191003</DeviceName>
    <IPAddress/>
```

- The XML file will have the same name as the output document

Name	Date modified
 WO-256461.pdf	4/7/2021 4:19 PM
 WO-256461.xml	4/7/2021 4:19 PM

 KODAK Scan Station 700 Series - Scanner Administration

Device Settings

- Local Access Password
- Network Destination Credentials
- Network Information
- Automatic Configuration Schedule
- Volume (SS500 only)
- Configuration Options

Select the items below that you want to restrict access to or enable:

- Enable restricted mode (users cannot select or change destinations)
- Allow SharePoint index field changes
- Log all transactions
- Background processing
- Run the Setup Wizard at next restart
- Enable output metadata
- Allow email selection in Jobs mode
- DocuShare compatible XML

Initial Release Information (March 2020)

KODAK Scan Station Application

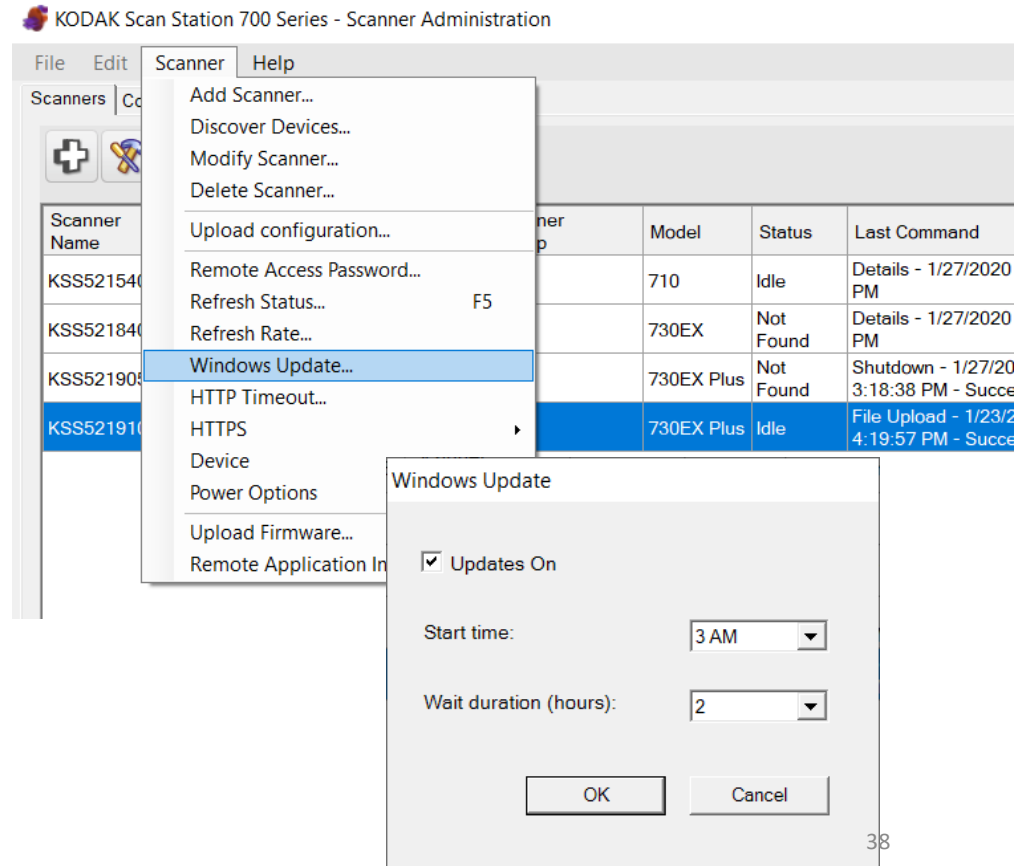
- Version 1.5.40
- Includes the latest scanner drivers and flatbed driver support
 - Scanner Driver Patch 4.6
 - Flatbed Image Processing Patch 4.0

Scanner Administration Tool

- Version 1.4.23

Scanner Administration Tool Updates – Version 1.4.23

- The updated **Scanner Administration Tool (SAT)** will support all SS700 Scan Stations including SS710, SS730EX, and SS730EX Plus
 - Existing SS710/SS730EX customers who add SS730EX Plus scanners to their fleet should upgrade to **Version 1.4.23** of the SAT Tool
- Ability to change **Windows Security Update configuration** is only available for the SS730EX Plus
 - Wait duration** is the amount of time the system will wait for any security updates to be applied before going back into Power Saver mode.



Scanner Administration Tool Updates – Version 1.4.23 (continued)

- In order for the Scanner Administration Tool to work with and **Add** an SS730EX Plus, the PC's Local Security Policy for **LAN Manager Authentication Level** must be set to **NTLmv2**
 - Customers should work with their IT organization to review and modify this setting as necessary

The screenshot displays the Windows Security Settings application. The left-hand navigation pane shows the hierarchy: Security Settings > Local Policies > Security Options. The main pane lists various network security policies. The policy 'Network security: LAN Manager authentication level' is selected and highlighted in blue. A context menu is open over this policy, with 'Properties' and 'Help' options visible. To the right, a separate window titled 'Network security: LAN Manager authentication level' is open, showing the 'Local Security Setting' tab. The current setting is 'Send NTLM response only', and a dropdown menu is open, showing several options. The option 'Send NTLMv2 response only' is selected and highlighted in blue.

Policy	Security Setting
Network access: Shares that can be accessed anonymously	Not Defined
Network access: Sharing and security model for local accounts	Classic - local users auth...
Network security: Allow Local System to use computer identity for NTLM	Not Defined
Network security: Allow LocalSystem NULL session fallback	Not Defined
Network security: Allow PKU2U authentication requests to this computer to use online identities.	Not Defined
Network security: Configure encryption types allowed for Kerberos	
Network security: Do not store LAN Manager hash value on next password change	
Network security: Force logoff when logon hours expire	
Network security: LAN Manager authentication level	Send NTLMv2 response only
Network security: LDAP client signing requirements	
Network security: Minimum session security for NTLM SSP based (including secure RPC) servers	
Network security: Minimum session security for NTLM SSP based (including secure RPC) servers	
Network security: Restrict NTLM: Add remote server exceptions for NTLM authentication	
Network security: Restrict NTLM: Add server exceptions in this domain	
Network security: Restrict NTLM: Audit Incoming NTLM Traffic	
Network security: Restrict NTLM: Audit NTLM authentication in this domain	

Network security: LAN Manager authentication level

Local Security Setting Explain

Network security: LAN Manager authentication level

Send NTLM response only

Send LM & NTLM responses

Send LM & NTLM - use NTLMv2 session security if negotiated

Send NTLM response only

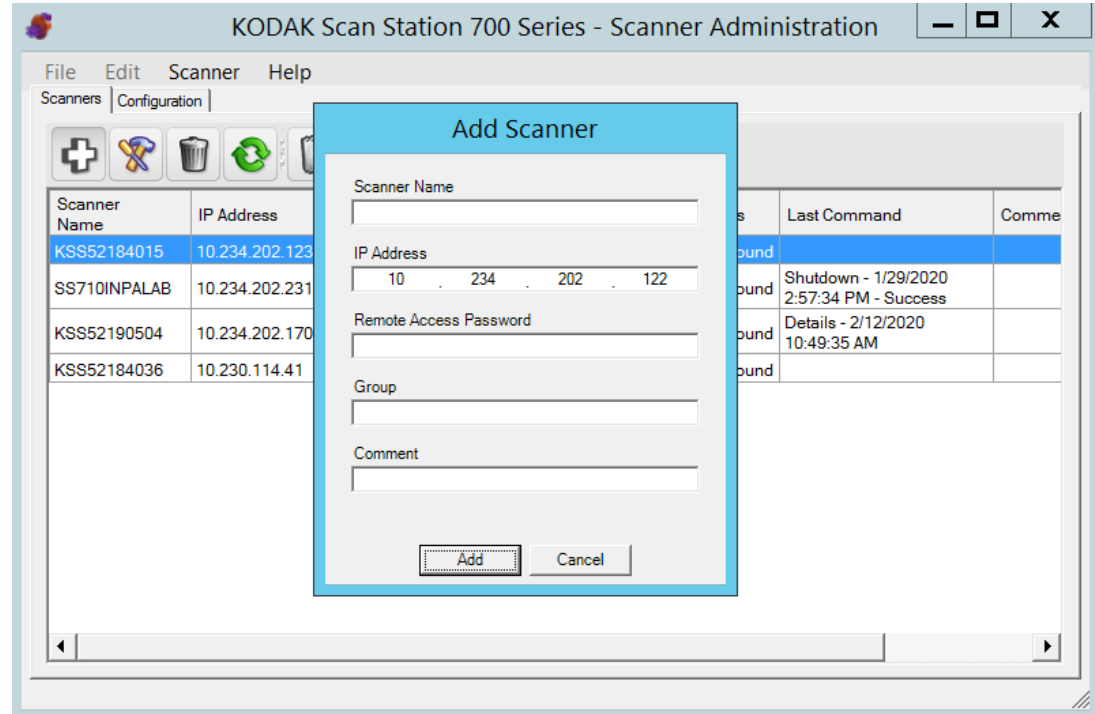
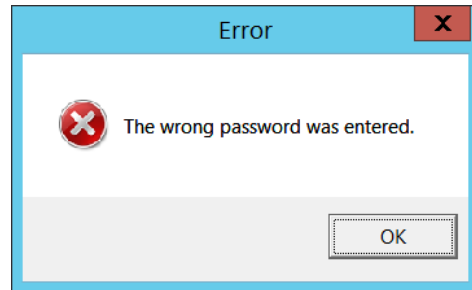
Send NTLMv2 response only

Send NTLMv2 response only. Refuse LM

Send NTLMv2 response only. Refuse LM & NTLM

Scanner Administration Tool Updates – Version 1.4.23 (continued)

If the user's PC is not configured for NTLMv2, they will get the following message when attempting to **Add** the SS730EX Plus machine:



Detailed Install Instructions for SS730EX Plus

January 2022 Release

Scan Station devices support upgrade to a new embedded release (KSSUpdate.exe) by following one of the five supported methods mentioned in the Admin guide.

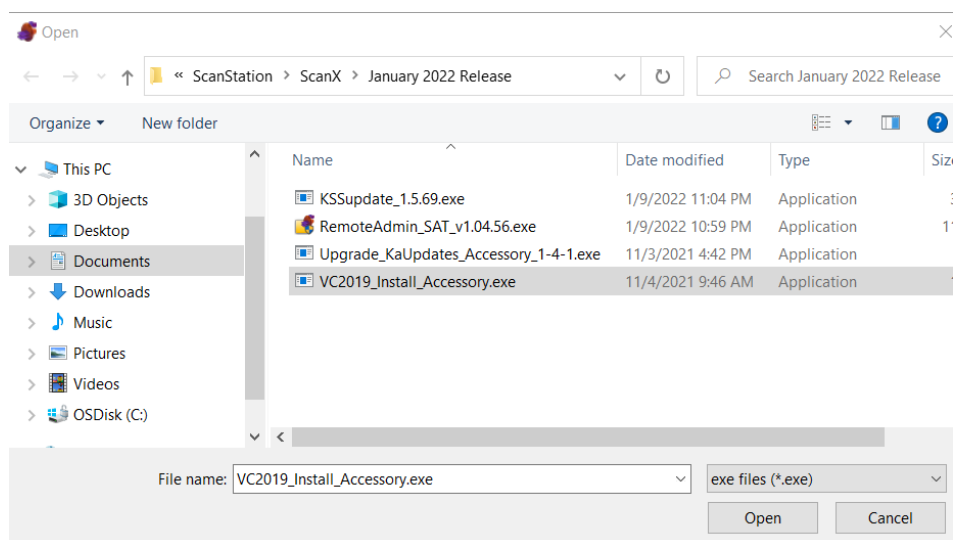
However, to update an SS730EX Plus scan station device to embedded release 01.05.69.00 and above, two accessory packages need to be installed as pre-requisites. These accessories will provide full support for the TLS 1.2 protocol along with providing the ability to perform Windows Security Updates from a local Windows update server. Follow the given steps to install accessory packages **VC2019_Install_Accessory.exe** and **Upgrade_KaUpdates_Accessory_1-4-1.exe** and to update the Scan Station device to embedded release package 01.05.69.00 and above.

A) Steps to install pre-requisite Accessory packages using Scanner Administrator application

1. Ensure Scanner Administrator application (SAT) version 01.04.56 and above is installed.
2. From the Scanners tab, select the Scan Station(s) from the grid view that you want to update to latest release 01.05.69 and above.

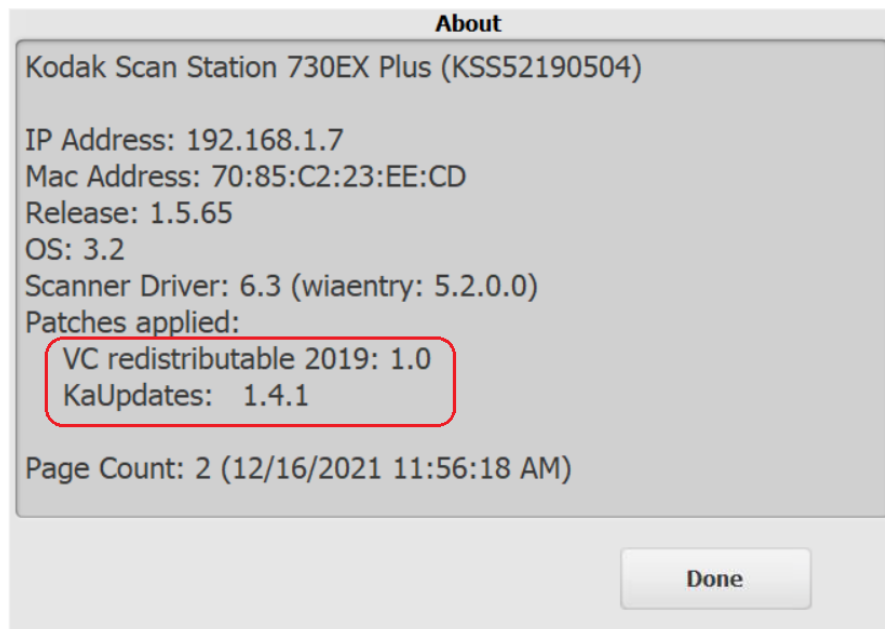
NOTE: To select more than one Scan Station, use the Ctrl or Shift key and click the mouse button. The selected Scan Stations will be highlighted.

3. Select Scanner menu → Upload Firmware. The Open dialog box will be displayed as below. Navigate to the directory where you have downloaded the Accessory packages.



4. Select the file accessory package “**VC2019_Install_Accessory.exe**” and click Open. This accessory package will install Microsoft Visual C++ Redistributable 2019.
5. The message, “Uploading, Please wait” will be displayed while the file is being uploaded.

6. Once the upload to the Scan Station device is completed, then the Scan Station application will install that accessory package. During that point Scan Station device will show “Please wait while Software is being installed...” message dialog.
7. Once the accessory package is installed, the Scan Station device will be rebooted automatically.
8. When the Scan Station device is powered up, select again Scanner->Upload Firmware and select the file accessory package “**Upgrade_KaUpdates_Accessory_1-4-1.exe**”.
9. The message, “Uploading, Please wait” will be again displayed while the file is being uploaded.
10. Once the upload to the Scan Station device is completed, then the Scan Station application will install the accessory package. During that point Scan Station device will show “Please wait while Software is being installed...” message dialog.
11. Once the second accessory package is installed, the Scan Station device will be rebooted automatically.
12. Once the Scan Station device is powered up, in the information dialog you will see **Patches applied** section as in below screenshot.

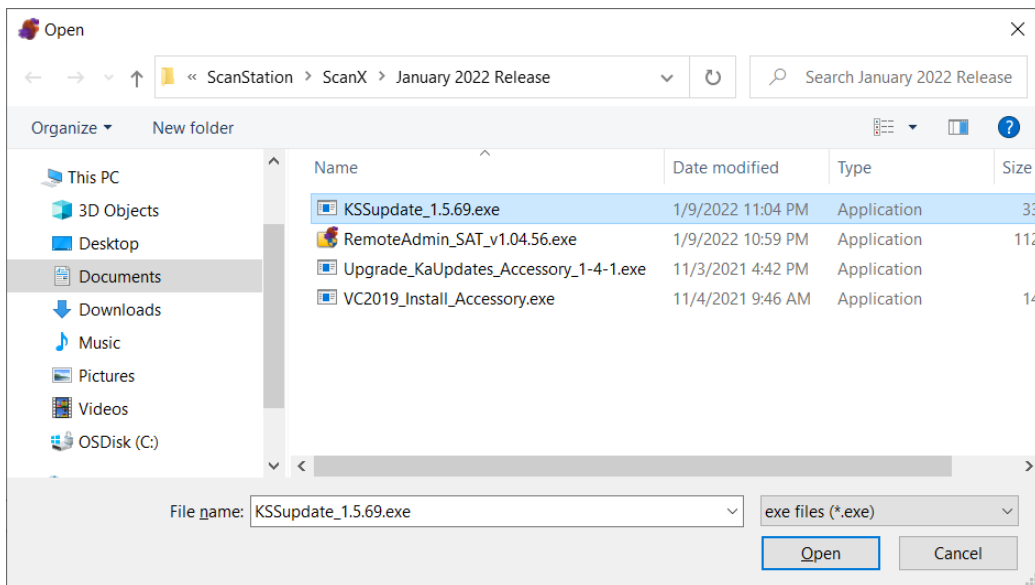


Note that for a selected scanner the release version of installed patches can be seen from the Scanner Administration program on the device details page which is launched by clicking on the “Details...” option from **Scanner Menu** → **Device**.


Now the device is ready for upgrading latest embedded software using KSSUpdate_1.5.69.exe

B) Steps to update latest embedded software using KSSUpdate 1.5.69.exe from Scanner Administrator application:

1. Select the Scan Station(s) where you want to send the new embedded software.
NOTE: To select more than one Scan Station, use the Ctrl or Shift key and click the mouse button. The selected Scan Stations will be highlighted.
2. Select Scanner menu → Upload Firmware. The Open dialog box will be displayed. Navigate to the directory where you have downloaded the KSSUpdate package.



3. Browse and Select the file “**KSSUpdate_1.5.69.exe**” and click Open.
4. The message “Uploading, Please wait” will be displayed while the file is being uploaded.
5. Once the upload to the Scan Station device is completed, then the embedded software application will be installed on the Scan Station. During that point Scan Station device will show “Please wait while Software is being installed...” message dialog.
6. Once the installation is completed then the device will be rebooted automatically.

Upon power up or reboot, you can check the release version on the information dialog by clicking on the information icon  from the Scan Station touchscreen:

