

SS730EX Plus

Release Notes
March 2021

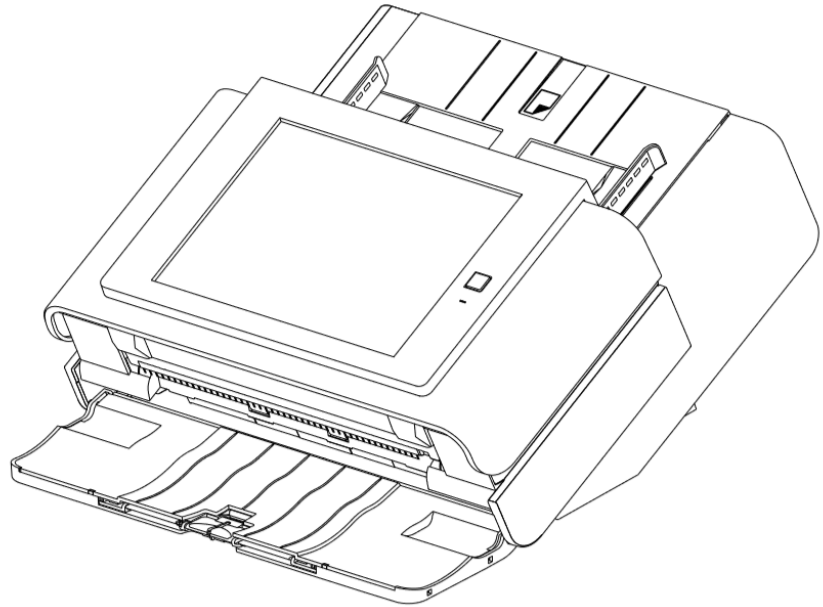


Table of Contents

- Introduction
- Scan Station Portfolio Overview
- Specifications
- Scan Station 730EX Plus Security
- Windows Security Updates on the SS730EX Plus
- Initial Release Information (March 2020)
 - Scanner Administration Tool (SAT) Updates – Version 1.4.23
- March 2021 Updates
 - Scanner Administration Tool - Version 1.4.34
 - Kodak Scan Station Application – Release 1.5.58

Windows 10 Scan Station

- The **Scan Station 730EX Plus** is the current model of the Scan Station, leveraged from the existing Scan Station 710 and 730EX with the internal operating system updated to **Windows 10 IoT Enterprise LTSC 2019 version**
- The **Windows 10 IoT version** was chosen because with this version Microsoft will only provide updates to security related features
 - This eliminates the risk of Microsoft feature updates affecting the Kodak or custom scanning applications
- Certified to Energy Star 3.0

Scan Station Portfolio

Older Models (Sales Discontinued)	PPM	Flatbed Accessary	Duty Cycle	Operating System	TLS Support	Note:
Scan Station 710	70	Y	6K	Win 8.0	1.0 only	No 3 rd party Integrations
Scan Station 730EX	70	Y	6K	Win 8.1	1.0, 1.1, 1.2	3 rd party Integrations Allowed

Current Model	PPM	Flatbed Accessary	Duty Cycle	Operating System	TLS Support	Note:
Scan Station 730EX Plus	70	Y	6K	Win 10 IoT	1.1 and 1.2	Kodak Scan Station application and 3 rd party Integrations Allowed

Pages Per Minute for all Scan Stations:

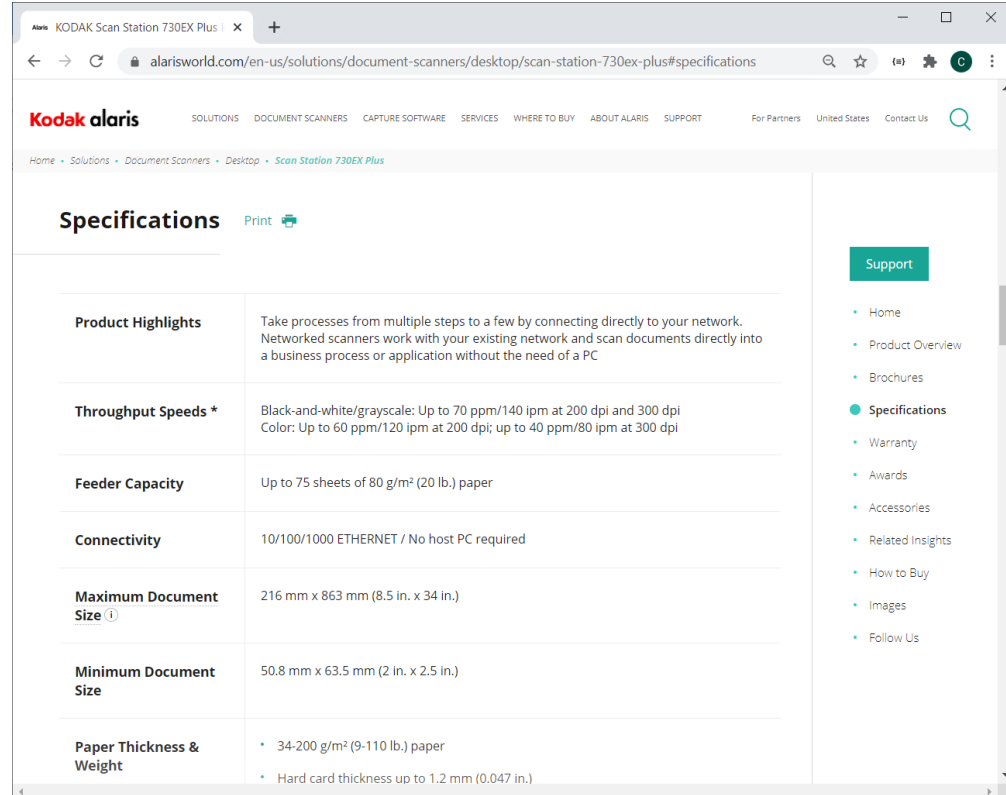
- B&W/Gray: 70ppm at 200 or 300 DPI
- Color 200: 60ppm
- Color 300: 40ppm

Specifications

The **Scan Station 730EX Plus** Specifications (Hardware and KODAK Scan Station application capabilities) have not changed from the SS710 and SS730EX with the exception of the Windows 10 embedded operating system

Specifications can be found on the web at:

<https://www.alarisworld.com/en-us/solutions/document-scanners/desktop/scan-station-730ex-plus#Specifications>



The screenshot shows the product specifications page for the Kodak Scan Station 730EX Plus on the Alaris website. The page features a navigation bar with links for Solutions, Document Scanners, Capture Software, Services, Where to Buy, About Alaris, and Support. A breadcrumb trail indicates the path: Home > Solutions > Document Scanners > Desktop > Scan Station 730EX Plus. The main content area is titled 'Specifications' and includes a 'Print' button. A table lists the following specifications:

Product Highlights	Take processes from multiple steps to a few by connecting directly to your network. Networked scanners work with your existing network and scan documents directly into a business process or application without the need of a PC
Throughput Speeds *	Black-and-white/grayscale: Up to 70 ppm/140 ipm at 200 dpi and 300 dpi Color: Up to 60 ppm/120 ipm at 200 dpi; up to 40 ppm/80 ipm at 300 dpi
Feeder Capacity	Up to 75 sheets of 80 g/m ² (20 lb.) paper
Connectivity	10/100/1000 ETHERNET / No host PC required
Maximum Document Size ⓘ	216 mm x 863 mm (8.5 in. x 34 in.)
Minimum Document Size	50.8 mm x 63.5 mm (2 in. x 2.5 in.)
Paper Thickness & Weight	<ul style="list-style-type: none">• 34-200 g/m² (9-110 lb.) paper• Hard card thickness up to 1.2 mm (0.047 in.)

On the right side of the page, there is a 'Support' section with a list of links: Home, Product Overview, Brochures, Specifications (highlighted), Warranty, Awards, Accessories, Related Insights, How to Buy, Images, and Follow Us.

Scan Station 730EX Plus Security

The Scan Station 700 Plus Series is configured to prevent external attacks from the Internet and from direct access by users. The following security features will block access to the Scan Station's operating system:

- **Microsoft Windows Security updates**
 - The Windows update service is turned on by default in the 700EX Plus Series
 - The scanner will check for security updates and apply them as needed
- **Microsoft Windows Defender**
 - The Windows Defender service is always updating and running on the 700EX Plus Series. The service will ensure security through:
 - Anti-virus checking
 - Verification that installed applications are signed
- The Scan Station uses a **firewall** and blocks nearly all incoming network traffic
 - Most inbound ports are blocked and will not respond to queries from the network
- The Scan Station is also configured to respond to an echo (also known as a *ping*)
 - This can be useful for diagnosing connectivity issues

Scan Station 730EX Plus Security (continued)

Continuation of security features that will block access to the Scan Station's operating system:

- The Scan Station is **protected from external intrusions** via the Scan Station USB ports
 - The operating system is configured to disable any auto-run action that could occur when presenting a new USB device to the system
 - The Scan Station recognizes the presence of a USB removable device, but will only open and read files that have been created and encrypted specifically for use by the Scan Station
 - Any file found on a removable device that is not properly encrypted will be ignored
 - This makes it almost impossible to introduce a virus by inserting a removable device with an infected executable.
- Viruses frequently find their way into a network-connected computer via email. Most viruses are spread as email attachments and infect a computer after the email has been opened and the attachment executed.
 - The Scan Station does not receive any incoming emails, therefore, it cannot be infected in this manner.
- The Scan Station will only read a **valid, encrypted configuration file**
- The **underlying operating system is not available** to the administrator or user.
 - Updates to the operating system and/or the Scan Station firmware will be made available on the Kodak Alaris website as needed

Scan Station 730EX Plus Security (continued)

Continuation of security features that will block access to the Scan Station's operating system:

- To help secure the Scan Station, the customer can set up a **Remote Access Password** and/or a **Local Access Password**
 - The **Remote Access Password** protects the Scan Station from being modified by another (unauthorized) installation of the Scanner Administration Tool
 - The **Local Access Password** prevents a walk-up user from modifying the Scan Station via a USB removable device
- **Notes:**
 - A Remote or Local Access Password that is lost or forgotten may be able to be recovered by the Alaris Service and Support organization.
 - The Service case that is established must be escalated to **Level 3 Support in Rochester** for assistance
- The customer can configure the Scan Station to **require a user to log in** before scanning

Windows Security Updates on the 730EX Plus

- The new 730EX Plus scanner will (by default) automatically apply **Windows Security Updates** to the operating system.
 - Microsoft Windows Feature Updates will not be applied
- The scanner will attempt to connect to the public Microsoft Update server daily to download **security updates**.
 - Local update servers are not currently supported
- Any security updates that have been downloaded will, by default, be applied at 3:00am local time
 - If the Scan Station is in Power Saver mode at that time, it will get woken up
 - Security updates (if available) may also be applied upon reboot of the Scan Station
- Can only be enabled/disabled from the Scanner Administration Tool (SAT)
 - Can not be enabled/disabled from the Scan Station itself
 - The time at which to apply any Security Updates (that have been downloaded) is also be configurable

Windows Security Updates on the 730EX Plus (continued)

- If the end user is present when the Windows security update is taking place they will likely see the following during the updates:



Initial Release Information (March 2020)

KODAK Scan Station Application

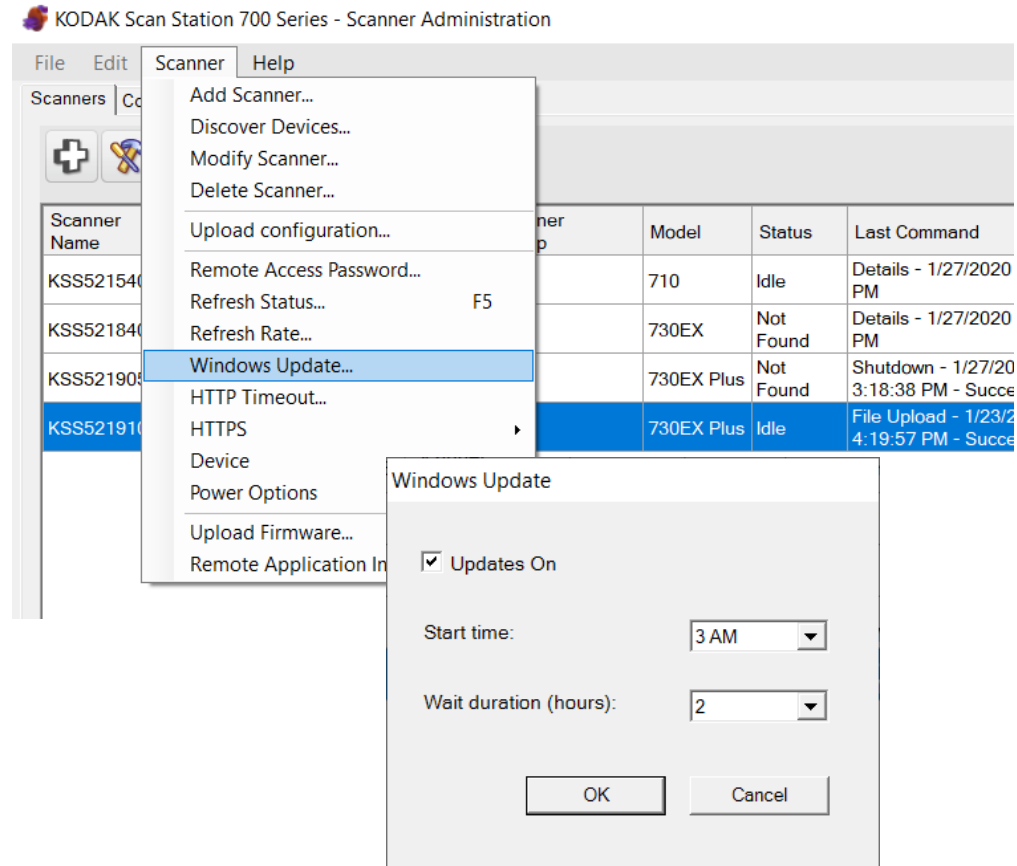
- Version 1.5.40
- Includes the latest scanner drivers and flatbed driver support
 - Scanner Driver Patch 4.6
 - Flatbed Image Processing Patch 4.0

Scanner Administration Tool

- Version 1.4.23

Scanner Administration Tool Updates – Version 1.4.23

- The updated **Scanner Administration Tool (SAT)** will support all SS700 Scan Stations including SS710, SS730EX, and SS730EX Plus
 - Existing SS710/SS730EX customers who add SS730EX Plus scanners to their fleet should upgrade to **Version 1.4.23** of the SAT Tool
- Ability to change **Windows Security Update configuration** is only available for the SS730EX Plus
 - **Wait duration** is the amount of time the system will wait for any security updates to be applied before going back into Power Saver mode.



Scanner Administration Tool Updates – Version 1.4.23 (continued)

- In order for the Scanner Administration Tool to work with and **Add** an SS730EX Plus, the PC's Local Security Policy for **LAN Manager Authentication Level** must be set to **NTLMv2**
 - Customers should work with their IT organization to review and modify this setting as necessary

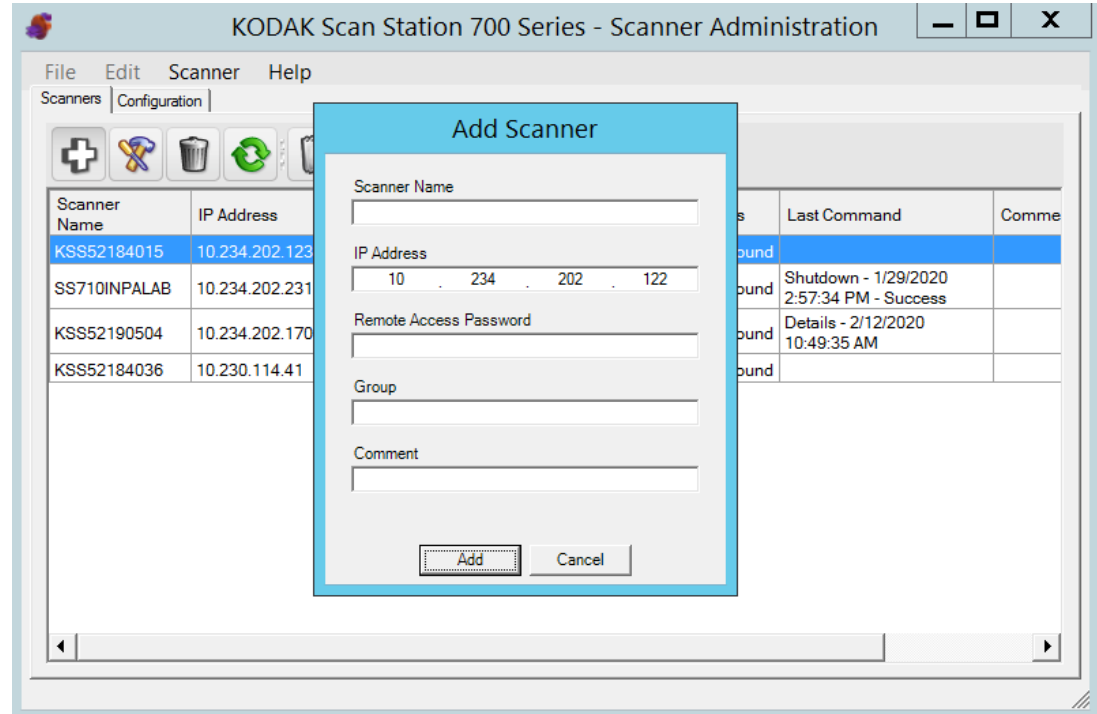
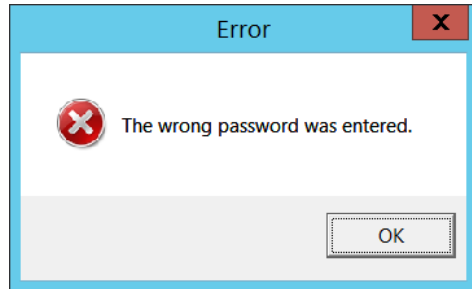
The screenshot displays the Windows Security Settings application. On the left, the navigation pane shows 'Security Settings' expanded to 'Local Policies' > 'Security Options'. The main pane lists various security policies. The policy 'Network security: LAN Manager authentication level' is selected and highlighted in blue. A context menu is open over this policy, with 'Properties' and 'Help' options visible. To the right, a separate window titled 'Network security: LAN Manager authentication level' is open, showing the 'Local Security Setting' tab. The policy name is displayed at the top, and a dropdown menu below it shows the current setting: 'Send NTLMv2 response only'. Other options in the dropdown include 'Send LM & NTLM responses', 'Send LM & NTLM - use NTLMv2 session security if negotiated', 'Send NTLM response only', 'Send NTLMv2 response only. Refuse LM', and 'Send NTLMv2 response only. Refuse LM & NTLM'.

Policy	Security Setting
Network access: Shares that can be accessed anonymously	Not Defined
Network access: Sharing and security model for local accounts	Classic - local users auth...
Network security: Allow Local System to use computer identity for NTLM	Not Defined
Network security: Allow LocalSystem NULL session fallback	Not Defined
Network security: Allow PKU2U authentication requests to this computer to use online identities.	Not Defined
Network security: Configure encryption types allowed for Kerberos	
Network security: Do not store LAN Manager hash value on next password change	
Network security: Force logoff when logon hours expire	
Network security: LAN Manager authentication level	
Network security: LDAP client signing requirements	
Network security: Minimum session security for NTLM SSP based (i	
Network security: Minimum session security for NTLM SSP based (including secure RPC) servers	
Network security: Restrict NTLM: Add remote server exceptions for NTLM authentication	
Network security: Restrict NTLM: Add server exceptions in this domain	
Network security: Restrict NTLM: Audit Incoming NTLM Traffic	
Network security: Restrict NTLM: Audit NTLM authentication in this domain	

© 2021 Kodak Alaris Inc.

Scanner Administration Tool Updates – Version 1.4.23 (continued)

If the user's PC is not configured for NTLMv2, they will get the following message when attempting to **Add** the SS730EX Plus machine:



March 2021 Update

KODAK Scan Station Application

- Version **1.5.58**
- Optional Accessory **VC2019**

Scanner Administration Tool

- Version **1.4.34**

Summary

- Full support of **TLS 1.2**
- **Kofax Front Office Server** (KFOS) Destination Changes
- **Preview** Enhancements
- **DocuShare Index XML** Output

TLS 1.2 Support

Installation Notes

- For full support of **TLS 1.2** you must do the following to upgrade an existing SS730EX Plus (i.e., has an **OS Version of 3.2**):
 - Upgrade to or install **Version 1.4.34** of the Scanner Administration Tool (SAT)
 - Download the **VC2019 Accessory** to the Scan Station 730EX Plus
 - This will install the Visual C++ 2019 redistributables on the Scan Station
 - Upgrade your Scan Station 730EX Plus to **Version 1.5.58** of the KODAK Scan Station Application
 - **Detailed install instructions can be found at the end of these Release Notes**
- Version 1.4.34 of the SAT requires that your network and the PC running the SAT **has TLS 1.2 enabled**
- Version 1.5.58 of the KODAK Scan Station Application must only be applied to **Scan Station 730EX Plus** models
 - If you have older Scan Station models (e.g., SS710 or SS730EX), **DO NOT** download Version 1.5.58 or else they will become inoperable and will have to be replaced
- If your SS730EX Plus has an **OS Version of 3.3**, then the VC2019 Accessory does not need to be downloaded to the Scan Station as the Visual C++ 2019 redistributables are incorporated into the OS

KSS52191003

KSS52191003

Page Count 18

Versions

Release	1.5.58
Embedded	1.1.8.3
Base	1.1.5.2
Setup Wizard	1.1.4.2
OS	3.2
Scanner Driver	6.3 (wiaentry: 5.2.0.0)
VC redistributable 2019	1.0

Network Information

Host Name	KSS52191003
Primary DNS Suffix	
Node Type	Hybrid
IP Routing Enabled	False
WINS Proxy Enabled	False
DNS Suffix Search List	kodakalaris.net

Kofax Front Office Server (KFOS) Destination Changes

Support for KFOS Version 4.1 and later


- When configuring a KFOS destination, the complete KFOS service URL can now be entered
- As a result, connections to KFOS Version 4.1 and later can be established
- For example:

KFOS Version 4.0 URL:

<http://10.235.25.207:80/KFS/axis2/services>

KFOS Version 4.3 URL:

<http://10.235.25.207:80/Kofax/KFS/axis2/services>

 KODAK Scan Station 700 Series - Scanner Administration

Destinations

Description

My Kofax 4.0

Enter a Kofax Front Office Server Name/IP Address:

10.235.25.207

Port:

80

Enter a complete Kofax Front Office Server service URL:

<http://10.235.25.207:80/KFS/axis2/services>

Username:

Admin

Password:

•••••

Client ID (The device MAC address in this format xx-xx-xx-xx-xx-xx):

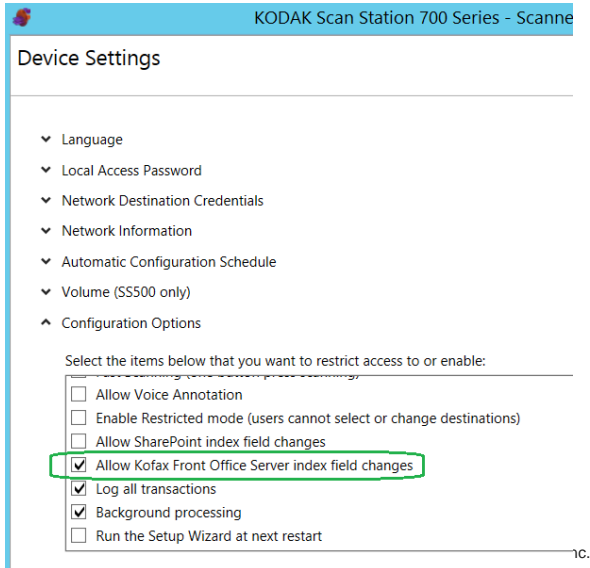
70-85-C2-23-EE-CD

Shortcut Type:

Kofax Front Office Server (KFOS) Destination Changes (continued)

Allow Kofax Front Office Server index field changes

- The option to allow the user to make changes to KFOS index fields is now configurable at the **Job level**
 - Previously, this option was configurable as part of the **Device->Configuration** options



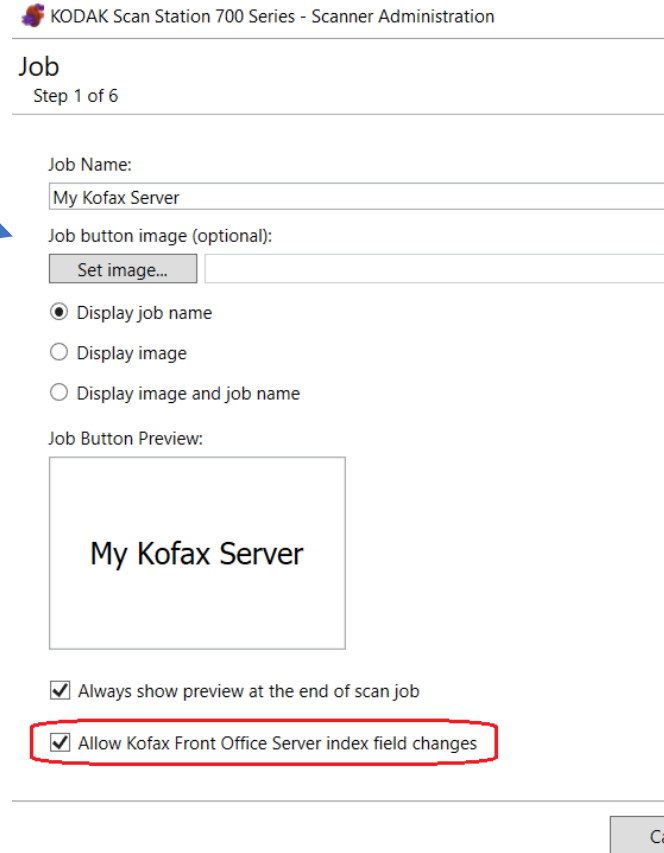
KODAK Scan Station 700 Series - Scanner Administration

Device Settings

- Language
- Local Access Password
- Network Destination Credentials
- Network Information
- Automatic Configuration Schedule
- Volume (SS500 only)
- Configuration Options

Select the items below that you want to restrict access to or enable:

- Allow Voice Annotation
- Enable Restricted mode (users cannot select or change destinations)
- Allow SharePoint index field changes
- Allow Kofax Front Office Server index field changes
- Log all transactions
- Background processing
- Run the Setup Wizard at next restart



KODAK Scan Station 700 Series - Scanner Administration

Job

Step 1 of 6

Job Name:
My Kofax Server

Job button image (optional):
Set image...

Display job name
 Display image
 Display image and job name

Job Button Preview:
My Kofax Server

Always show preview at the end of scan job
 Allow Kofax Front Office Server index field changes

Kofax Front Office Server (KFOS) Destination Changes (continued)

Allow Kofax Front Office Server index field changes (continued)

- If the KFOS index field is not configured with the **MFP** property, then it will not be displayed or available to the end user when they are prompted to make Kofax Front Office Server index field changes on the Scan Station

Form Type
Test KFOS1

*DocName
Waybill
 Masked Visibility: Thin Client MFP Mobile Summary

BatchName
 Masked Visibility: Thin Client MFP Mobile Summary

ClientName
 Masked Visibility: Thin Client MFP Mobile Summary

TestBatchName
 Masked Visibility: Thin Client MFP Mobile Summary

CustomerID
 Masked Visibility: Thin Client MFP

Kofax Front Office Server Input Index Values

DocName ●●●
Waybill

BatchName ●●●
Scanner26

ClientName ●●●
ACME Insurance

CustomerID ●●●

Kofax Front Office Server (KFOS) Destination Changes (continued)

Active Directory User assigned to output documents

- If the SS730EX Plus is configured so that the user is required to log onto the Scan Station with their Active Directory credentials, then that **Username** will be used to connect to KFOS
- All scanned documents output to KFOS will be associated with that **Username**
- If the user is not forced to log onto the Scan Station, then the Username entered when configuring the KFOS Destination will be used instead:

Enter a complete Kofax Front Office Server service URL:


Username:

Password:

Username

Password

Domain



Preview Enhancements

Job option to always show Preview after scanning

- You now have the option to always go into the **Preview** screen after scanning documents initiated from a **Job tile** on the Scan Station

Job

Step 1 of 6

Job Name:

Waybills

Job button image (optional):

Set image...

C:\Users\50242355\Documents\InfoInput\Training\2019Te

- Display job name
- Display image
- Display image and job name

Job Button Preview:



- Always show preview at the end of scan job
- Allow Kofax Front Office Server index field changes

Preview Enhancements (continued)

New Insert options

- In addition to being able to Rescan a page while in Preview mode, you can now **Insert Before** or **Insert After** the currently displayed page



123 456 897 1
Quote this shipment number in an inquiry

Kodak

express ship inc.
International Air Waybill

From		To	
Sender's Account Number 125498651	Credit/Check Number 8525	Receiver's Company Name City of Frankfurt	
Company Name Stevens Architects		For The Attention Of Charles Zen	
Street Address 888 Eighth Ave.		Street Address 41 Main St	
City Anywhere	State IL	City Frankfurt	
Country USA	Zip Code 02546	Country Germany	Zip Code 777621
Telephone Number 992-564-7285		Telephone Number 643-776-4212	
Dimensions 48 L x 4 W x 16 H		IMPORTANT Please check service required	PREMIUM AND OTHER SERVICES
Description of Contents Blueprints		<input type="checkbox"/> GUARANTEED DELIVERY	<input type="checkbox"/> 4-5 DAY SERVICE
Value of Contents \$31600.00		<input type="checkbox"/> 1ST PRIORITY SERVICE	<input type="checkbox"/> 6-7 DAY SERVICE
Sender's Signature <i>[Signature]</i>	Date 9/21/03	<input type="checkbox"/> INT'L EXPRESS SERVICE	<input checked="" type="checkbox"/> STANDARD
		Recipient's Signature <i>[Signature]</i>	Date 9/30/03

FOR MORE INFORMATION CALL 800.234.3456

A horizontal toolbar with several icons: a magnifying glass with a plus sign, a magnifying glass with a minus sign, a document icon with a green arrow pointing to another document, a trash can, a green circular arrow, a green circular arrow with a document icon, and two blue double-headed arrows. A green checkmark icon is also present on the right side.



DocuShare Index XML Output

New Device->Configuration Option

- There is now an option to create a **DocuShare compatible output metadata XML file**
- The **<Name>** entry in the XML file will contain the name of the output document

```
<?xml version="1.0" encoding="UTF-8"?>
- <Metadata xmlns:xsd="http://www.w3.org/2001/XMLSchema"
  <Name>WO-256461.pdf</Name>
  <JobName>Job - 04/07/2021 16:18:51</JobName>
- <DeviceSettings>
  <DeviceName>KSS52191003</DeviceName>
  <IPAddress/>
```

- The XML file will have the same name as the output document

Name	Date modified
 WO-256461.pdf	4/7/2021 4:19 PM
 WO-256461.xml	4/7/2021 4:19 PM

Device Settings

- Local Access Password
- Network Destination Credentials
- Network Information
- Automatic Configuration Schedule
- Volume (SS500 only)
- Configuration Options

Select the items below that you want to restrict access to or enable:

- Enable restricted mode (users cannot select or change destinations)
- Allow SharePoint index field changes
- Log all transactions
- Background processing
- Run the Setup Wizard at next restart
- Enable output metadata
- Allow email selection in Jobs mode
- DocuShare compatible XML

Detailed Install Instructions for SS730EX Plus

March 2021 Release

Scan Station devices support upgrade to a new embedded release (KSSUpdate.exe) by following one of the five supported methods mentioned in the Admin guide.

However, to update an SS730EX Plus scan station device to embedded release 01.05.58.00 and above, an accessory package needs to be installed to support TLS 1.2 protocol, as a pre-requisite. So, follow the given steps to install accessory package **VC2019_Install_Accessory.exe** and update Scan station device to embedded release package 01.05.58.00 and above. This accessory package will install Microsoft VC redistributable 2019.

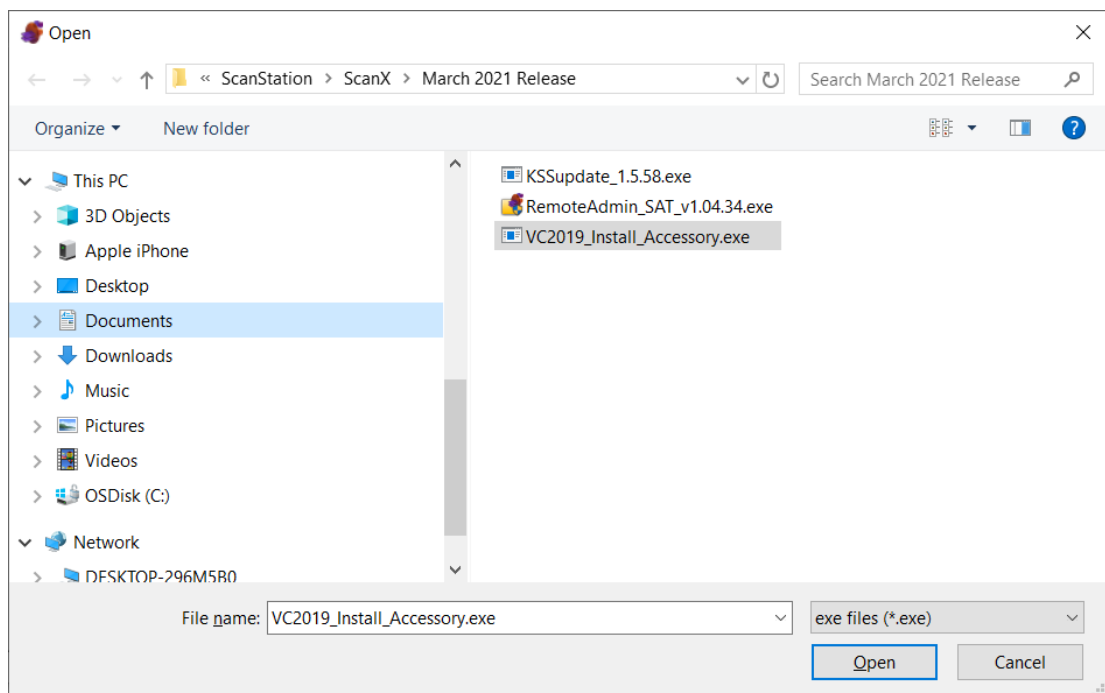
A) Steps to install pre-requisite Accessory package patch

VC2019 Install Accessory.exe using Scanner Administrator application

1. Ensure Scanner Administrator application (SAT) version 01.04.34 and above is installed.
2. From the Scanners tab, select the Scan Station(s) from the grid view that you want to update to latest release 01.05.58 and above.

NOTE: To select more than one Scan Station, use the Ctrl or Shift key and click the mouse button. The selected Scan Stations will be highlighted.

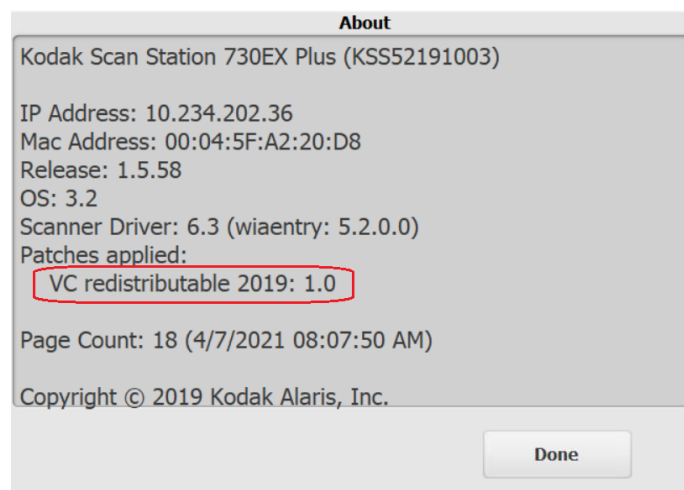
3. Select Scanner menu → Upload Firmware. The Open dialog box will be displayed as below.



4. Browse and Select the file accessory package “VC2019_Install_Accessory.exe” that you want to upload and click Open.

Notes:

- 1) Only the “VC2019_Install_Accessory.exe” file will be uploaded to the Scan Station.
- 2) The message, “Uploading, Please wait” will be displayed while the file is being uploaded.
- 3) Once upload to SS device is completed, then on the SS application will install that accessory package. During that point SS device will show “Please wait while Software is being installed...” message dialog.
- 4) Once accessory package is installed, SS device will be rebooted automatically.
- 5) Once SS device is powered up, in the information dialog you will see patches applied section as in below screenshot.



- 6) For a selected scanner the release version of installed patch can be seen on the device details page which is launched by clicking on the “Details...”option from Scanner Menu → Device.

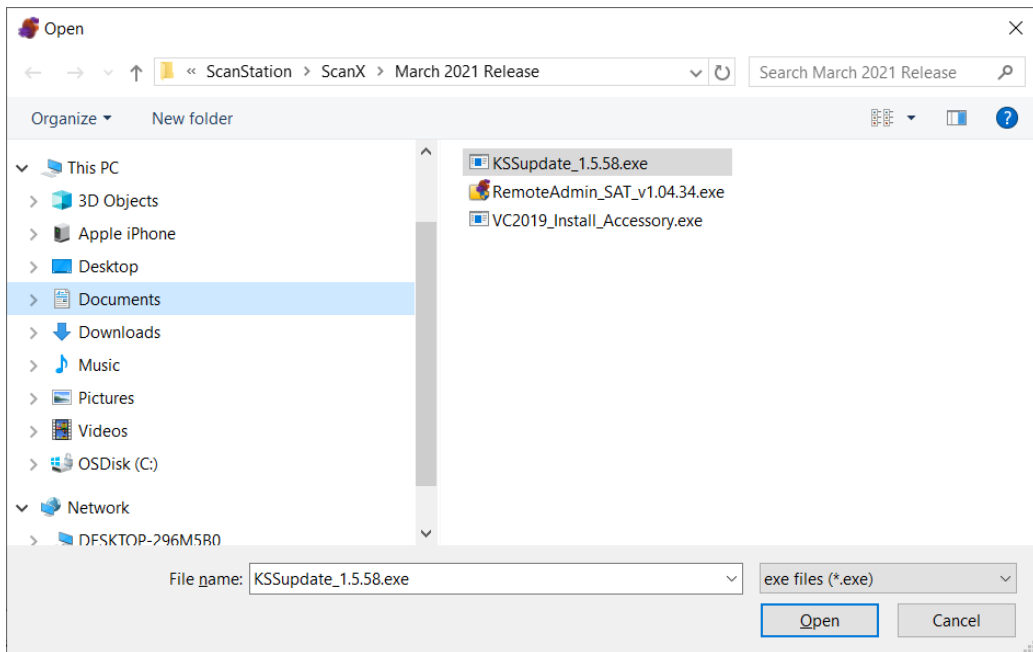
Now device is ready for upgrading latest embedded software using KSSUpdate_1.5.58.exe

B) Steps to update latest embedded software using KSSUpdate 1.5.58.exe from Scanner Administrator application:

1. Select the Scan Station(s) where you want to send new firmware.

NOTE: To select more than one Scan Station, use the Ctrl or Shift key and click the mouse button. The selected Scan Stations will be highlighted.

2. Select Scanner menu → Upload Firmware. The Open dialog box will be displayed.



3. Browse and Select the file “KSSUpdate_1.5.58.exe” that you want to upload and click Open.

NOTES:

- A. Only the KSSUpdate_1.5.58.exe file will be uploaded to the Scan Station.
- B. The message “Uploading, Please wait” will be displayed while the file is being uploaded.
- C. Once the upload file is succeeded then on SS device, Update software will get installed. During that point SS device will show “Please wait while Software is being installed...” message dialog.
- D. Once installation is completed then the device will be rebooted automatically.
- E. Once device is powered up, you can check the release version on the information dialog by clicking on the information icon of Embedded Application (SS).

Now embedded update is success and the SS730EX Plus device is ready to use embedded software.

For updating Firmware (KSSUpdate_1.5.58.exe) on the SS, any one method out of 5 methods mentioned in the scanner admin guide can be used only after installing the VC redistributable package.