

Release Notes

Smart Touch for KODAK E1000 Series Scanners

E1000 Version 1.9.8.1172

Purpose of Release: Support for KODAK re-branded E1000 Series Scanners. Please see “NOTES” below for important information on when a customer must upgrade to this latest release of Smart Touch. This release also resolves the problem where output to Google Drive stopped working.

Date: August 12, 2020

Required Scanner Software Versions:

Alaris E1000 CD Version 2.1.0

OR

KODAK E1000 CD Version 3.3.0 or higher

Required Scanner Firmware Versions:

Alaris E1000 Firmware Version 190201

OR

KODAK E1000 Firmware Version 200501

Supported Operating Systems:

- WINDOWS 7 SP1 (32-bit and 64-bit)
- WINDOWS 8.1 (32-bit and 64-bit)
- WINDOWS 10 (32-bit and 64-bit)
- WINDOWS 2012 R2 Server
- WINDOWS Server 2016 Std (64-bit)

Problem Reports Fixed:

1. **CPSOLSTS-690 – Can no longer output to Google Drive**
 - Google Drive output stopped working in Smart Touch versions 1.9.7 and earlier as Google changed the method by which to authenticate to Google Drive.
 - Smart Touch version 1.9.8 or later is now required to scan and output to Google Drive.
 - When upgrading from a previous version of Smart Touch, task shortcuts configured for Google Drive must be re-configured as the user must re-authenticate to their Google Drive.
2. **CPSOLSTS-684** - The Smart Touch name in the Windows Start Menu is **replaced by inappropriate text (e.g., “NewShortcut16” instead of “Smart Touch”)** when installing on a German Windows OS.

Known Issues:

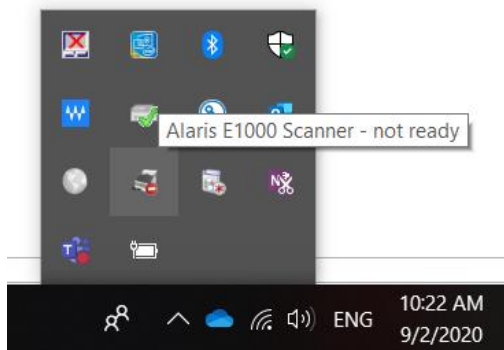
None

Release Notes

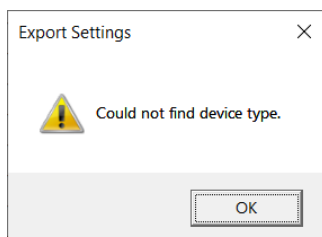
Smart Touch for KODAK E1000 Series Scanners

NOTES:

- Version 1.9.8 will support **both** the **Alaris** and **KODAK** E1000 scanners.
- **Existing Alaris E1000 Scanner customers** can stay at their current Smart Touch version if they don't update their driver installation to the KODAK-branded driver.
- If the **KODAK-branded driver is installed** on the PC, then the customer **must upgrade to or install Smart Touch Version 1.9.8**
 - If an E1025 or E1035 customer updates their Alaris driver installation to KODAK, but does not update their Smart Touch installation to Version 1.9.8, Smart Touch will not go “ready” and the user will see the following on their PC:



- When upgrading to Version 1.9.8 of Smart Touch, the **Smart Touch Export tool** must also be upgraded to the latest update on the web. If not, this error will be displayed

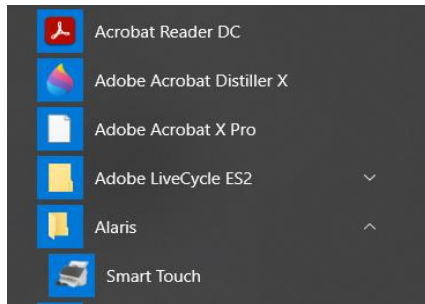


- Smart Touch button configurations (also known as Task Shortcuts) will not change or be impacted after upgrading to Version 1.9.8

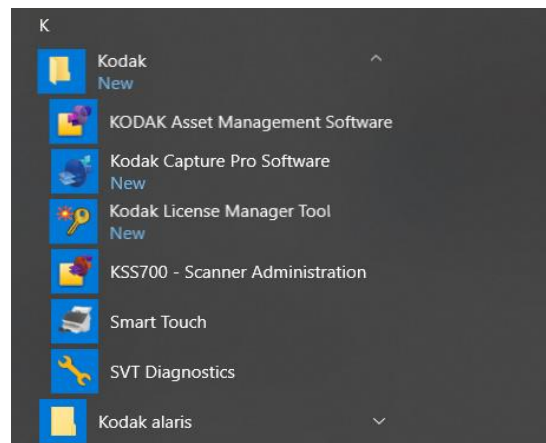
Release Notes

Smart Touch for KODAK E1000 Series Scanners

- After upgrading to Version 1.9.8 of Smart Touch, Smart Touch will be moved from the **Alaris** program group to the **Kodak** program group in the Windows Start Menu:



Before



After

Release Notes

Smart Touch for KODAK E1000 Series Scanners

E1000 Version 1.9.7.1049

Purpose of Release: This is a maintenance release for internet download of the SmartTouch application for the Alaris E1000 (E1025 and E1035) Scanners

Date: April 10, 2019

Required Scanner Software Versions:
E1000 CD Version 1.8.0 or higher

Required Scanner Firmware Versions:
E1000 Firmware Version 190201 or higher

Supported Operating Systems:

- WINDOWS 7 SP1 (32-bit and 64-bit)
- WINDOWS 8.1 (32-bit and 64-bit)
- WINDOWS 10 (32-bit and 64-bit)
- WINDOWS 2012 R2 Server
- WINDOWS Server 2016 Std (64-bit)

Problem Reports Fixed:

None

Known Issues:

None

NOTES:

- **New Installation or Upgrade:** User will be prompted to “Send usage data” or “Do not send usage data”. If the user consents during the installation or upgrade of SmartTouch, and the PC has internet access, usage data will be collected via Google Analytics.
- If the SmartTouch Import/Export tool is used to replicate SmartTouch settings across multiple PCs, and the option **All users share the same settings** is chosen, the SmartTouch settings will be stored in the following directory on the PC:

C:\Users\Public\Documents\Smart Touch\e1000

Release Notes

Smart Touch for KODAK E1000 Series Scanners

E1000 Version 1.9.7.1025

Purpose of Release: This is the initial release of Smart Touch for the Alaris E1000 (E1025 and E1035) Scanners

Date: March 4, 2019

Required Scanner Software Versions:

E1000 CD Version 1.8.0 or higher

Required Scanner Firmware Versions:

E1000 Firmware Version 190201 or higher

Supported Operating Systems:

- WINDOWS 7 SP1 (32-bit and 64-bit)
- WINDOWS 8.1 (32-bit and 64-bit)
- WINDOWS 10 (32-bit and 64-bit)
- WINDOWS 2012 R2 Server
- WINDOWS Server 2016 Std (64-bit)

Problem Reports Fixed: The following problem reported by Smart Touch users on other Alaris scanner models has been fixed in the initial Smart Touch release for the E1000 Series Scanners:

1. **CPSOLSTS-413 – “Failed to format images”** error when scanning many documents and outputting all scanned images into one Searchable PDF file. The supported number of images that can be output to one Searchable PDF file, scanned at 200 DPI Black & White, Grayscale, or Color, has been increased to **500 images** (i.e., 250 physical pages scanned in duplex mode or 500 physical pages scanned in simplex mode).

Known Issues:

None