

Scanning Using the Scan Validation Tool (SVT)

Contents

- 1. **Scanning Using the Scan Validation Tool (SVT) with the TWAINDSM Driver2**
 - Connect to the Scanner Using the TWAINDSM Driver 2
 - Update Configuration Settings.....3
 - Start Scanning 5
- 2. **Scanning Using the Scan Validation Tool (SVT) with the ISIS Driver6**
 - Connect to the Scanner Using the ISIS Driver6
 - Update Configuration Settings..... 7
 - Start Scanning 9

Scanning Using the Scan Validation Tool (SVT) with the TWAINDSM Driver

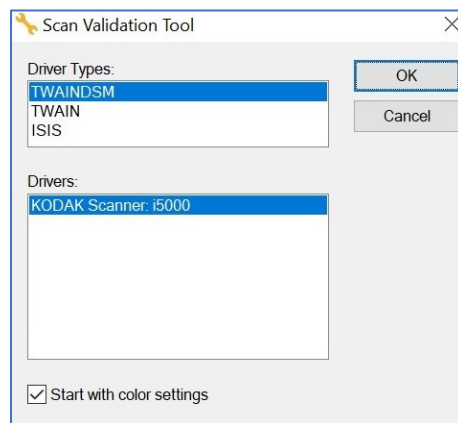
[Connect to the Scanner Using the TWAINDSM Driver](#)

[Update Configuration Settings](#)

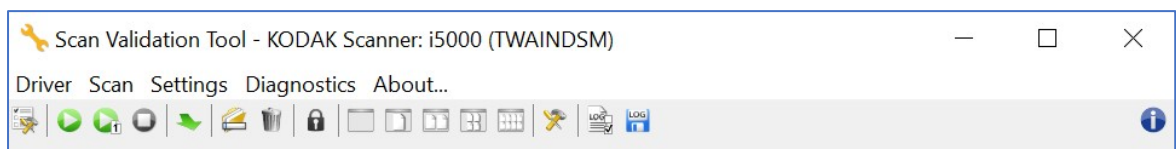
[Start Scanning](#)

Connect to the Scanner Using the TWAINDSM Driver

1. Check that the Scanners USB cord is connected to the computer
2. Power the scanner on
3. Open the **SVT Diagnostics Application**
4. The **Scan Validation Tool** window will open
 - a. Select **TWAINDSM** from the Driver Types
 - b. Select your Scanner model from the list of Drivers
 - c. Click **OK**



5. The Scan Validation Tool screen appears



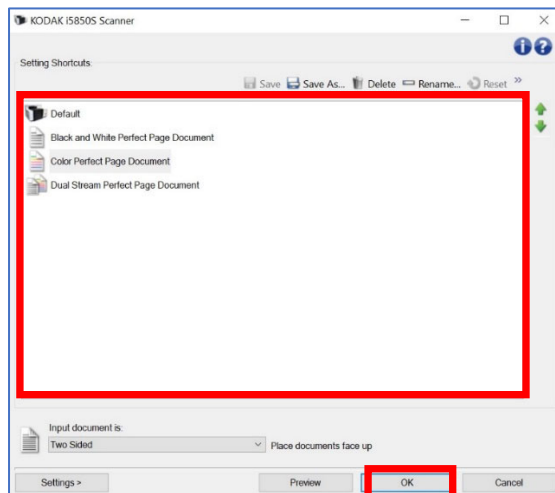
**To start scanning with the default preset configurations skip to [Start Scanning](#)*

Update Configuration Settings

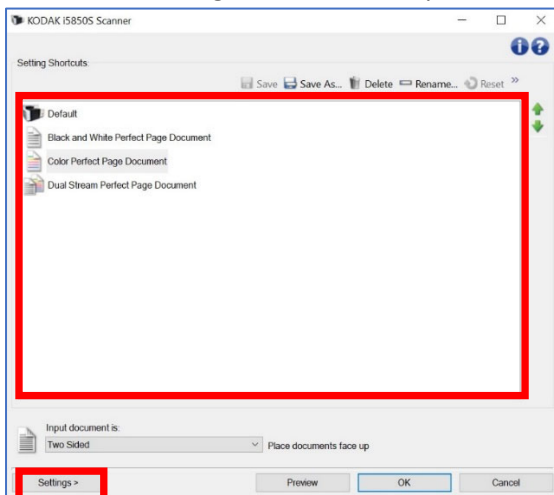
3. At the Scan Validation Tool screen, click **Setup**



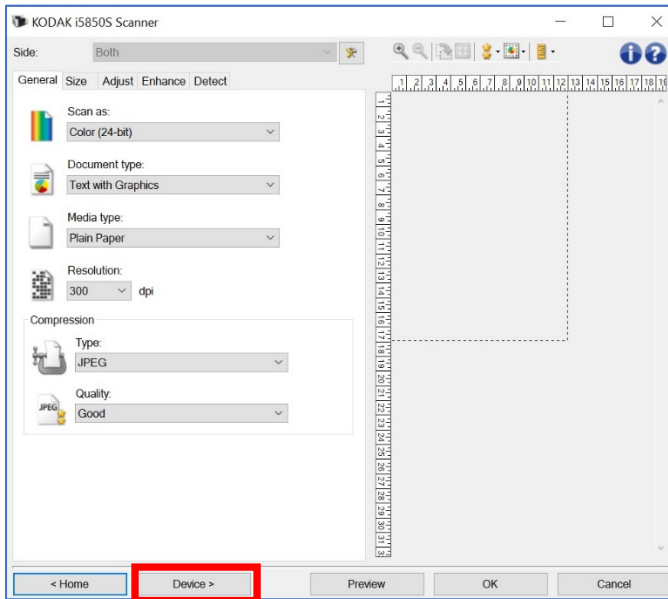
4. Select one of the four Preset Configurations to use, click OK. To customize image and/or scanner properties, continue to Step 3. **To start scanning with one of the preset configurations skip to [Start Scanning](#).*



5. To customize Image and Device Properties, select **default** and click **Settings**.

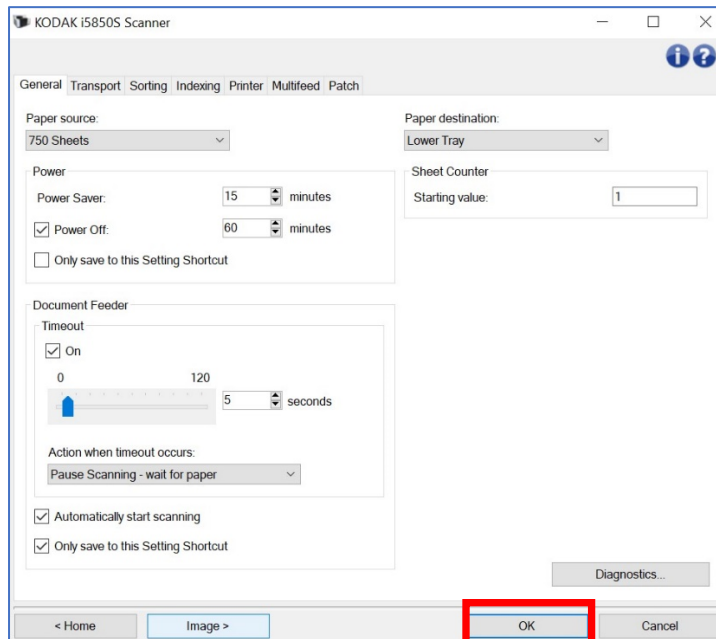


6. On the **Image Settings** screen, changes may be made to the settings found in the five tabs. When complete, click **Device**.



7. On the **Device (Scanner Properties)** screen, changes may be made to any of the settings in the seven tabs. When all changes are complete, click **OK** and skip to [Start Scanning](#).

Note: Some tabs and settings may not be available on all scanner models.

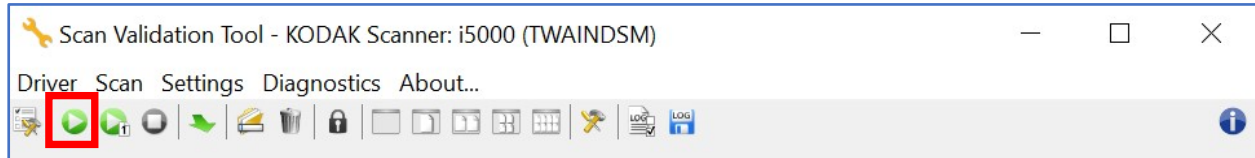


Start Scanning

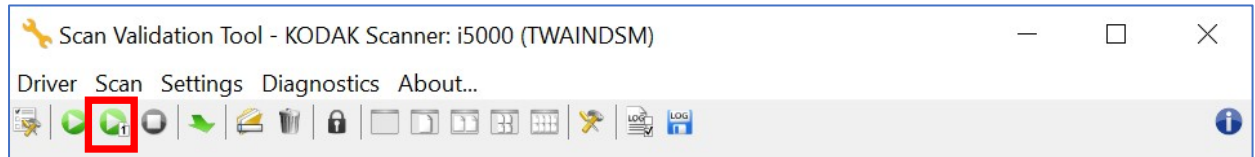
Place the documents face down in the input tray

From the **Scanning Validation Tool**:

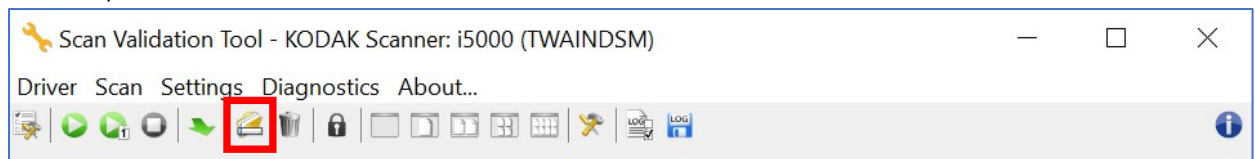
Select **Start Scanning** (multiple pages) to scan multiple pages



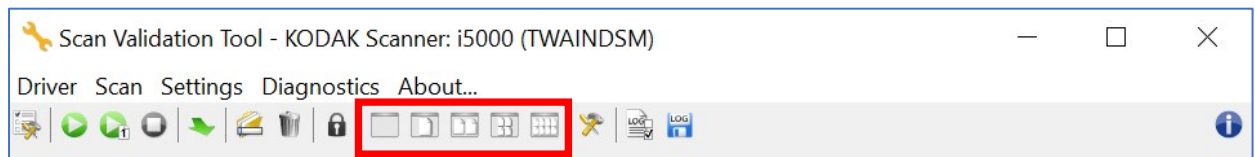
To scan only one page, select **Scan One Page**



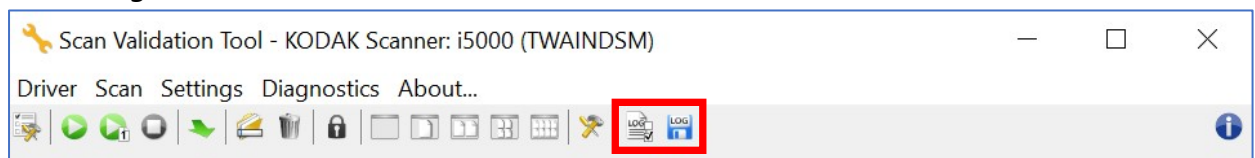
To change the directory, file name format, and/or file type for saving image files, select **Destination**



To change the image display mode, click on one of the options. Select (from left to right) **No, One, Two, Four, Eight**



To obtain scanner diagnostic logs, select (from left to right) **Configure Log, Create Log**



Scanning Using the Scan Validation Tool (SVT) with the ISIS Driver

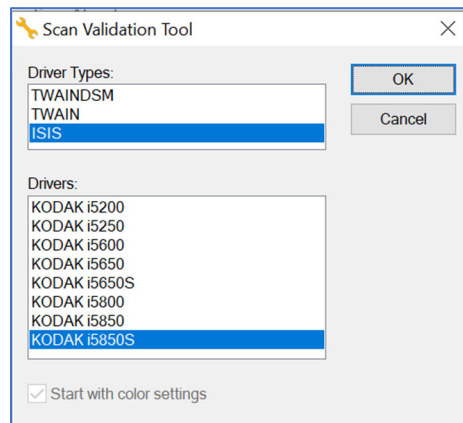
[Connect to the Scanner Using the ISIS Driver](#)

[Update Configuration Settings](#)

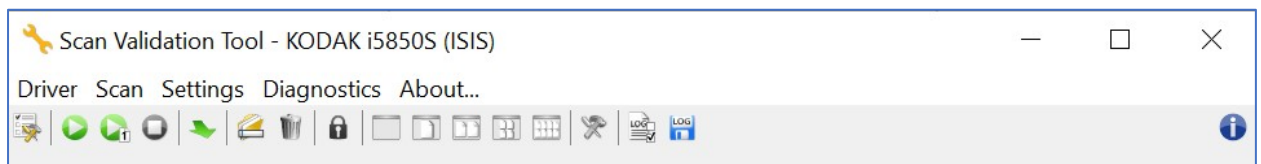
[Start Scanning](#)

Connect to the Scanner Using the ISIS Driver

1. Check that the Scanners USB cord is connected to the computer
2. Power the scanner on
3. Open the **SVT Diagnostics Application**
4. The **Scan Validation Tool** window will open
 - a. Select **ISIS** from the Driver Types
 - b. Select your Scanner model from the list of Drivers
 - c. Click **OK**



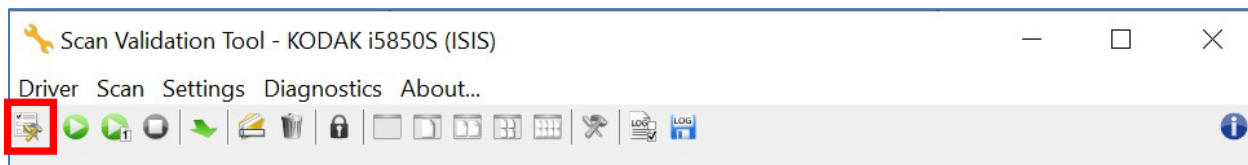
5. The Scan Validation Tool screen appears



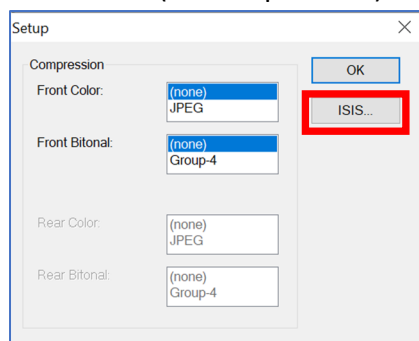
**To start scanning with the default preset configurations skip to [Start Scanning](#)*

Update Configuration Settings

1. At the Scan Validation Tool screen, click **Setup**

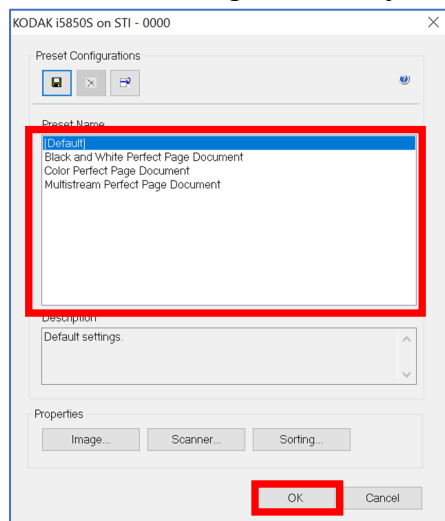


2. On the **Setup** screen you have the option to apply file compression to scanned images for **Front Color** (jpg) or **Rear Bitonal** (Group-4). For demonstration purposes, we will use the default (no compression) and click **ISIS**.



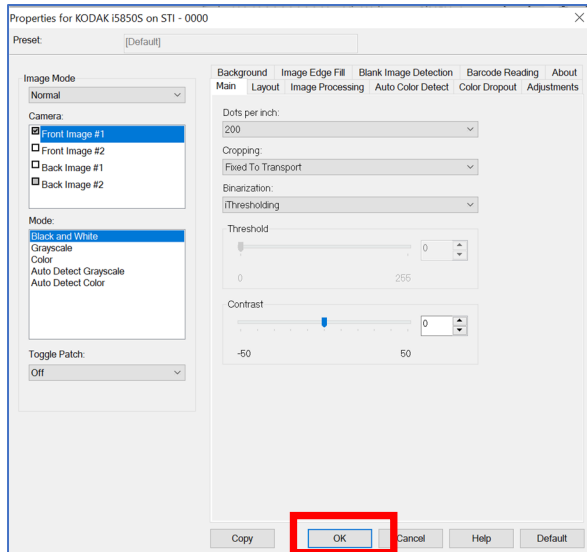
3. Select one of the four Preset Configurations to use, click **OK**. To customize image and/or scanner properties, continue to Step 4.

**To start scanning with one of the preset configurations skip to [Start Scanning](#)*

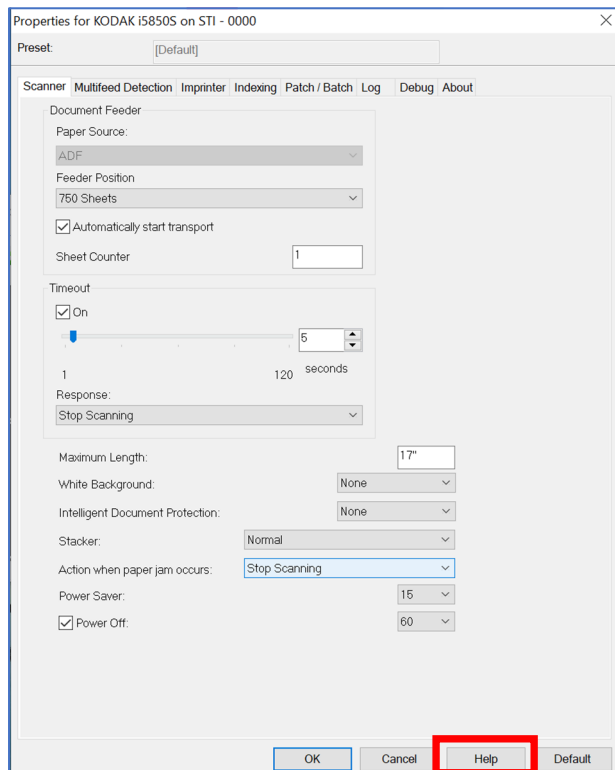


4. To customize Image Properties, click **Image** from the Preset Configurations screen.

5. On the **Image Properties** screen, image settings may be modified for each of the 10 image categories (tabs) in the right pane. For more Image Properties Settings, click **Help**. When all changes are complete, click **OK**.



6. To customize Scanner Properties, click **Scanner** from the Preset Configurations screen.
7. On the **Scanner Properties** screen, changes may be made to the settings found in the tabs at the top of the screen. For more Scanner Properties settings, click **Help**. When all changes are complete, click **OK** and skip to [Start Scanning](#).

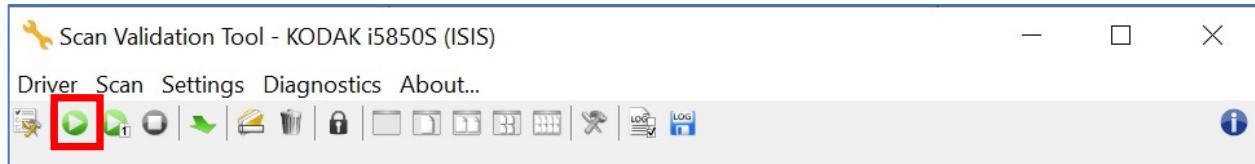


Start Scanning

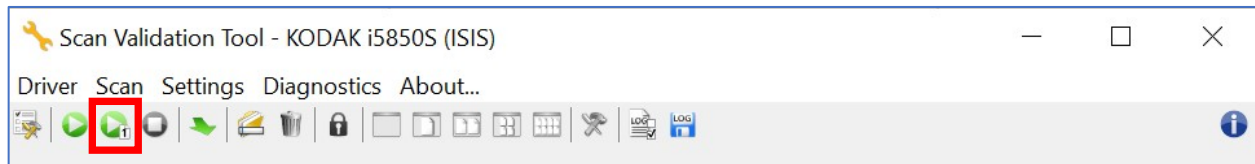
Place the documents face down in the input tray.

From the **Scan Validation Tool**:

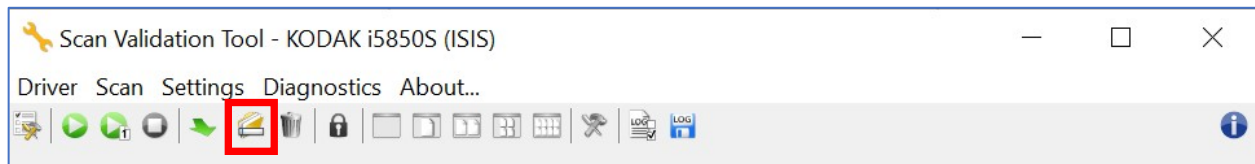
Select Start Scanning (multiple pages) to scan multiple pages



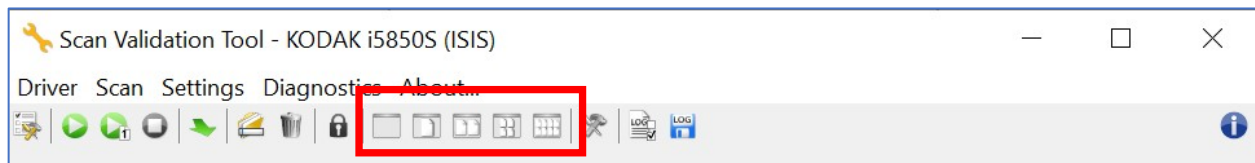
Select *Scan One Page* to scan a single page



To change the directory, file name format, and/or file type for saving image files, select *Destination*



To change the image display mode, click on one of the options. Select (from left to right) *No*, *One*, *Two*, *Four*, *Eight*



To obtain scanner diagnostic logs, select (from left to right) *Configure Log*, *Create Log*

