

Table of Contents

1. [Starting the SVT](#)
 2. [Scanning](#)
 3. [Setting Up the SVT](#)
 - 3.1. [Setting Up Presets](#)
 - 3.2. [Setting Up Image Settings](#)
 - 3.3. [Setting Up Scanner Settings](#)
 4. [Displaying the About Tab](#)
 5. [Accessing Help](#)
-
-

Starting the SVT

Check that:

The USB cord from the scanner is connected to the computer.

The scanner power is on.

Select either:

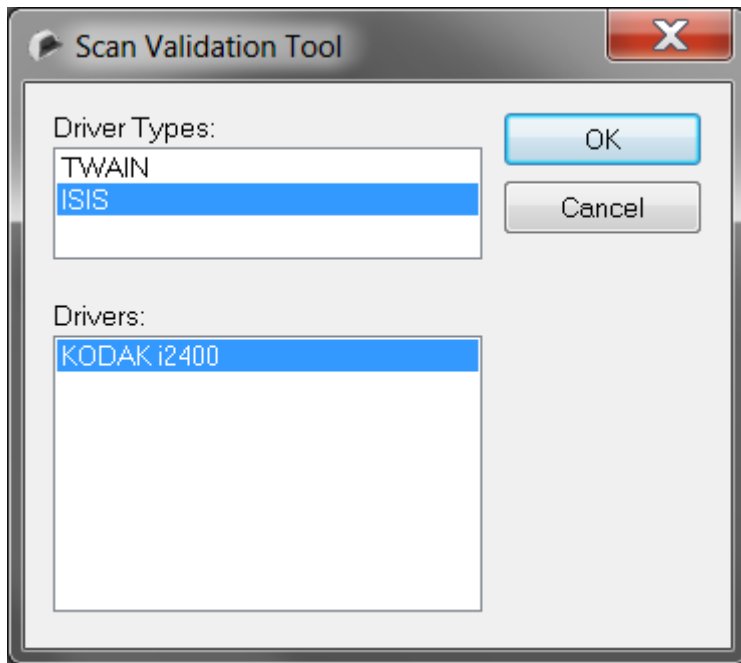
Start > Program Files (x86) > Kodak > Document Imaging > Scan Validation Tool for MICROSOFT WINDOWS 7

Start > Program Files > Kodak > Document Imaging > Scan Validation Tool for MICROSOFT WINDOWS XP

Under **Driver Types**, select **ISIS**.

Under **Drivers**, select your scanner model.

Click **OK**.



The scanning window appears.

Scanning

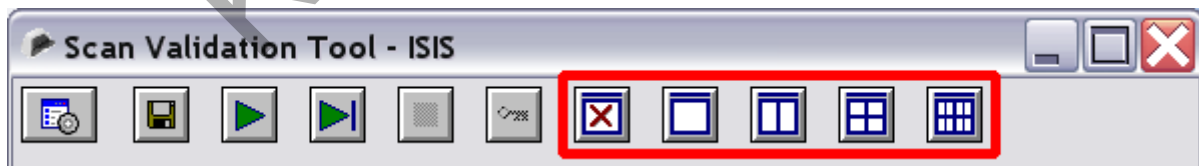
Place the documents face down in the input tray.

[Start the SVT.](#)

If desired, click one of the image display buttons to change the image display mode.

NOTE:

The first time the SVT runs, the scanning window appears in No Image Display Mode (no image display panes open). The options, from left to right, are No, One, Two, Four, or Eight Images Display Mode. When one of the image display mode buttons is clicked, the screen changes to include the selected number of image display panes.



If desired, click the Destination button to change the directory, file name format, and/or file type for saving image files.

NOTE:

By default, scanned images are:

Stored in the **C:\Twain\ISIS** folder

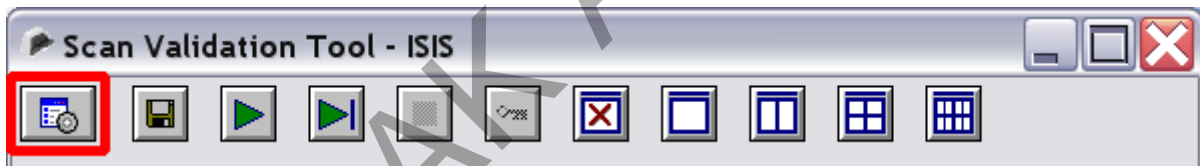
Named using the format **image0000001A.tif** and **image0000001B.tif**, where **A** is the front and **B** is the back of the document



Do you want to scan with the default preset configuration or other settings?

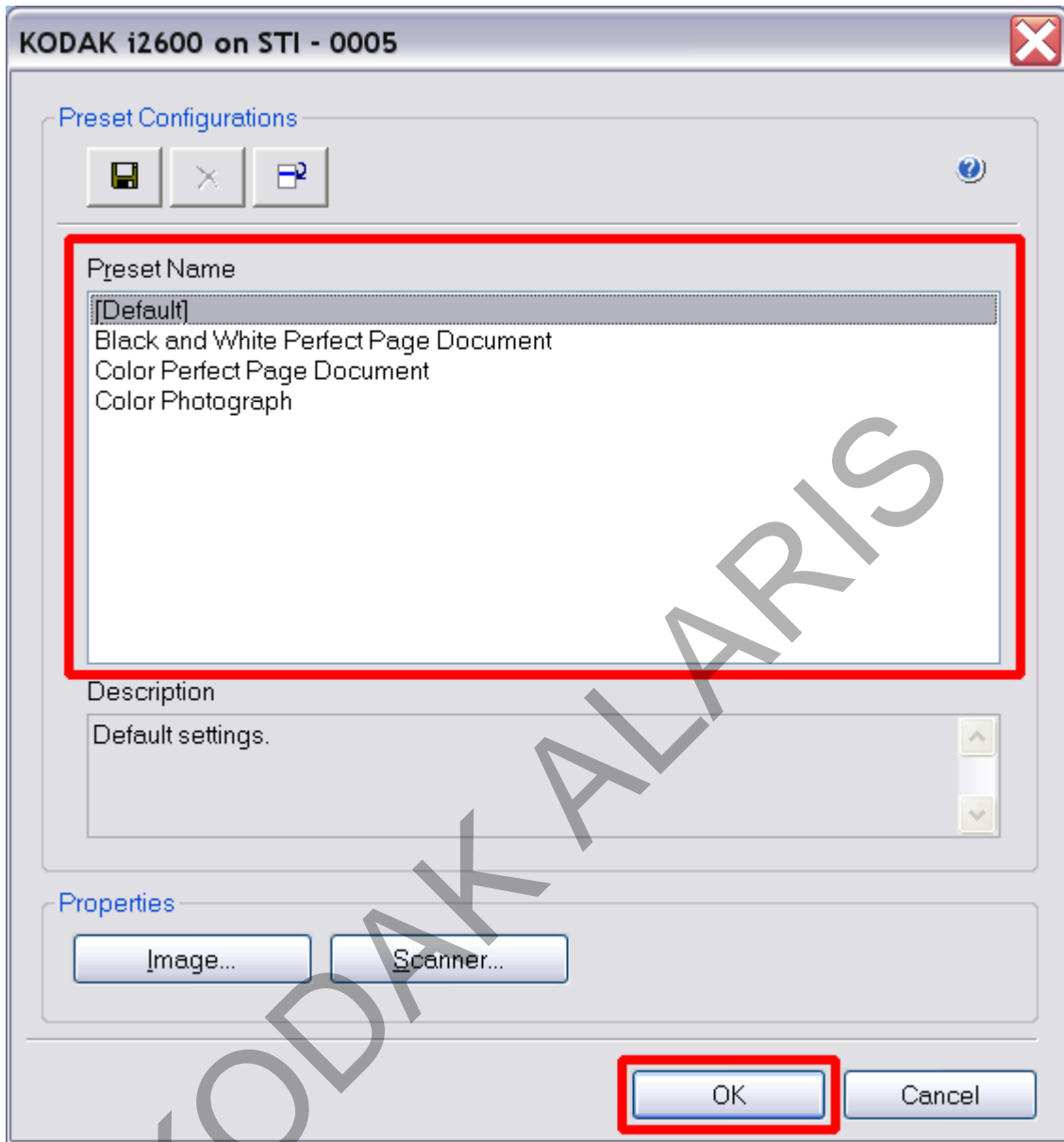
If	Then
Default preset configuration	Skip to Step 9 .
Other settings	Continue with the next step.

1. Click the Setup button.



The Presets window appears.

2. Select a preset.
3. Click **OK**.



The scanning window reappears.

4. Click the Start Scanning button or the Scan One Page button.



NOTE:

If you click the Stop button (red square), it causes a "soft stop," meaning that the scanner does not stop immediately. It allows the page that is currently being scanned to finish feeding through the scanner.

Setting Up the SVT

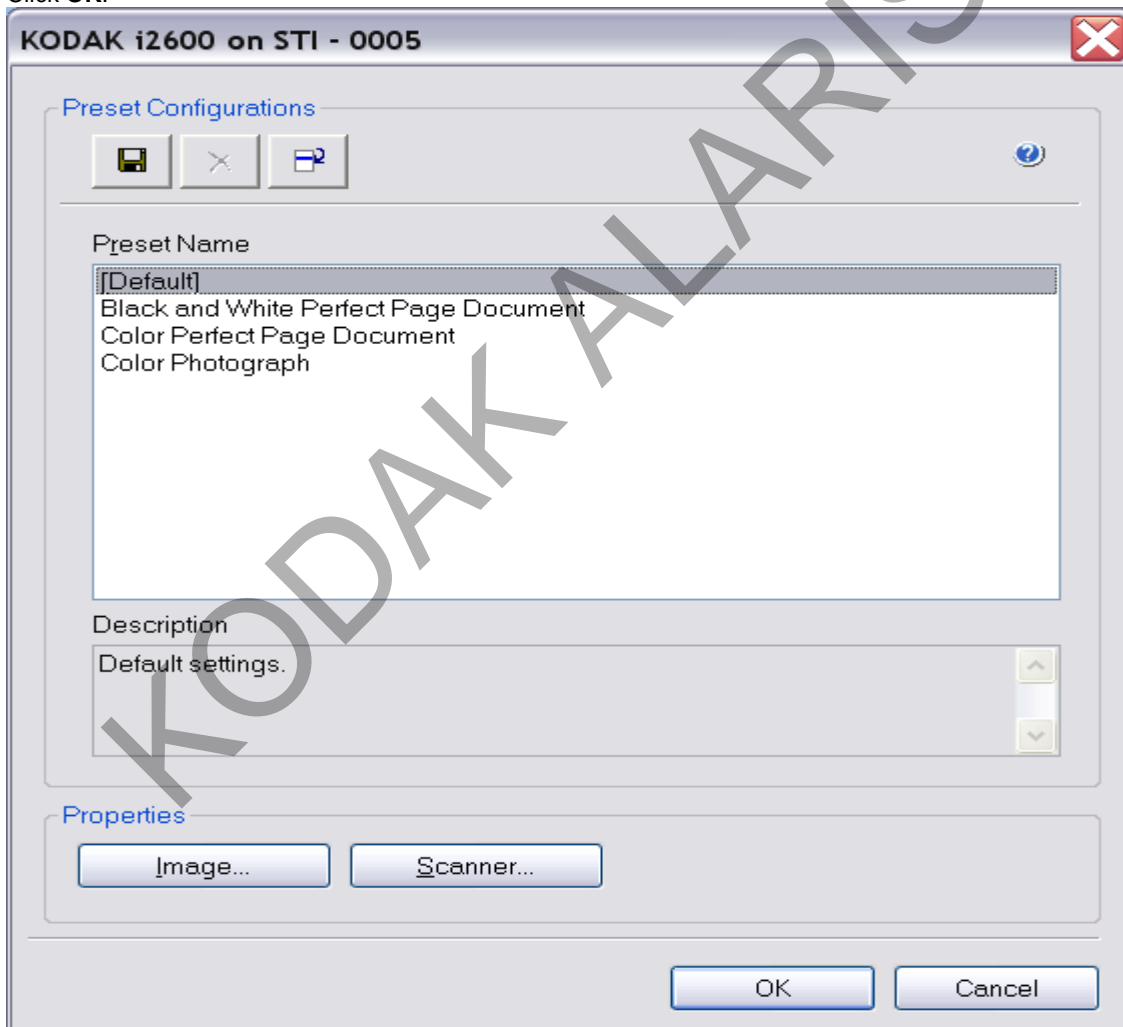
Setting Up Presets

1. [Start the SVT.](#)
2. Click the Setup button.



The Presets window appears. It includes predefined presets, which contain image and scanner settings that are commonly used for specific types of scanning jobs. Presets can be edited, added, and deleted.

3. Make any necessary changes. For more information, see the [Help](#).
4. Click **OK**.



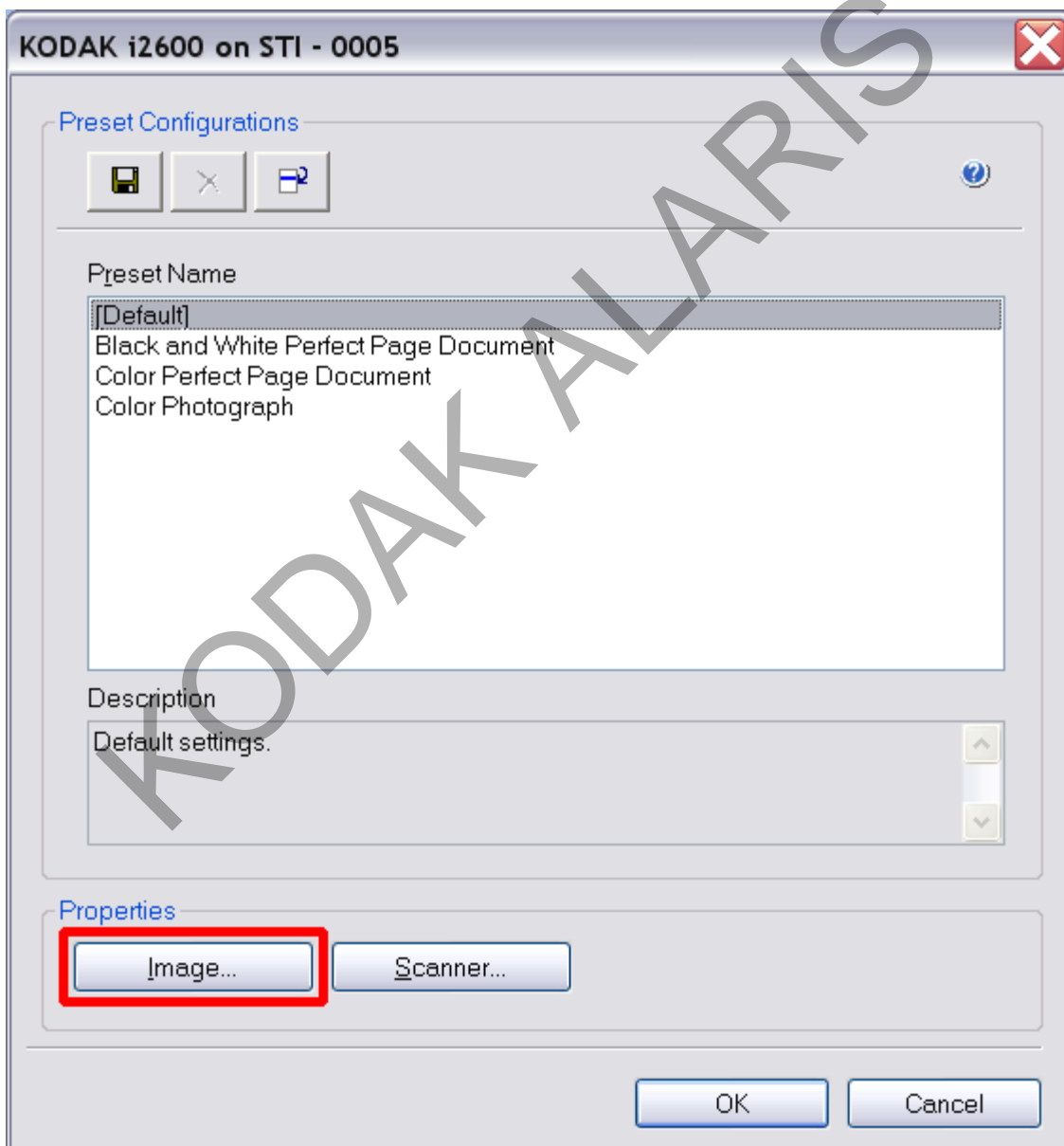
Setting Up Image Settings

1. [Start the SVT.](#)
2. Click the Setup button.



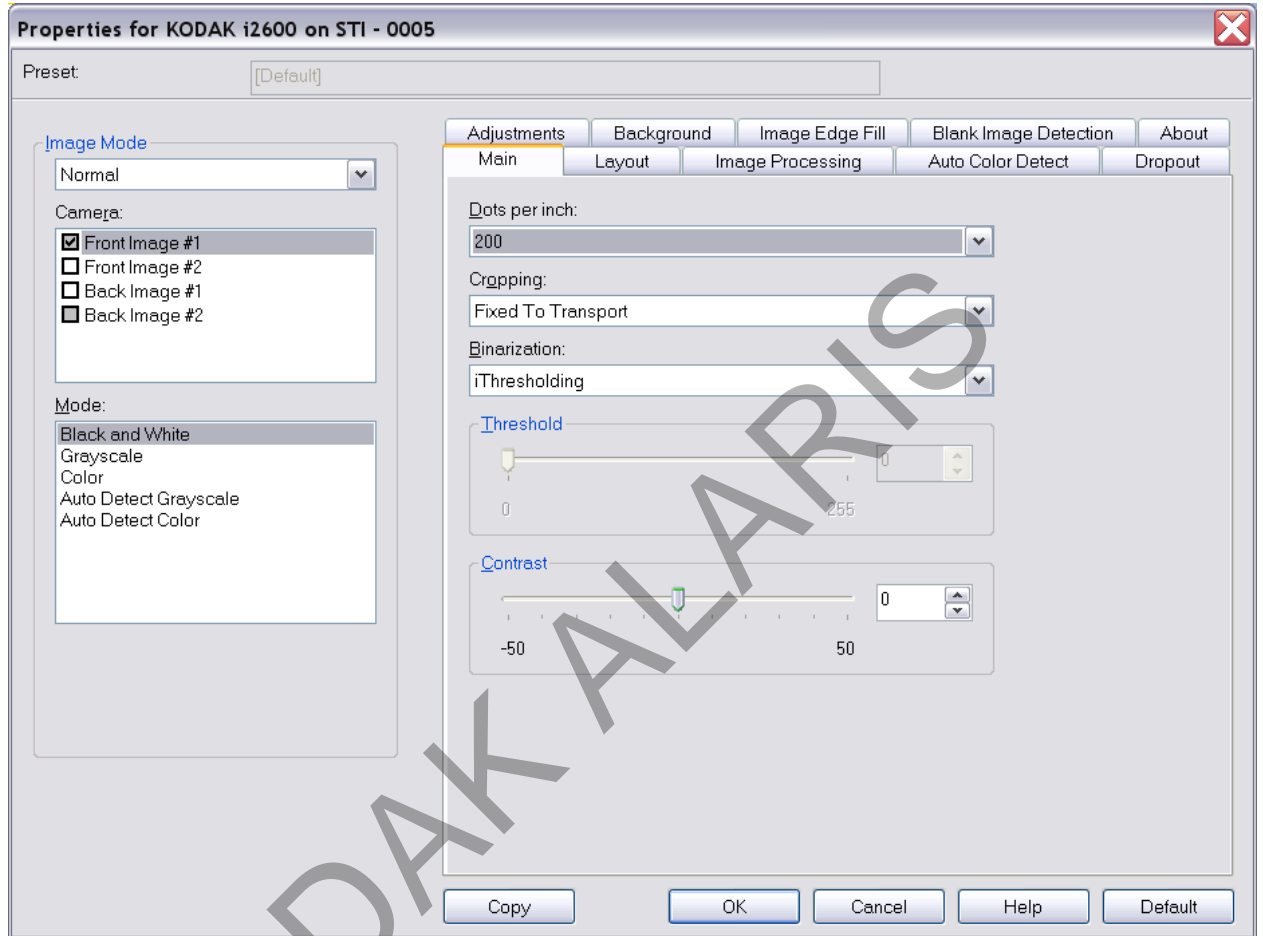
The Presets window appears.

3. Select the preset for which you want to set up image settings.
4. Click the **Image** button.



The Image Settings window appears. This window includes options for image processing.

5. Make any necessary changes. For more information, see the [Help](#).
6. Click **OK**.

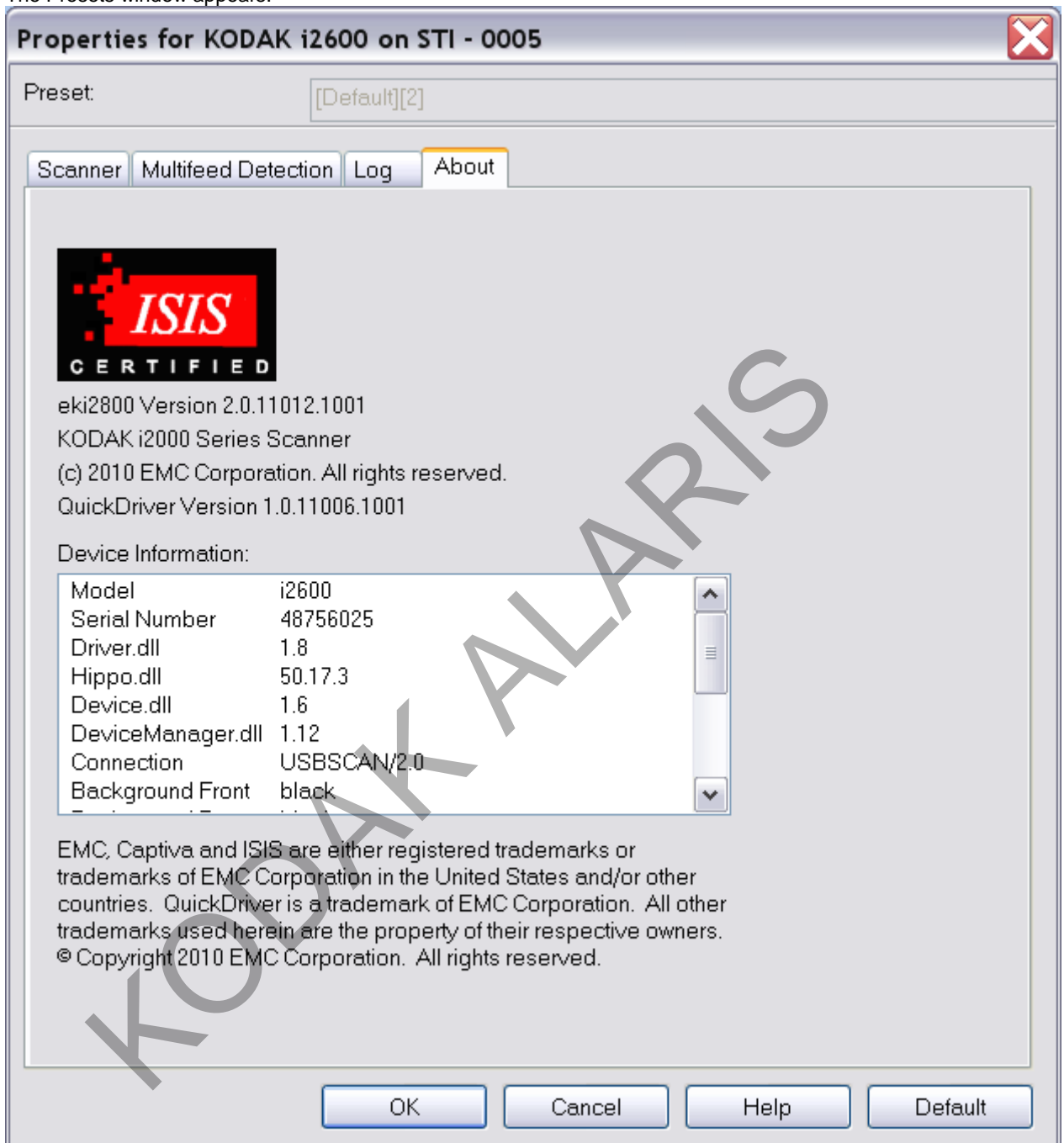


Setting Up Scanner Settings

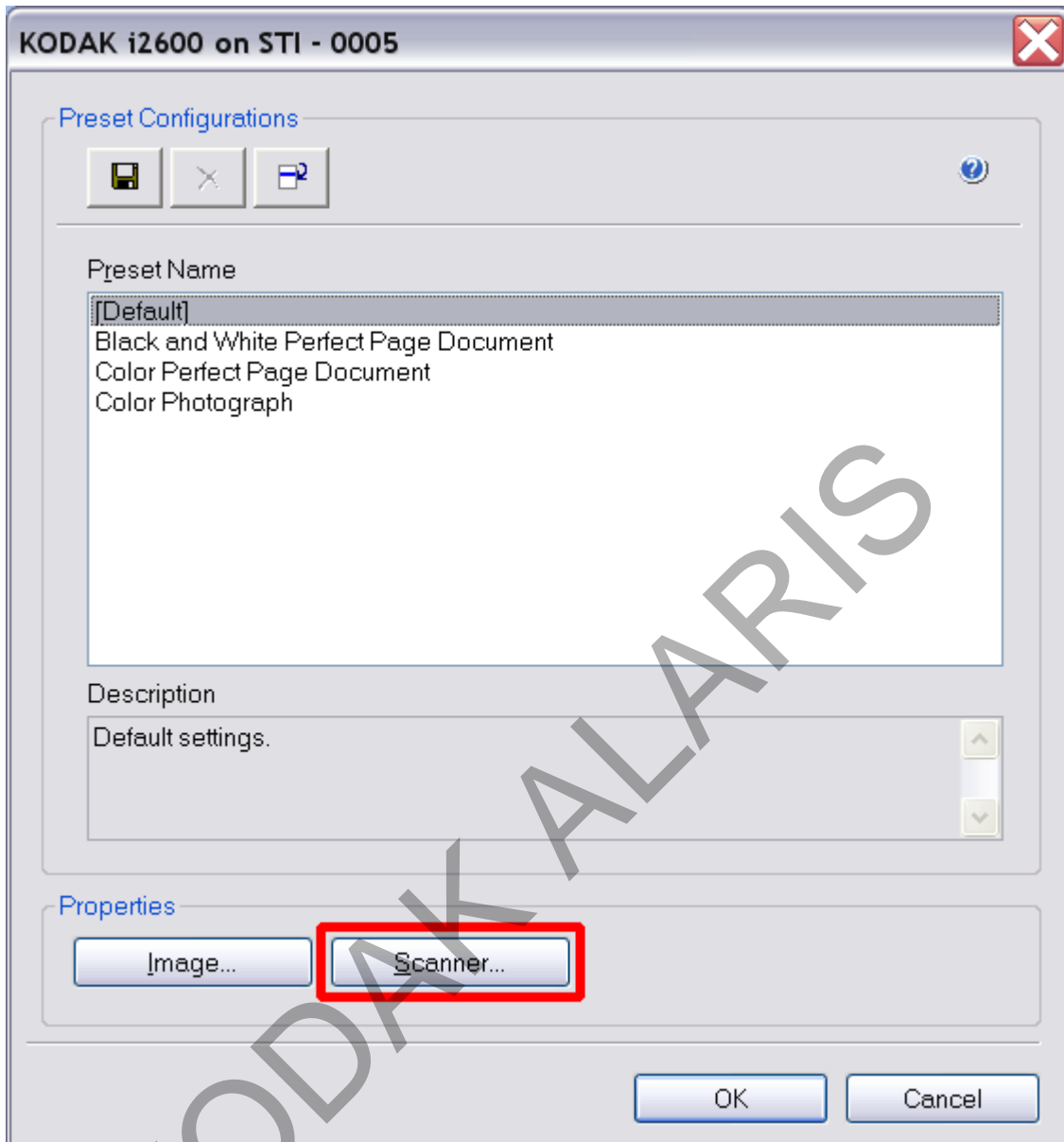
1. [Start the SVT.](#)
2. Click the Setup button.



The Presets window appears.

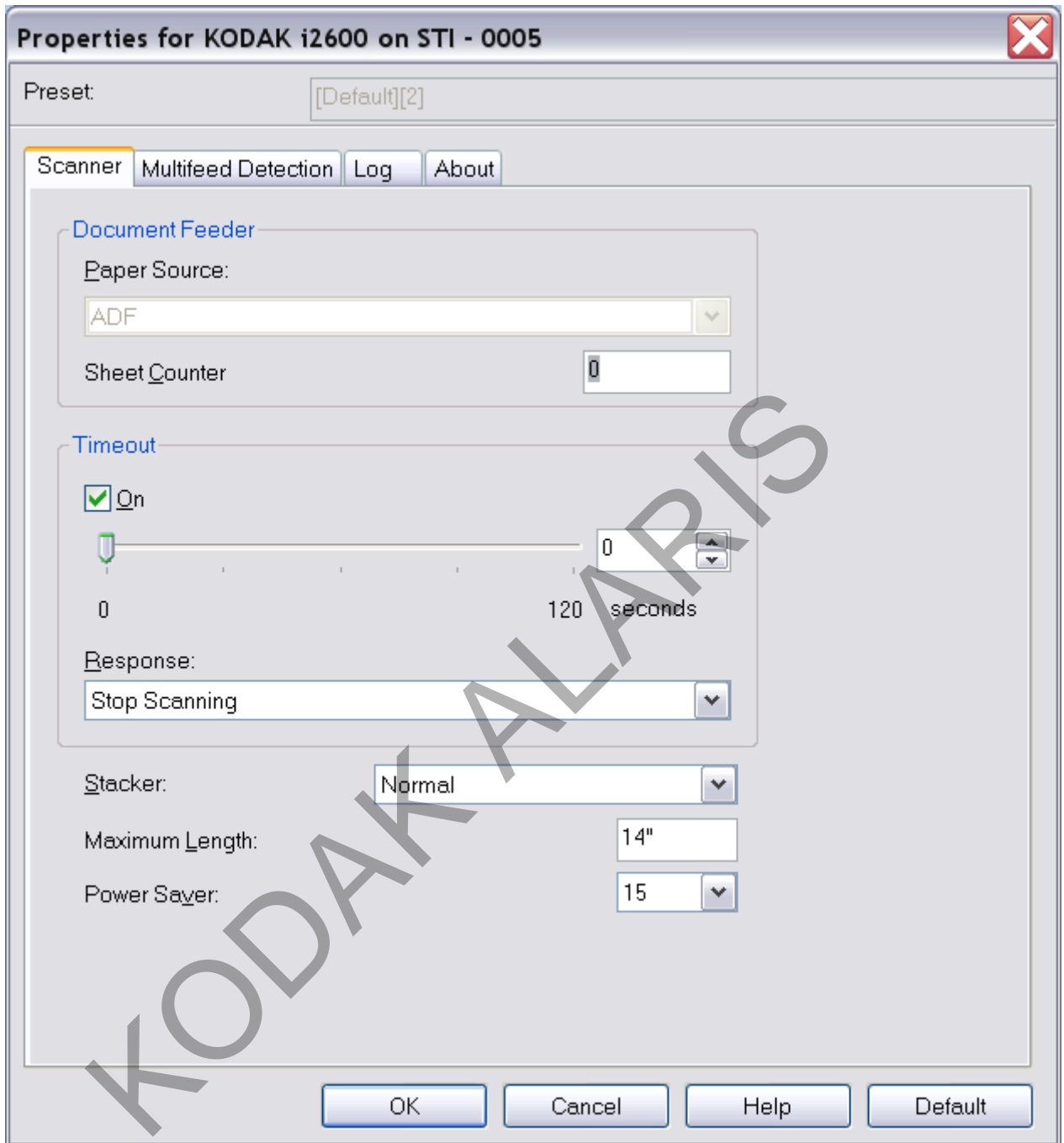


3. Select the preset for which you want to set up scanner settings.
4. Click the **Scanner** button.



The Scanner Settings window appears. This window includes device-specific options for scanner control.

5. Make any necessary changes. For more information, see the [Help](#).
6. Click **OK**.

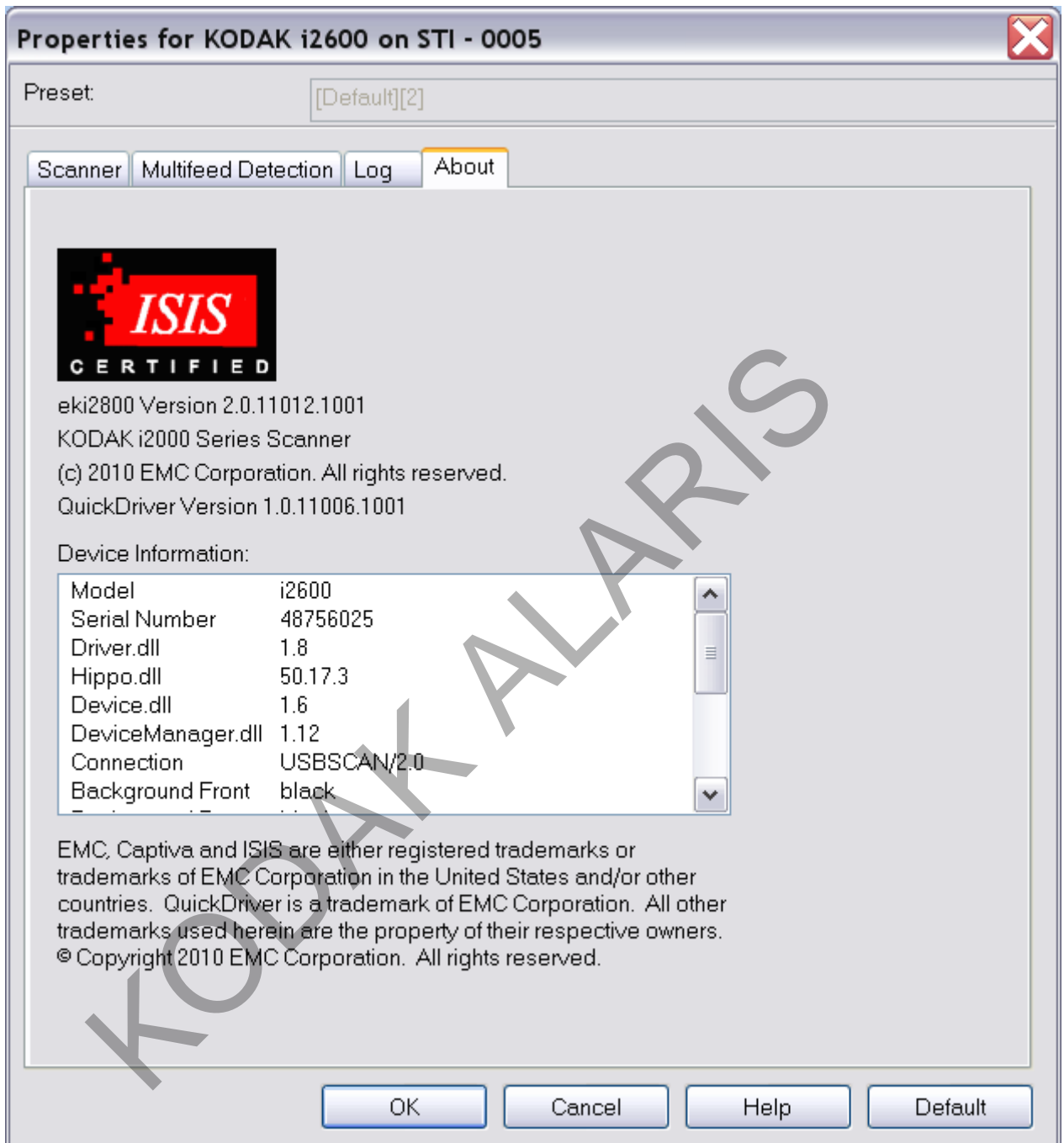


Displaying the About Tab

To display information about the scanner and driver:

1. [Start the SVT.](#)
2. Open the [Image Settings](#) or the [Scanner Settings](#) window.

3. Click the **About** tab.

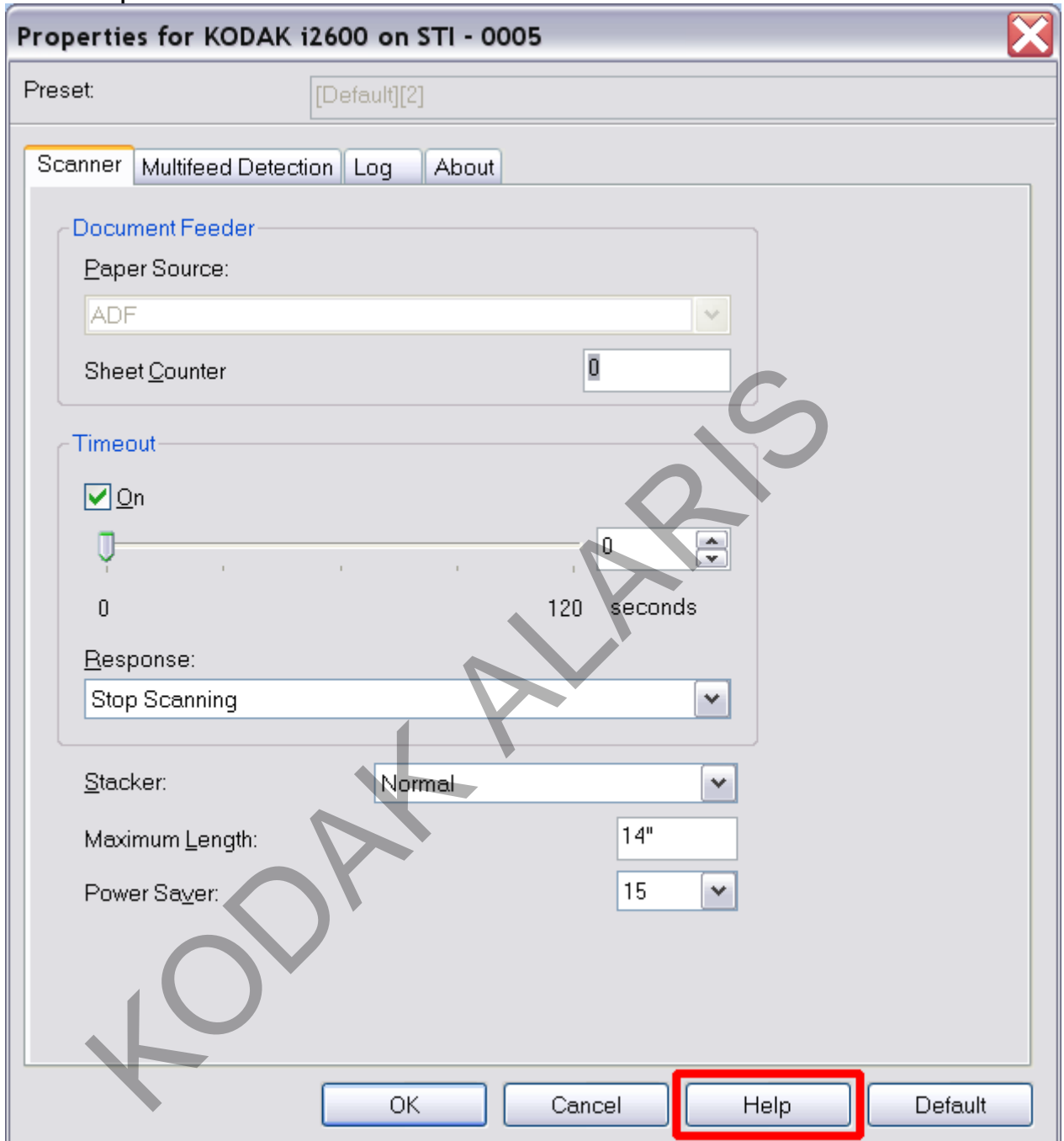


Accessing Help

For additional help with SVT functions:

1. [Start the SVT.](#)
2. Open the [Image Settings](#) or the [Scanner Settings](#) window.

3. Click the **Help** button.



A new Help window opens. On the right, it shows context-sensitive information about the SVT window that is currently open. On the left, you can navigate to or search for other information.

